

# New Orleans Municipal Yacht Harbor



moffatt & nichol

Creative People, Practical Solutions.®

601 Poydras St., Suite 1860  
New Orleans, LA, 70130  
504-648-3560

[moffattnichol.com](http://moffattnichol.com)

# NEW ORLEANS MUNICIPAL YACHT HARBOR

## NEW ORLEANS, LOUISIANA



VICINITY MAP  
SCALE: 1" = 1 MILE

INDEX OF DRAWINGS	
SHEET NO.	DRAWING TITLE
1	COVER SHEET & VICINITY MAP
2	EXISTING CONDITIONS AND DEMOLITION PLAN
3	MARINA SITE PLAN
4	DREDGING PLAN
5	DREDGING SECTIONS
6	ENLARGED MARINA SITE PLAN (1 OF 4)
7	ENLARGED MARINA SITE PLAN (2 OF 4)
8	ENLARGED MARINA SITE PLAN (3 OF 4)
9	ENLARGED MARINA SITE PLAN (4 OF 4)
10	PLATFORM A DETAILS
11	PLATFORM B DETAILS (1 OF 2)
12	PLATFORM B DETAILS (2 OF 2)
13	BULKHEAD DETAILS (1 OF 2)
14	BULKHEAD DETAILS (2 OF 2)
15	FLOATING DOCK DETAILS (1 OF 2)
16	FLOATING DOCK DETAILS (2 OF 2)
17	GANGWAY DETAILS



LOCATION MAP  
SCALE: 1" = 1 MILE



PERMITTING AGENCIES: U.S. ARMY CORPS OF  
ENGINEERS  
DEPARTMENT OF NATURAL  
RESOURCES  
CITY OF NEW ORLEANS

PURPOSE: CONSTRUCTION PERMIT

DATUM: NAVD88

COVER SHEET & VICINITY MAP

NEW ORLEANS MUNICIPAL  
YACHT HARBOR

PREPARED BY: MOFFATT & NICHOL

DATE: 07 NOV 2018

SHEET 1 OF 17

# Municipal Yacht Harbor: Introduction

The MYH was a 600 slip marina located on the south shore of Lake Pontchartrain in New Orleans, Louisiana. Hurricane Katrina caused severe damage to the MYH docks and associated facilities. Instead of making repairs to the existing facility, the City has determined that the existing dock and mooring infrastructure be demolished and replaced with a floating dock system to provide the greatest resiliency and sustainability.

The new harbor system being planned is a concrete floating dock system with wave attenuation designed to accommodate the needs of the regional boating community while meeting ADA access requirements.

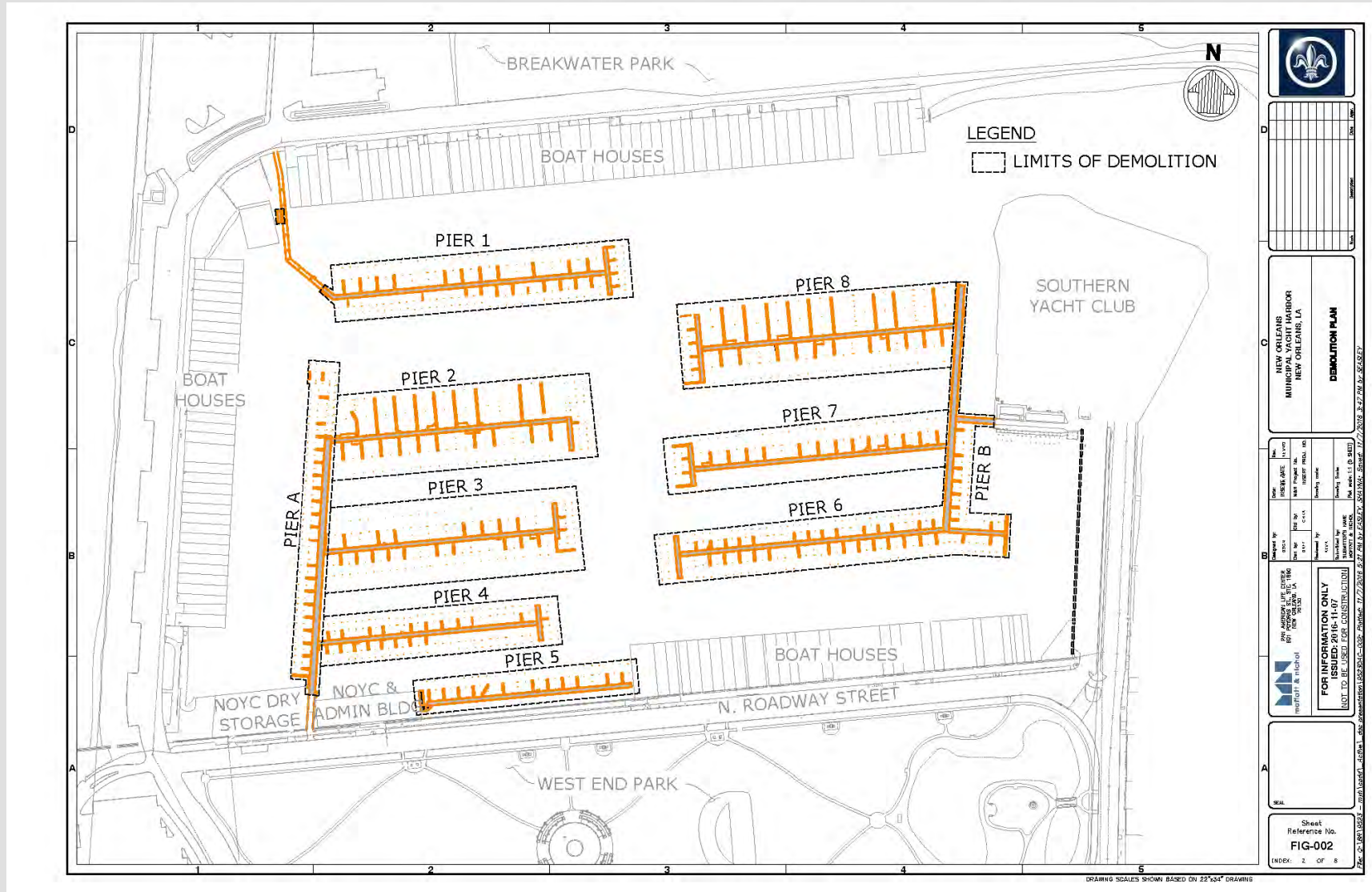
In addition to replacing the existing docks the project will also establish two new entry points for the marina, rehabilitate the eastern bulkhead and perform maintenance dredging.

# Project Features

- Remove Existing Docks
- Install new floating docks
- Construct West Marina Entry
- Construct East Marina Entry and Restroom
- Replace Bulkhead
- Maintenance Dredging
- Rehabilitate Pump Out Dock



# Project Features: Remove Existing Docks





# Existing Conditions: Entrances



Parking Lot Entrance



West Marina/ Park Entrance



# Existing Conditions: Docks

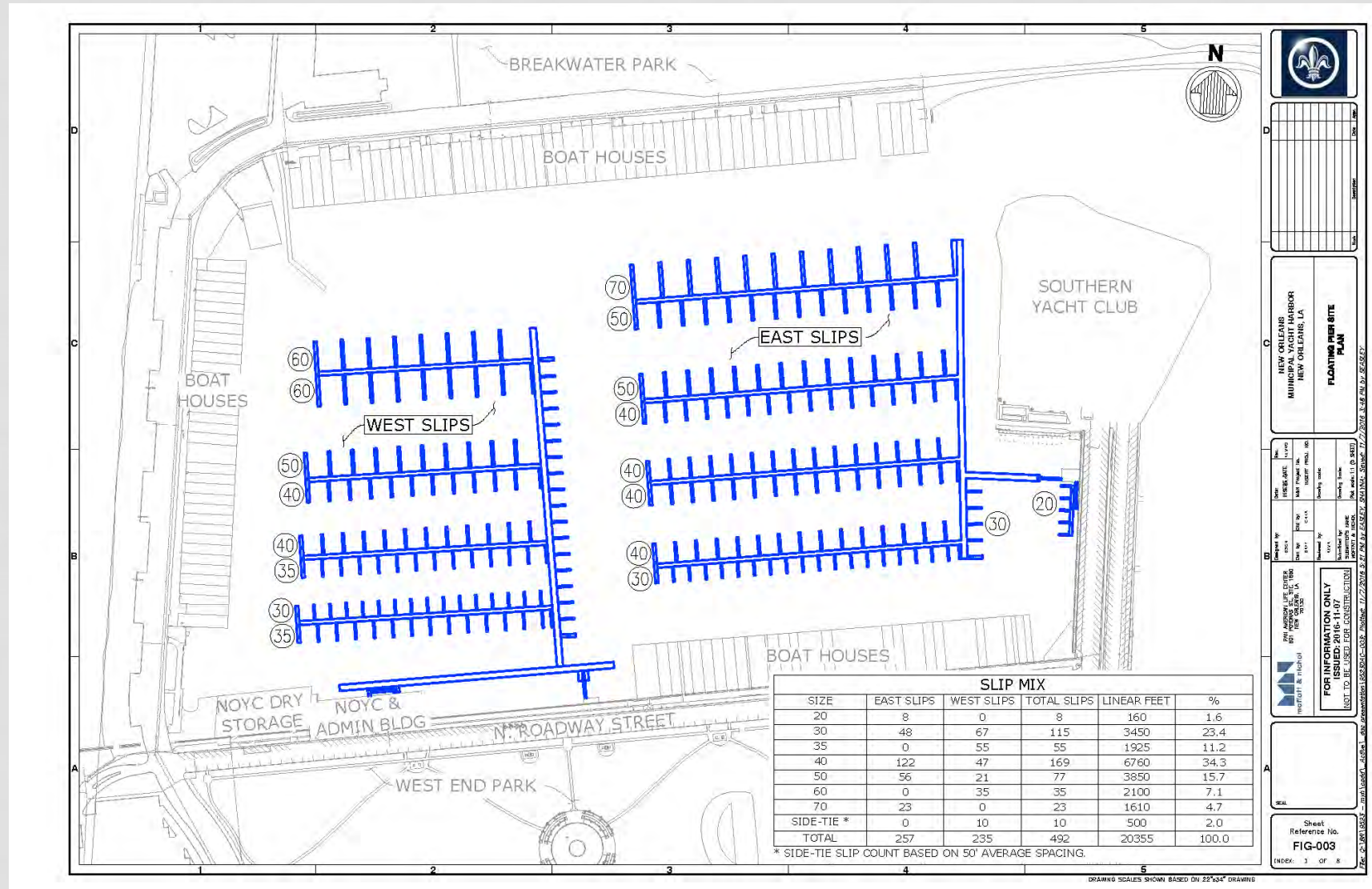


Docks



Pump-out Dock

# Project Features: Floating Docks – Master Plan





# Municipal Yacht Harbor: Master Plan





# Municipal Yacht Harbor: Master Plan

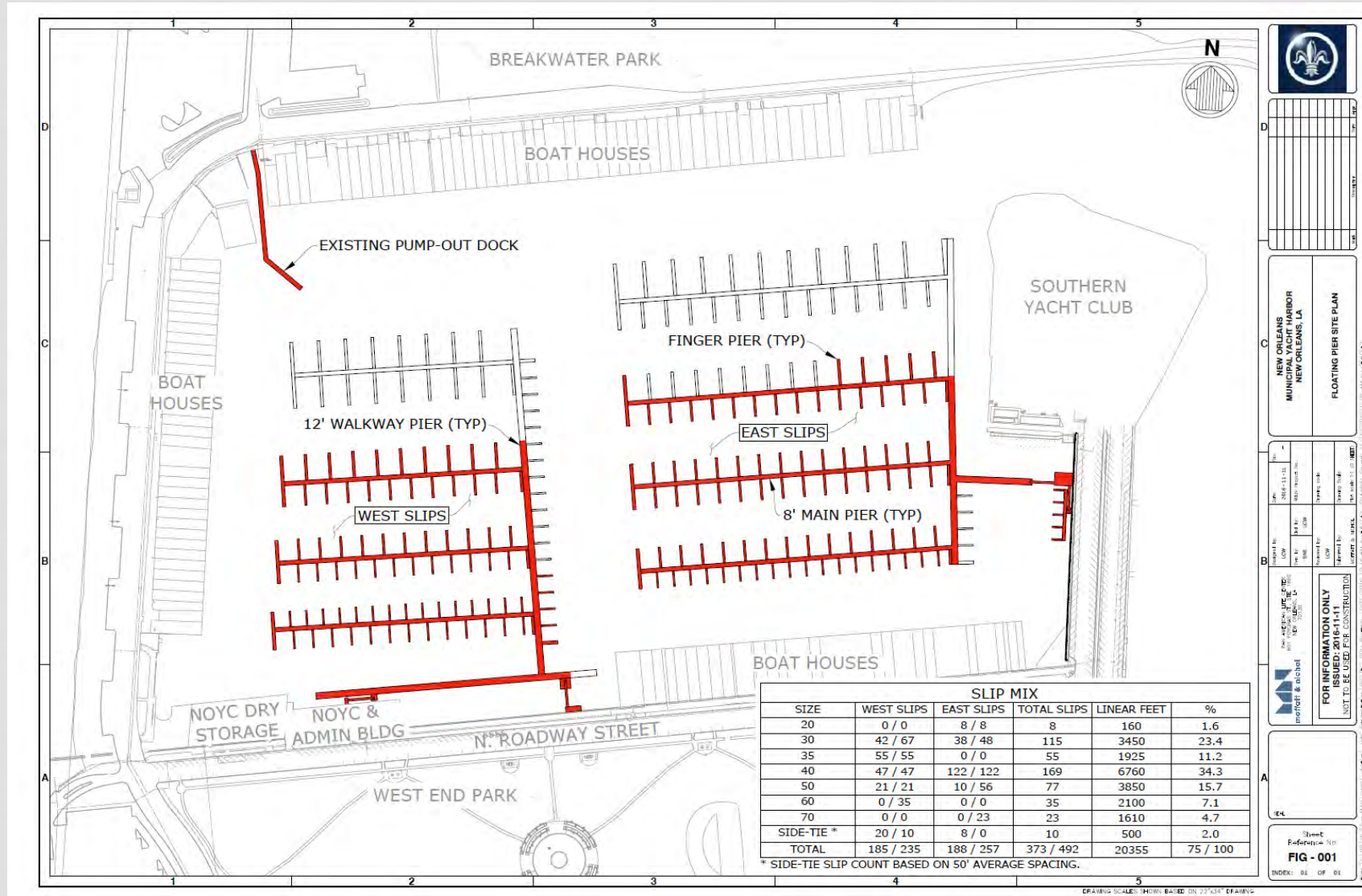




# Municipal Yacht Harbor: Master Plan

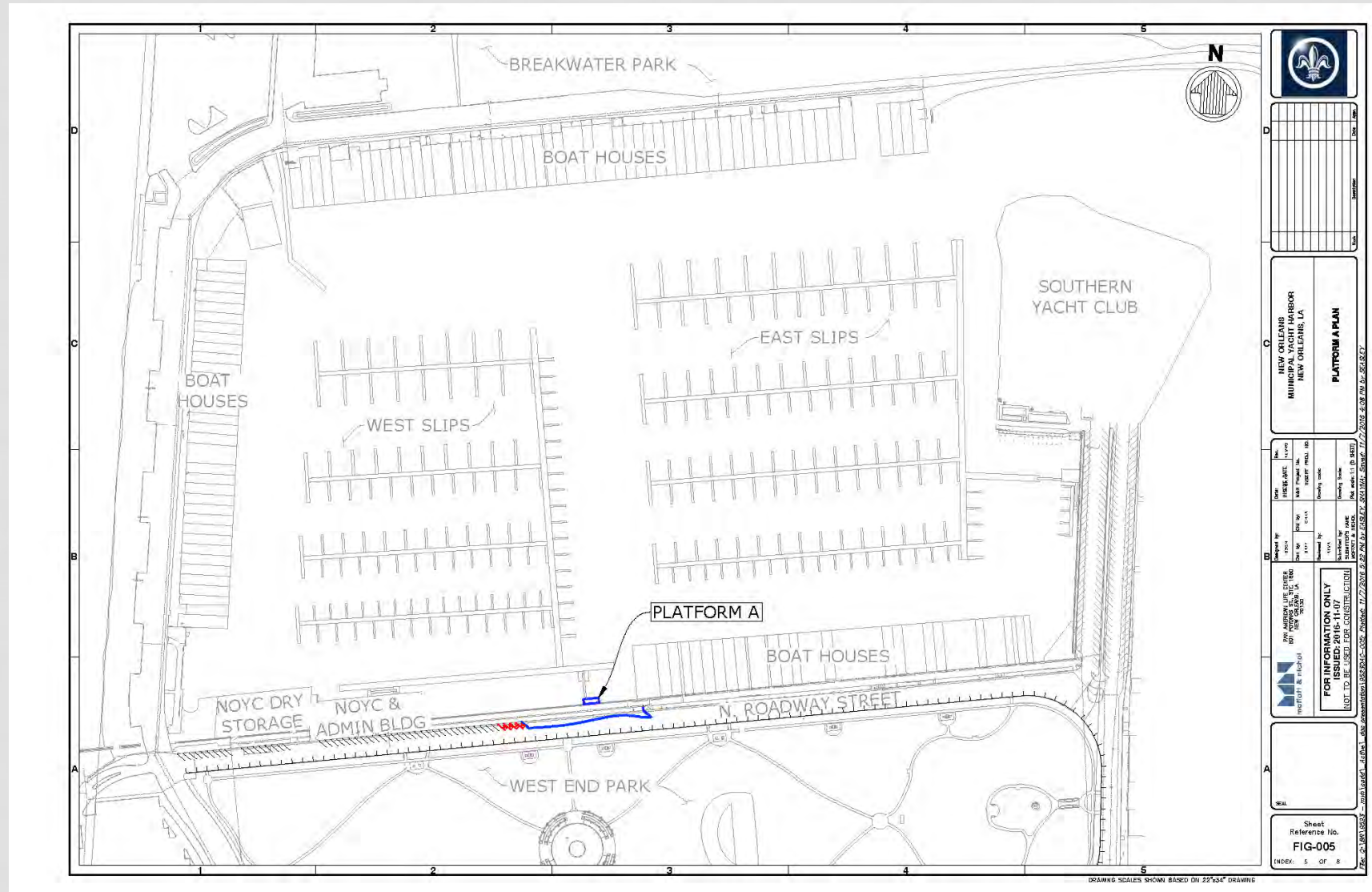


# Phase 1: Construction





# Phase 1: Construct West Marina Entry



# West Marina Entry: Existing





# West Marina Entry: Proposed



# Master Plan: West Marina Entry



WEST MARINA | PARK ENTRY



# Master Plan: West Marina Entry





# Master Plan: West Marina Entry





# Master Plan: West Marina Entry



# West Marina/Park Entrance

landscapeforms®

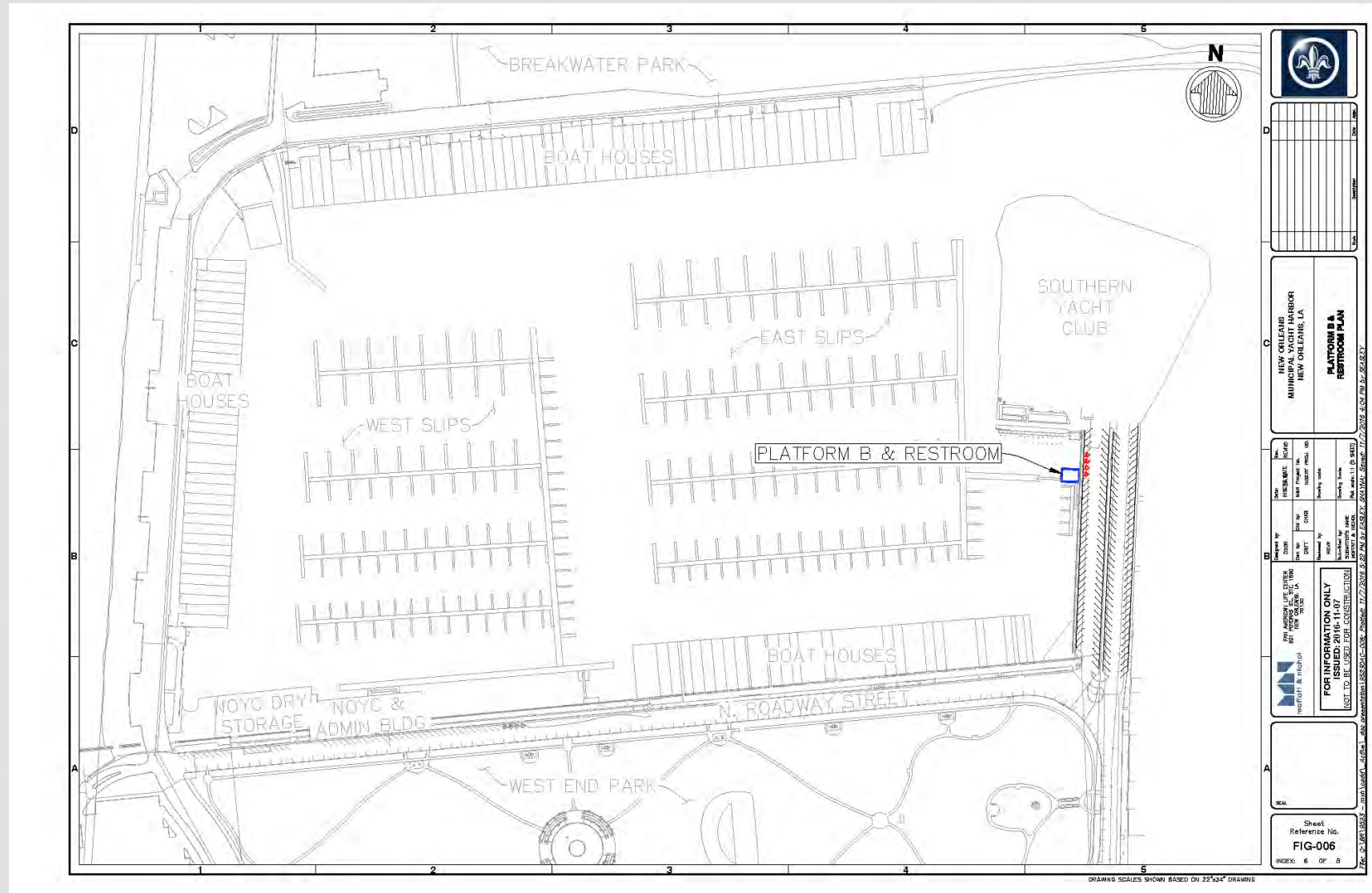




# West Marina / Park Entrance

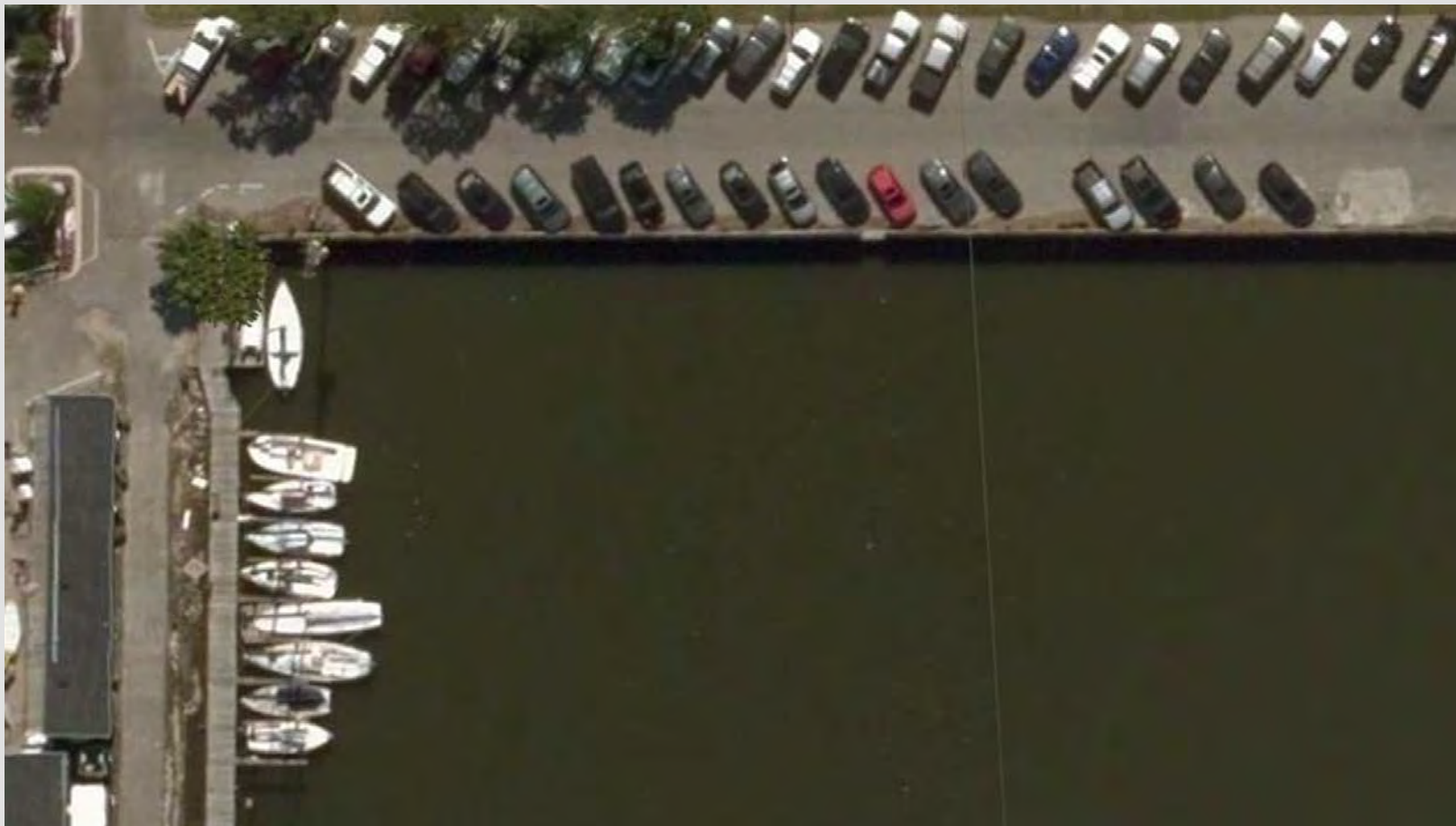
- Metal fencing and guard rails are powder coated with a metallic paint finish – Silver.
- Site accessories including lighting, benches, trash cans, bike racks and dumpster fencing are fabricated in metal with a powder coated metallic paint finish – Titanium.
- MYH Logo is fabricated in aluminum with powder coated paint finish and polished metal.

# Phase 1: Construct East Marina Entry





# East Marina Entry: Existing



# East Marina Entry: Proposed





# Phase 1: East Marina Entry

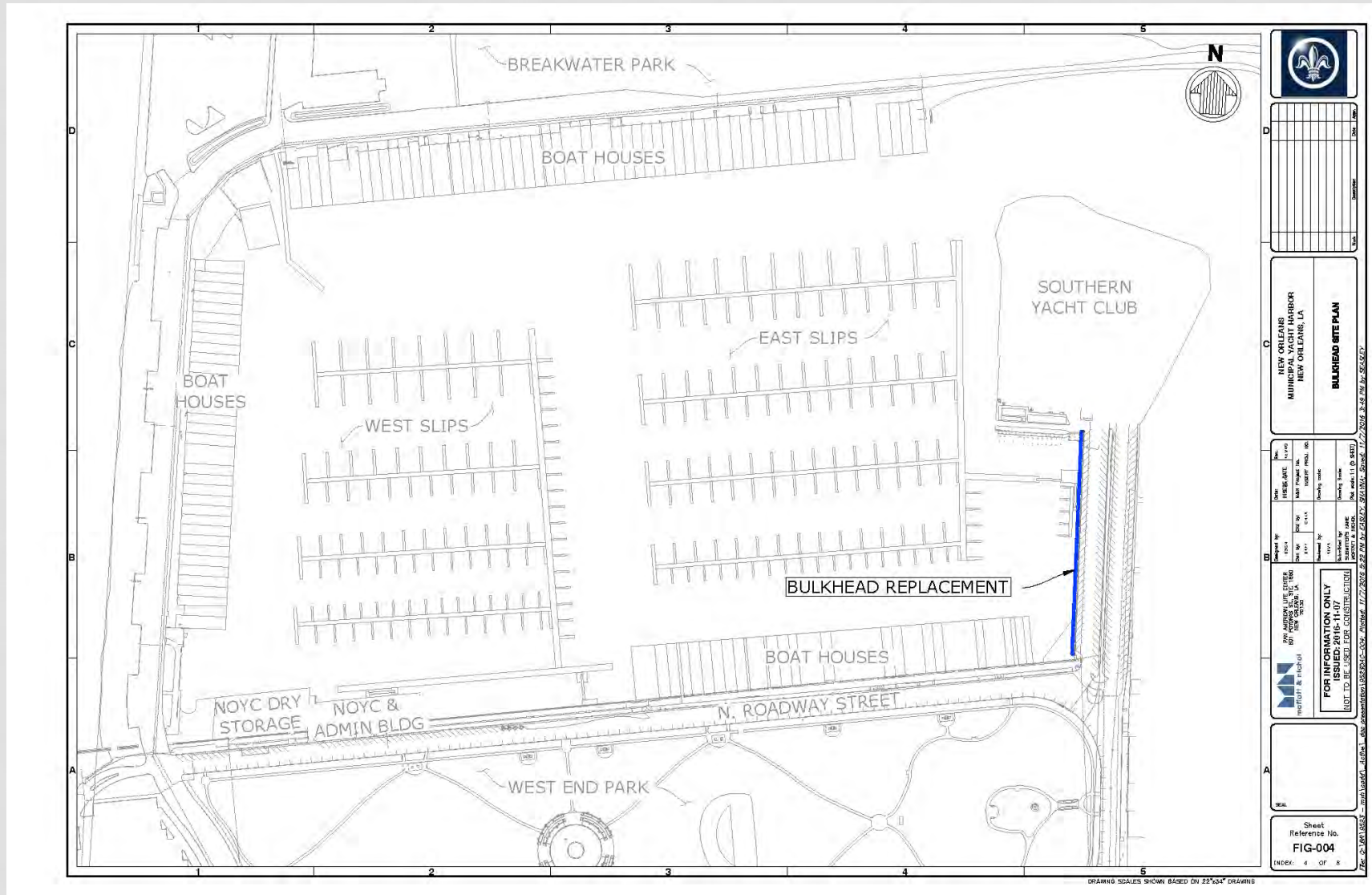


# East Marina Entrance & Comfort Station

- Main building is constructed of steel frame construction with galvalume metal panels and roof supported on galvanized steel metal columns.
- The ground floor will be covered with a perforated steel panel with a powder coated metallic paint finish.
- All fencing, rails and stairs will be metal fabrication with a powder coated metal paint finish.



# Phase 1: Bulkhead Reconstruction

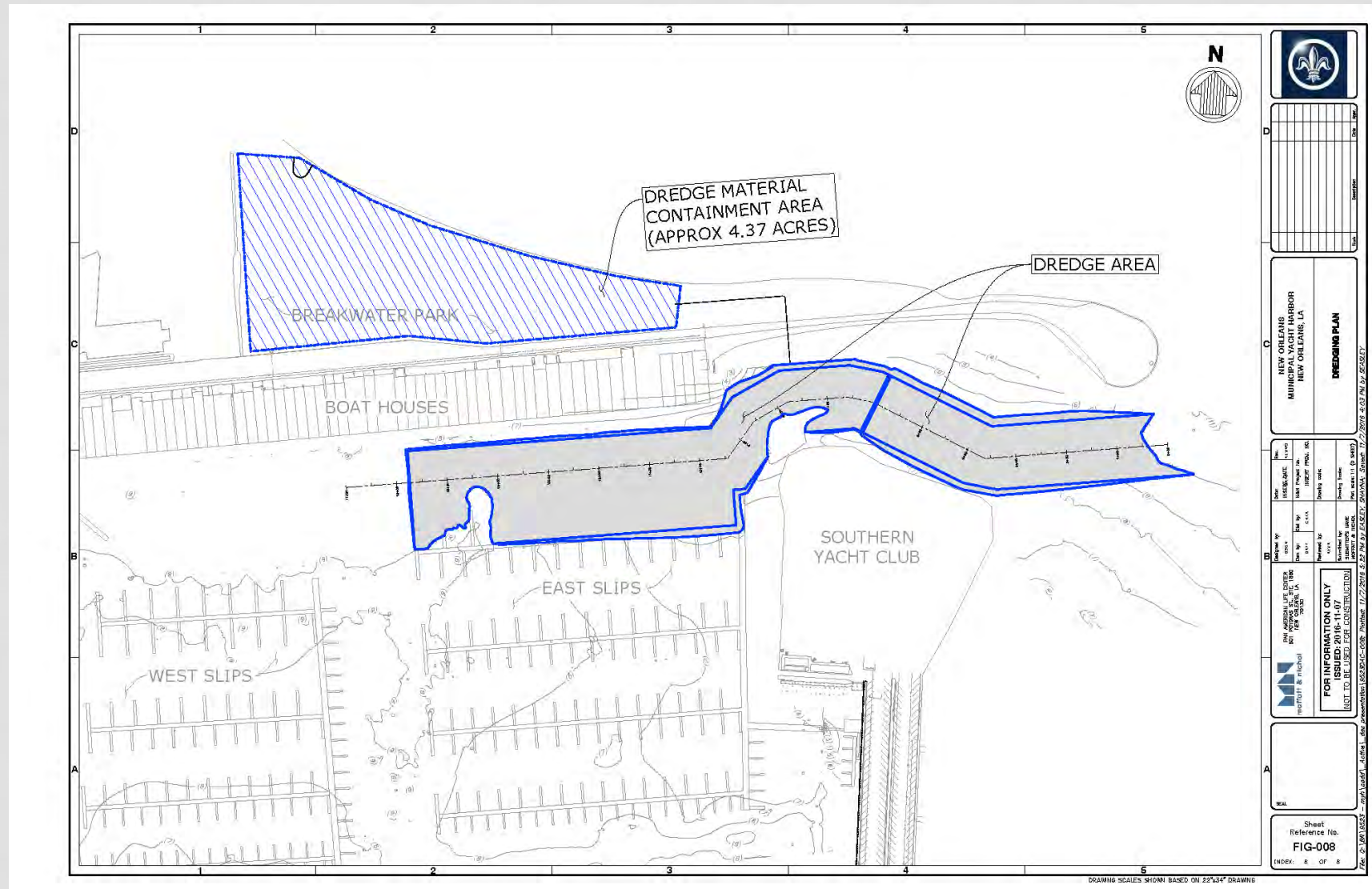


# Phase 1: Bulkhead Reconstruction

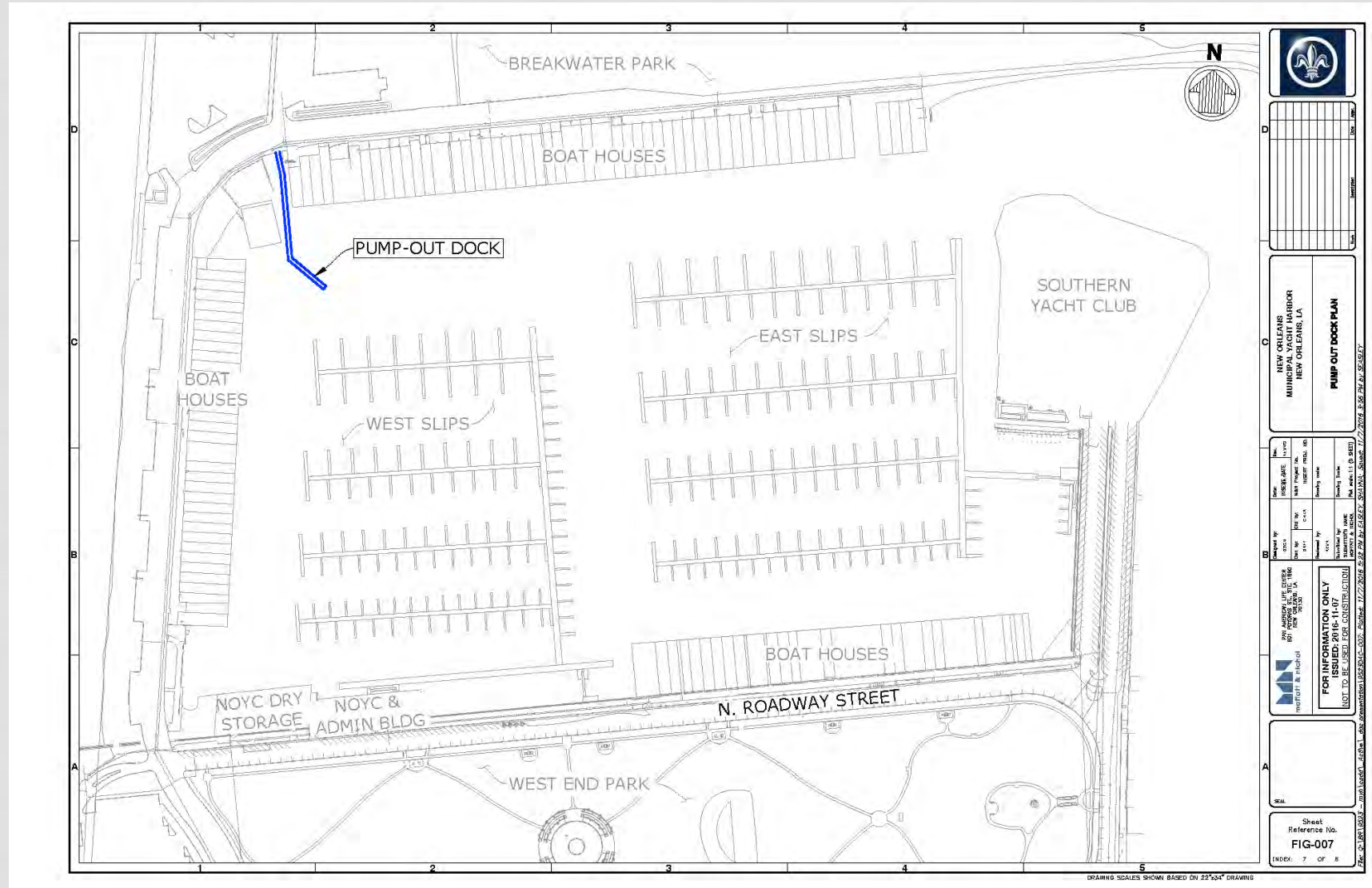




# Maintenance Dredging – Master Plan



# Phase 1: Rehabilitate Pump-out Dock





# Schedule & Budget

## Project Schedule



## Project Budget

Professional Services – \$2 Million Dollars

- Includes Architectural Services, Marine Engineering Services, Land Surveys, Hydrographic Surveys, Bathymetric Surveys, Environmental Testing, Geotechnical Services, Material Testing and Permitting Fees.

Construction Services – \$22 Million Dollars (includes hard costs and contingencies)

- New Floating Docks, West Marina Entrance, East Marina Entrance (w/ restroom), Bulkhead Reconstruction and Maintenance Dredging.

An aerial photograph of a large marina at dusk. Numerous sailboats of various sizes are docked in neat rows along a complex system of wooden piers. The water is calm, reflecting the twilight sky. In the background, a long row of white boat storage sheds with arched openings lines the shore. The overall atmosphere is serene and quiet.

Questions or comments?





moffatt & nichol  
Creative People, Practical Solutions.®

THANK YOU!

[moffattnichol.com](http://moffattnichol.com)