



CITY OF NEW ORLEANS

Blight**STAT**

Reporting Period: May, 2012

www.nola.gov/opa

Agenda

8:00-8:20 Announcements - LYB

8:20-8:40 Inspections

8:40-9:00 Hearings

9:00-9:20 Abatement

9:20-9:40 Code Lien Foreclosures

9:40-10:00 Reinvestment

Blight**STAT** feedback form on back page of presentation



ANNOUNCEMENTS



ServeNOLA Love Your Block

Spring 2012 program

Lower 9th Ward A Community Voice:

Clean-up and lot-clearing near Sam Bonart Playground (1200 Forstall)

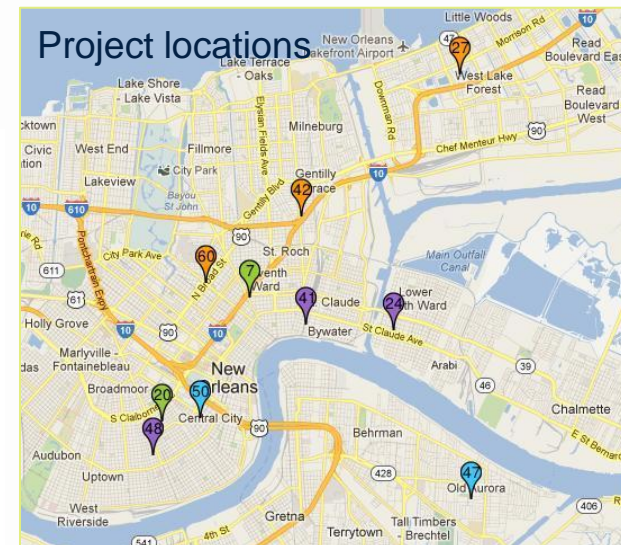


Quick Stats:

64	Project applications received
10	Projects funded
213	Volunteers
~1,000	Volunteer hours contributed

Montegut & Dauphine Neighbors Group:

Graffiti removal, Container gardening, tree planting (2900 Dauphine)

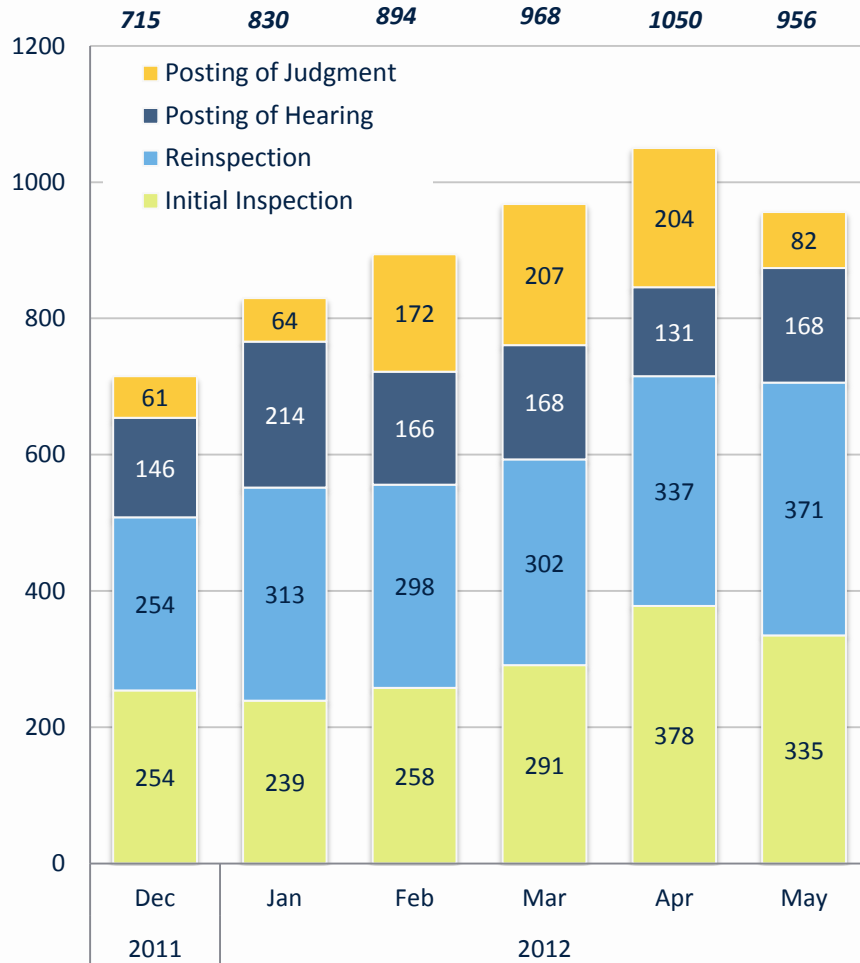


INSPECTIONS

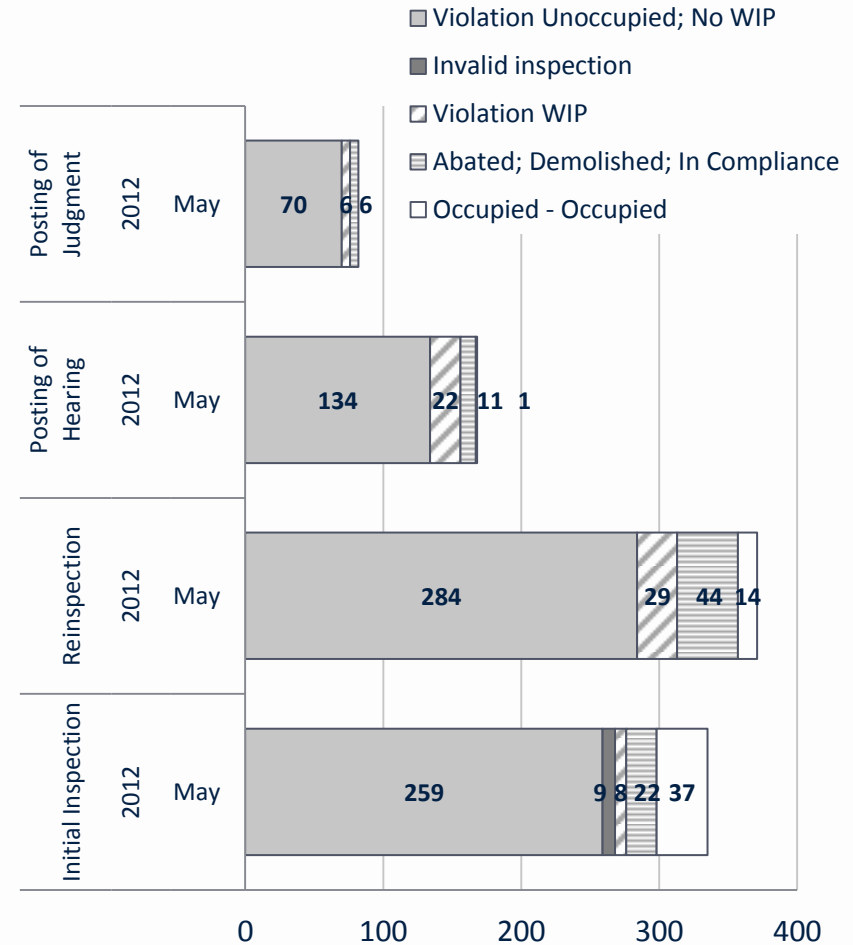


Inspections by Type and Result

Type of Inspection by Month



Completed Inspection Results

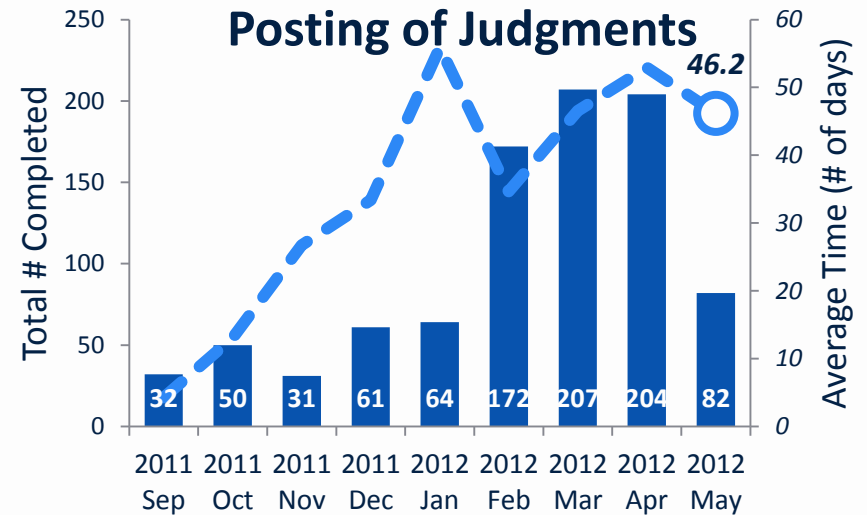
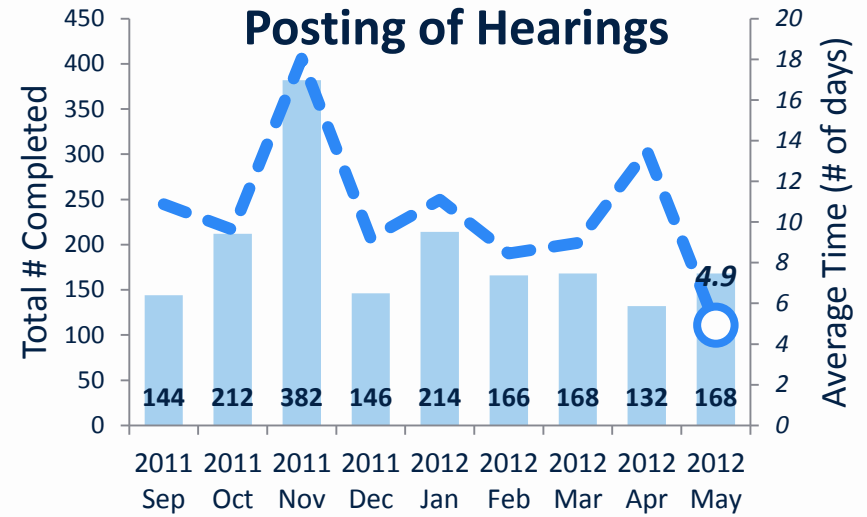


Source: Code Enforcement, Inspections Completed by Inspector Report May 13st – Accela Systems



BlightSTAT May, 2012

Timeliness of Inspections improves greatly



Source: Code Enforcement, Inspections Completed by
Inspector Report May 31st – Accela Systems

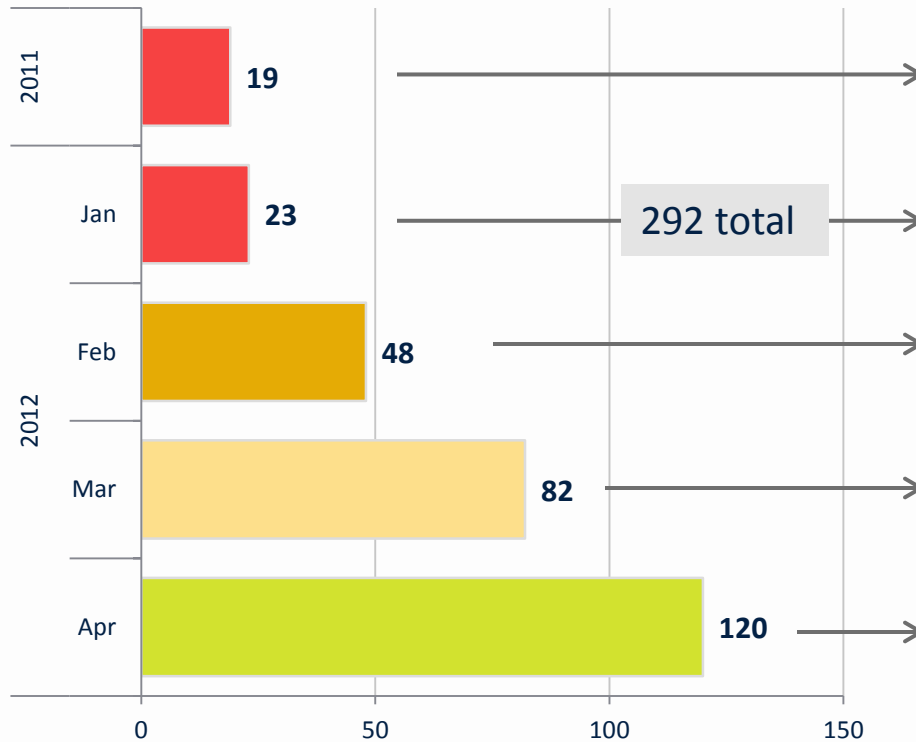


BlightSTAT May, 2012

Open Complaints

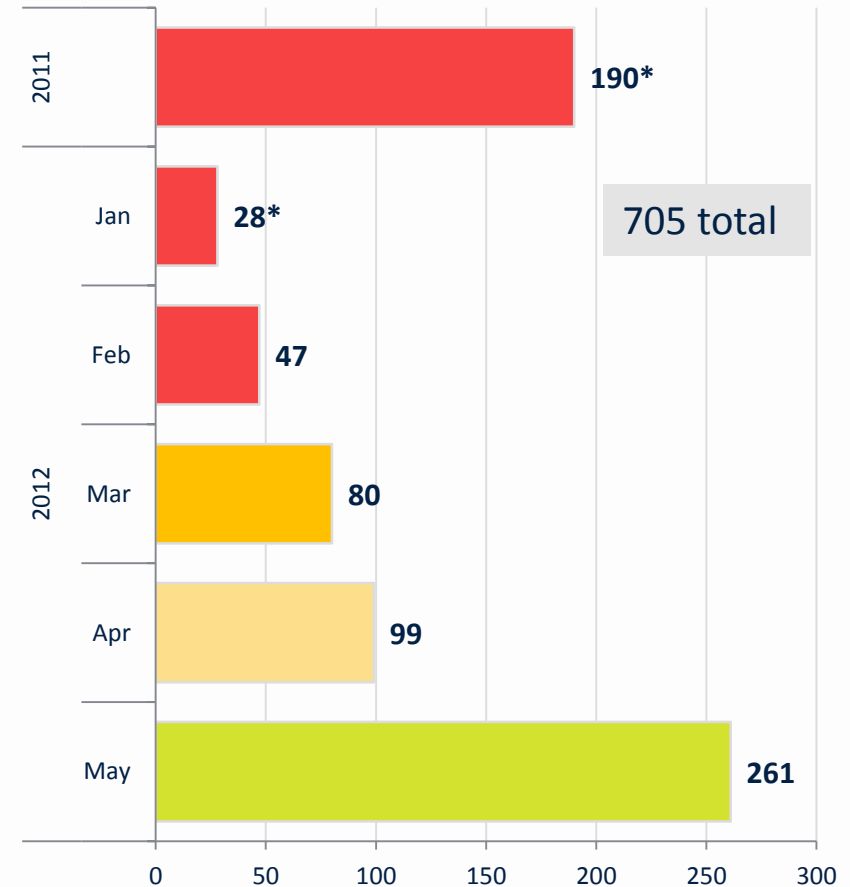
Incomplete Complaint Inspections

As of April 30th



Incomplete Complaint Inspections

As of May 31st



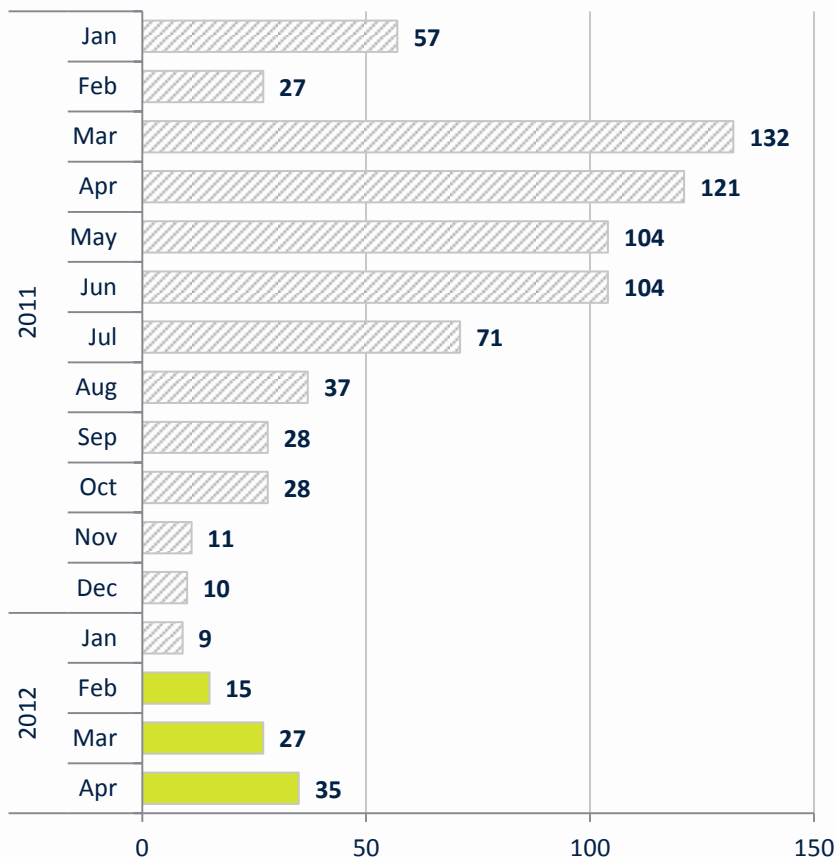
* The number of incomplete Complaint inspections from 2011 increased between May and April – a preliminary scan of these records indicate that a proportion of these cases contain invalid addresses. This information was vetted manually in April with the Case Supervisor, but in May this was not possible because of staffing changes. Either way, the “status” of these invalid cases have not yet been closed in the Accela system and will remain open when migrated into LAMA



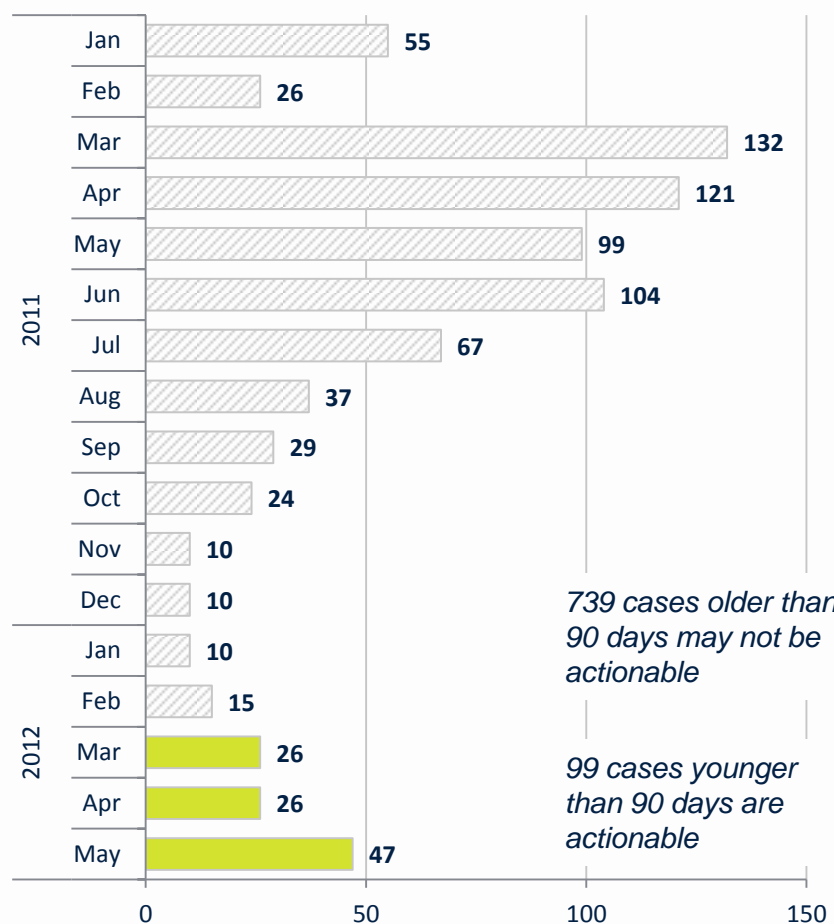
Unresolved Sweep Inspection Cases

Target is to complete initial inspections within 30 days of scheduled date

Status as of April 30th



Status as of May 31st



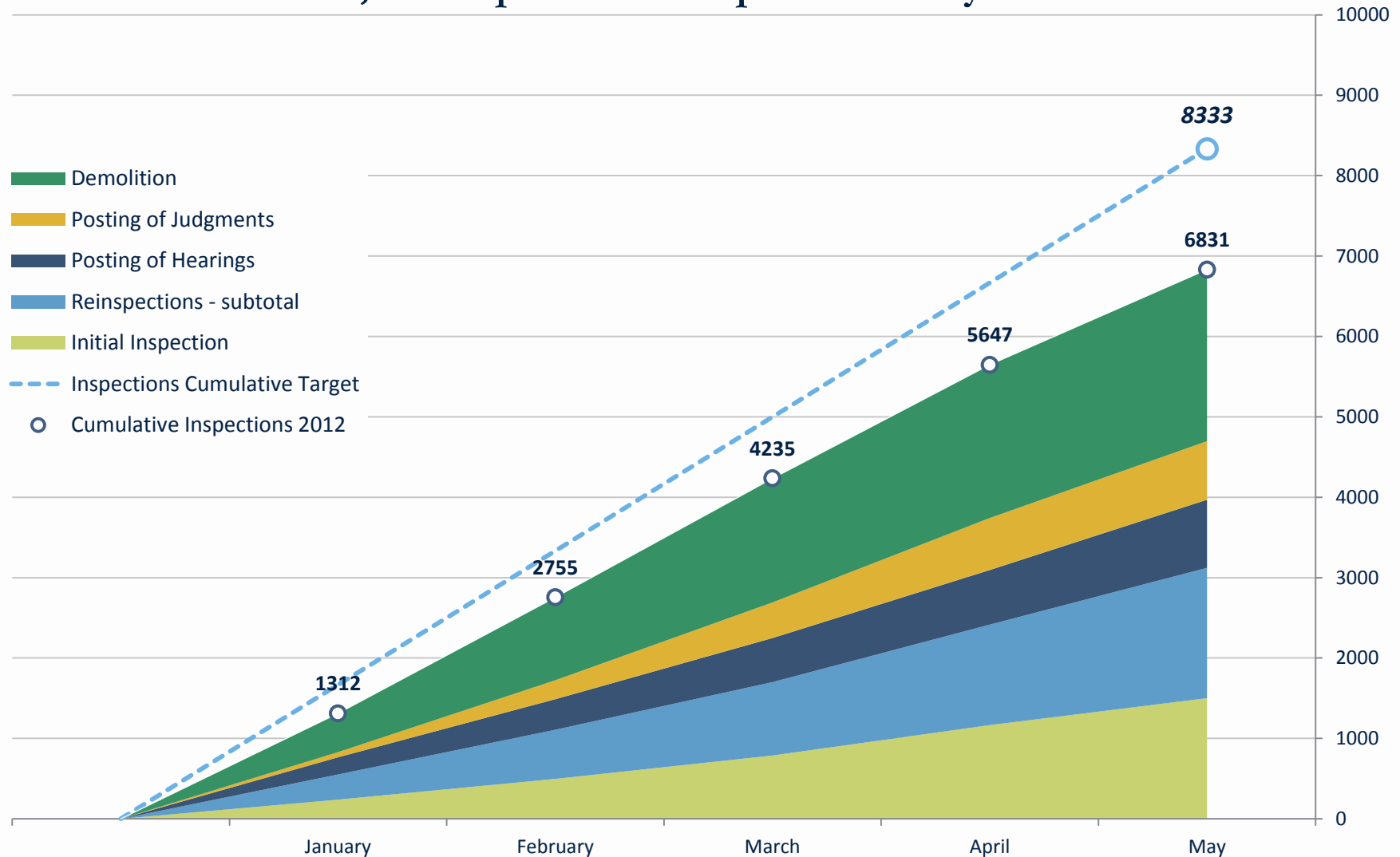
739 cases older than 90 days may not be actionable

99 cases younger than 90 days are actionable



Cumulative Inspections

1,184 Inspections completed in May



Source: Code Enforcement, Inspections Completed by
Inspector Report May 31st – Accela Systems



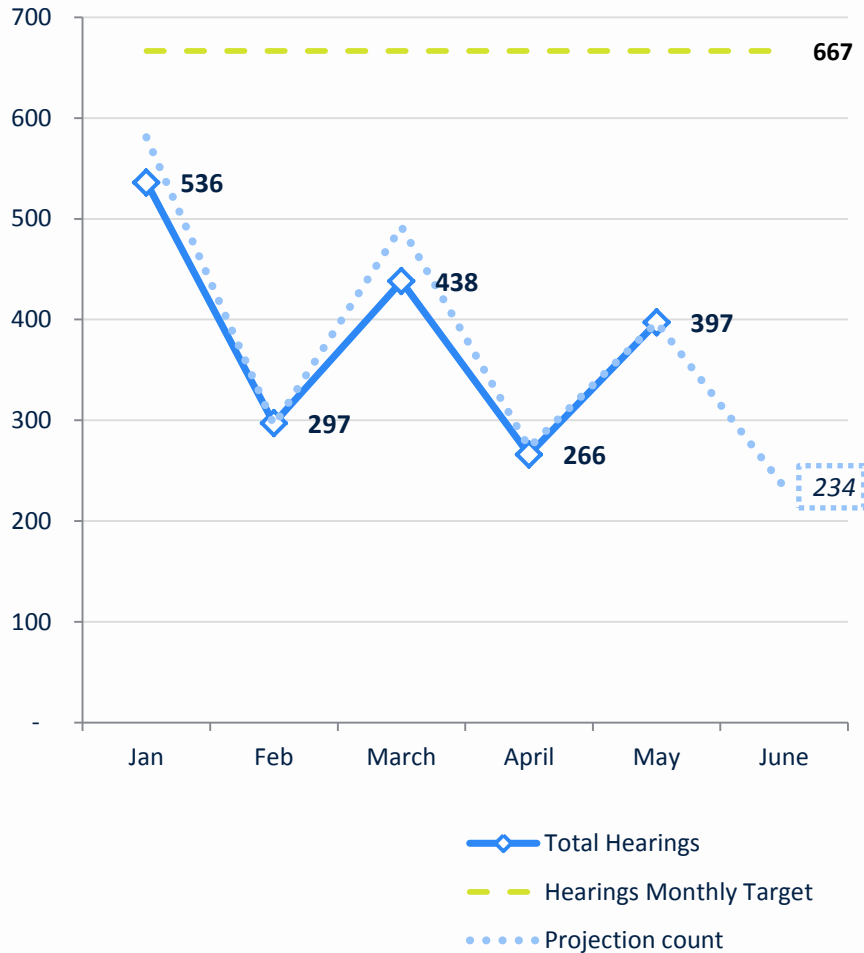
BlightSTAT May, 2012

HEARINGS

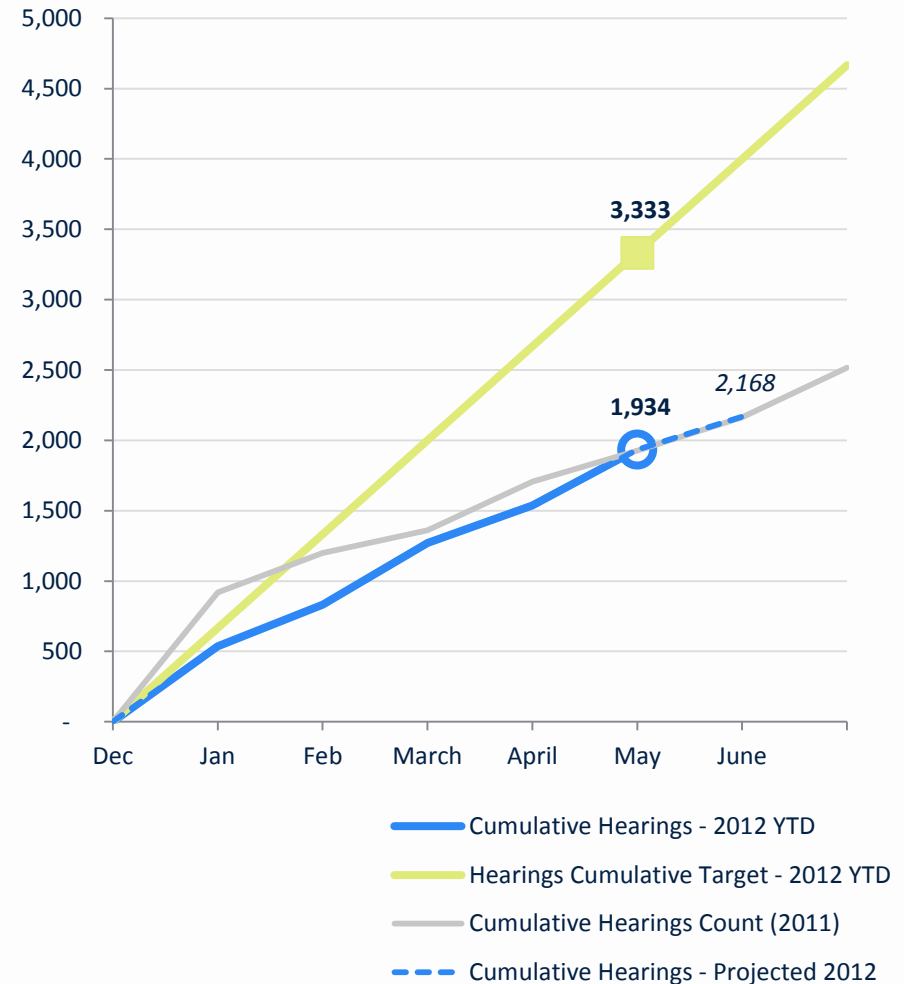


Number of Hearings per month

Monthly totals



Cumulative Hearings Trend



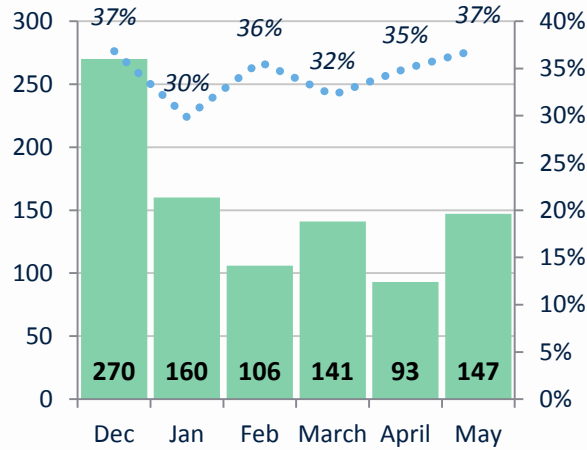
Note: Projection for the Month of May actually covers May 1 – June 8, 2012, as the Hearings Bureau has stopped setting cases for Hearing after this date while preparing for new system.

Source: Hearings Bureau, incremental Hearing Docket Reports, July 1, 2011 – May 31st, 2012

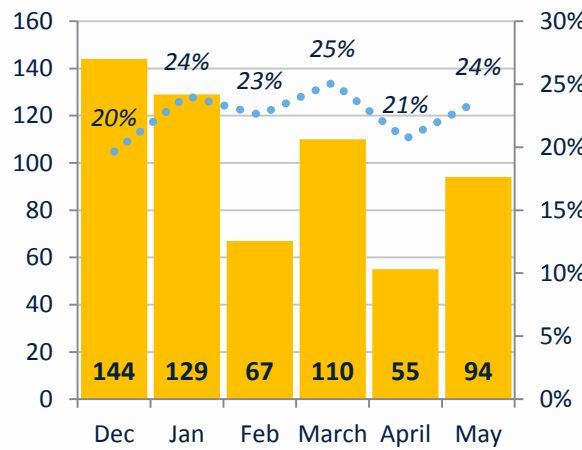


Trend in Hearing Results

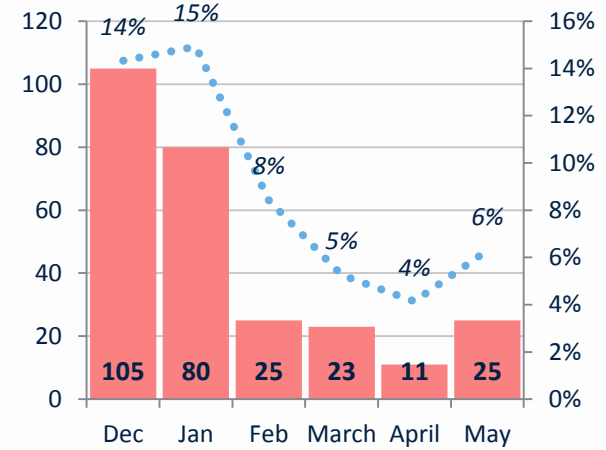
Guilty



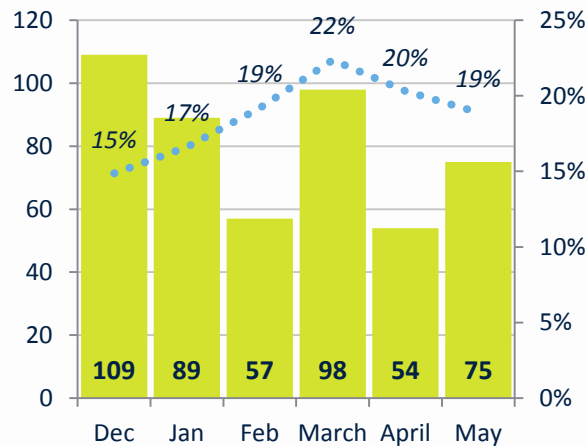
Reset: Work in Progress



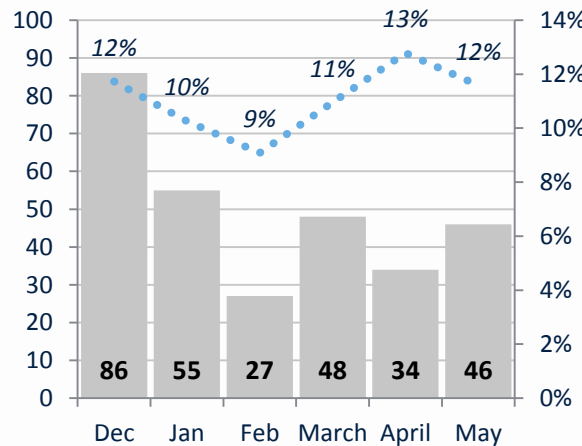
Reset: No Reinspection



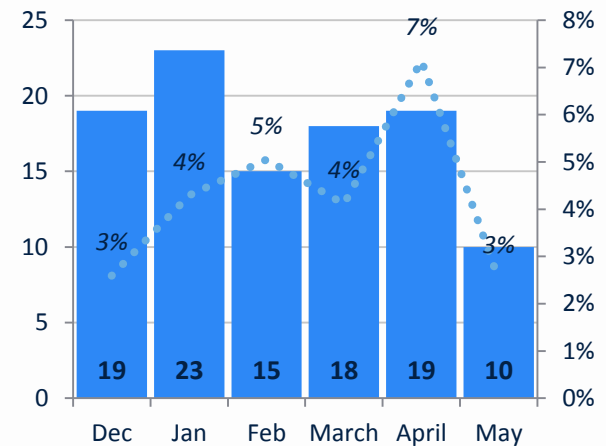
In Compliance



Dismissed; Reset Legal Issue



Reset: State Program



Source: Hearings Bureau, incremental Hearing Docket Reports, July 1, 2011 –

May 31st, 2012

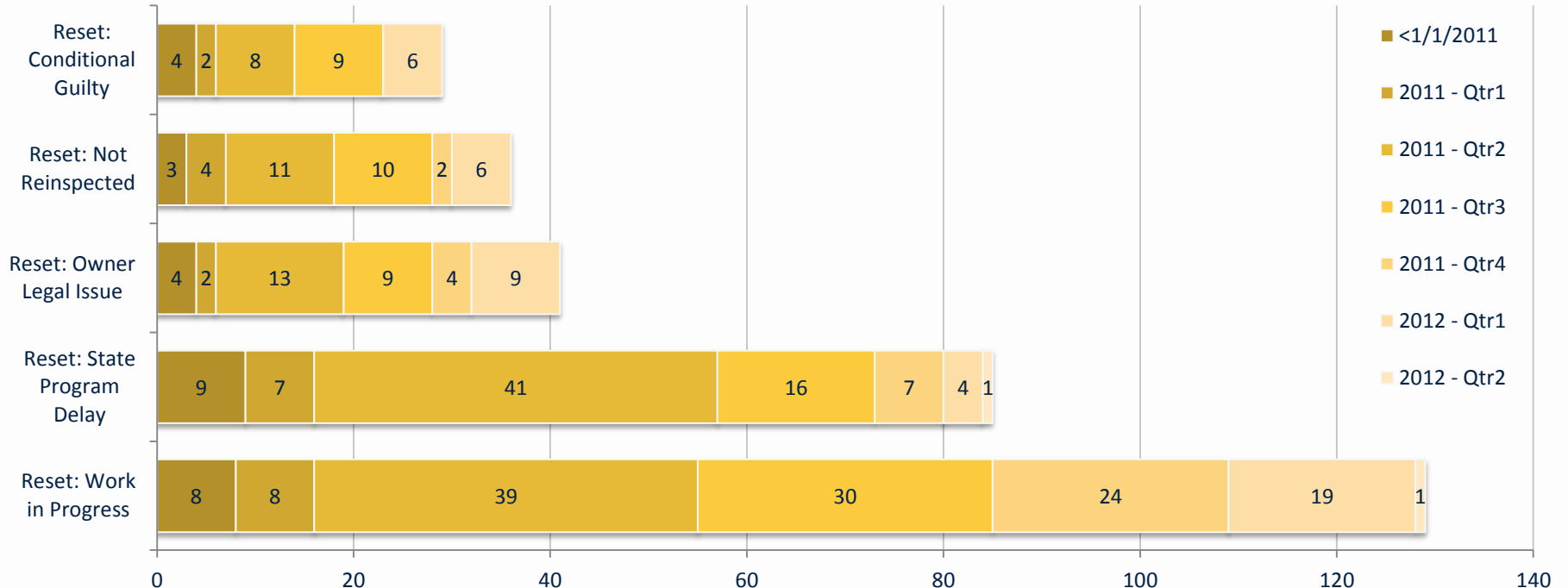
Note that previously three results: Dismissed, Reset: Legal Issue and Reset: State Program were grouped together as one category



Age of Reset Hearing Cases

Grouped by Quarter of Initial Inspection

(does not include properties pending adjudication)

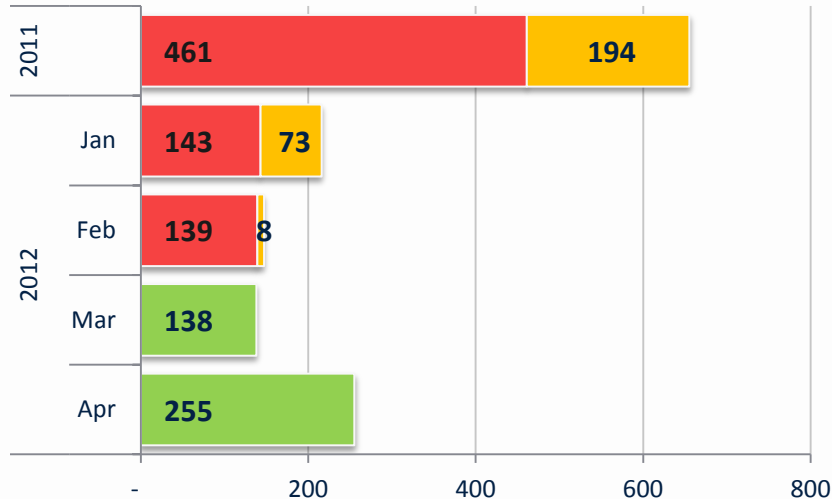


	Reset: Work in Progress	Reset: State Program Delay	Reset: Owner Legal Issue	Reset: Not Reinspected	Reset: Conditional Guilty
<1/1/2011	8	9	4	3	4
2011 - Qtr1	8	7	2	4	2
2011 - Qtr2	39	41	13	11	8
2011 - Qtr3	30	16	9	10	9
2011 - Qtr4	24	7	4	2	
2012 - Qtr1	19	4	9	6	6
2012 - Qtr2	1	1			



Revised Hearings Backlog

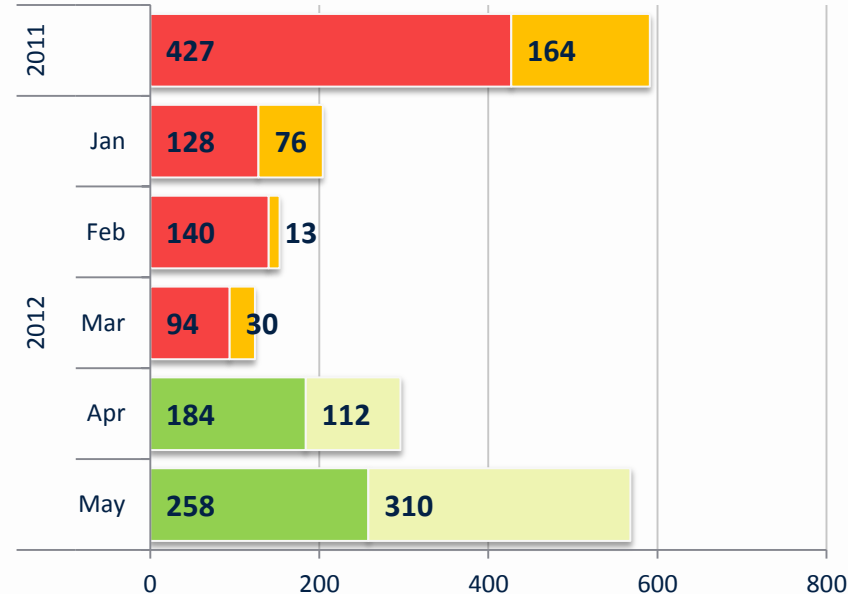
Case Status – as of April 30th



LEGEND

- **Backlog** (new case, with an inspection more than 60 days old)
- **Stalled** (case in research, no activity in more than 60 days)
- **Worklog** (new case, initial inspection less than 60 days old)
- **In Process** (case in-research, recent activity within past 60 days)

Case Status – as of May 31st



Count of Addresses			
As of May 31st	New Case	In Research	Grand Total
2011	427	164	591
2012			
Jan	128	76	204
Feb	140	13	153
Mar	94	30	124
Apr	184	112	296
May	258	310	568
Grand Total	1231	705	1936

Source: Hearings Bureau, de-duplicated/compiled Hearing Docket Report, March 1, 2011 – May 31, 2012



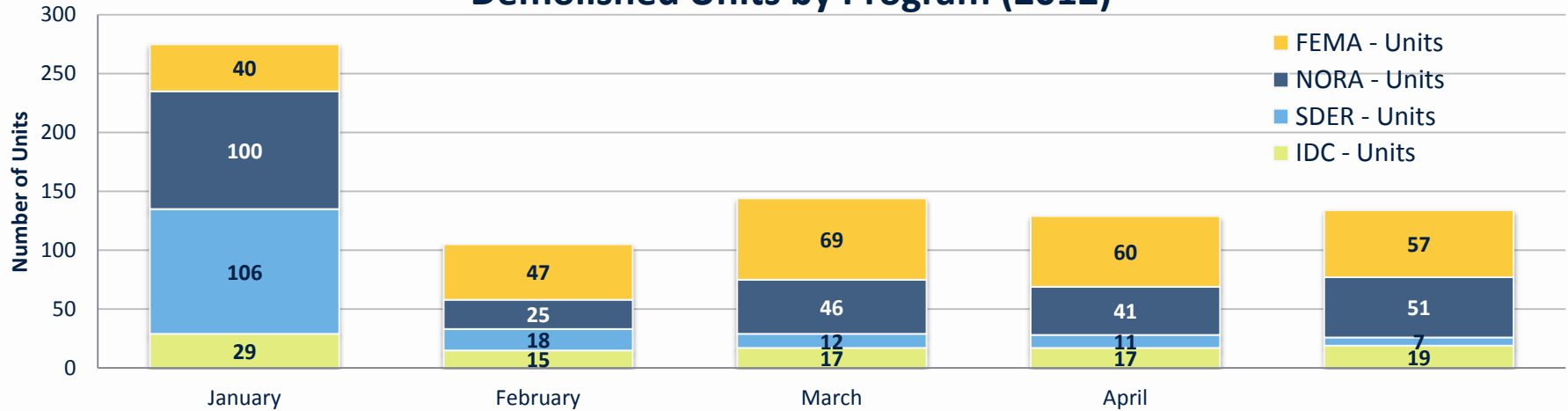
BlightSTAT May, 2012

ABATEMENT

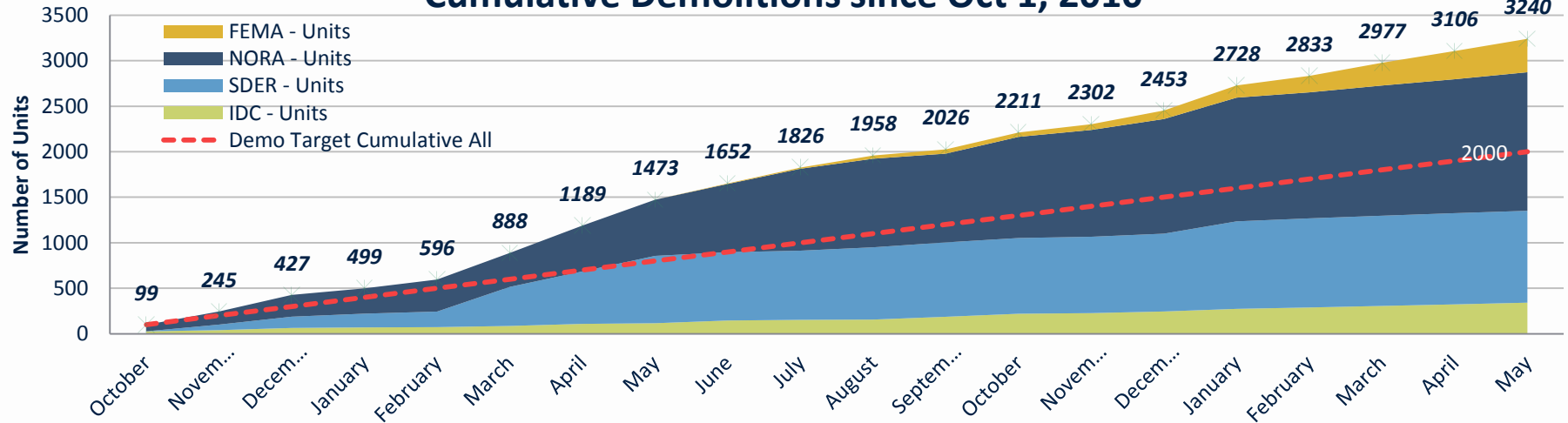


Demolitions by Program

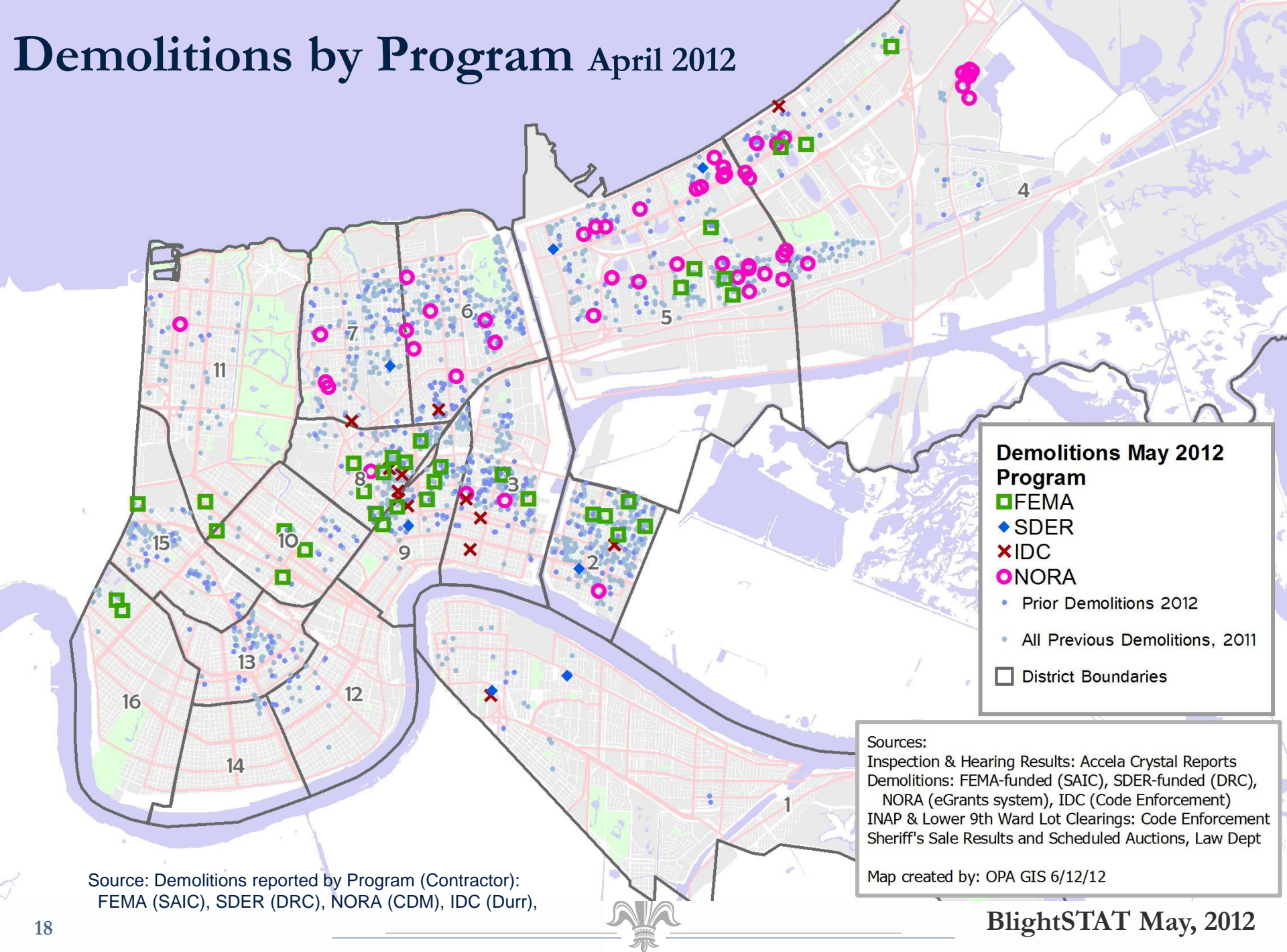
Demolished Units by Program (2012)



Cumulative Demolitions since Oct 1, 2010



Demolitions by Program April 2012



New Orleans FEMA Demolitions

May 2012

Phase	Apr	May	Properties	Change	Description
01 LLT/NORA	60	60	60	0	<ul style="list-style-type: none"> Transferring from LLT to NORA ownership FEMA program can demo after transfer with City approval
02 Sheriff Sale	34	35	35	+1	<ul style="list-style-type: none"> Processing for Sheriff sale Reviewing properties to determine best disposition Unsold properties can go to demolition Highly damaged properties may be demolished and sold
03 Inspection	56	42	42	-14	<ul style="list-style-type: none"> Does not have a future hearing date set Non-adjudicated and awaiting inspection and hearing
04 Hearing	45	32	32	-13	<ul style="list-style-type: none"> Has an initial or reset hearing date in the future Awaiting judgment
05 Noticing	21	21	21	0	<ul style="list-style-type: none"> Newly adjudicated In process of notice of judgment and intent to demolish Homeowner appeal period
06 Local Historic	1	2	2	+1	<ul style="list-style-type: none"> Adjudicated and waiting historic committee meeting NCDC, HDLC, or City Council decision
07 Legal Review	6	6	6	0	<ul style="list-style-type: none"> Adjudicated and waiting Law Department review Ensuring proper notice of hearing, judgment, & intent
08 Salvage	15	4	4	-11	<ul style="list-style-type: none"> FEMA Historic Preservation determined for Salvage Permitting and selective salvage come before ACM testing
09 ACM Test	7	3	3	-4	<ul style="list-style-type: none"> For non-salvage properties testing precedes permitting Awaiting testing or test results
10 Permit	4	5	5	+1	<ul style="list-style-type: none"> Ready to be permitted for demolition Awaiting application, payment, or delivery of permit
11 Transmit	30	18	18	-12	<ul style="list-style-type: none"> Transmitted or ready to transmit to demolition contractor May be waiting for utilities disconnects Awaiting abatement (when required) and demolition
12 Demolished	198	233	233	+35	<ul style="list-style-type: none"> Property has passed all preliminary checks Demolition is underway or completed
13 Indefinite Hold	60	54	54	-6	<ul style="list-style-type: none"> May not reach final disposition under FEMA program NCDC/HDLC Denials State funding programs Official City or State requests to place on hold
14 In Compliance	384	406	406	+22	<ul style="list-style-type: none"> Homeowner has brought property into compliance Includes properties demolished by owner Public nuisance and blight remediated

Change in May:

22 to Compliance

35 Demolitions / 57 Units

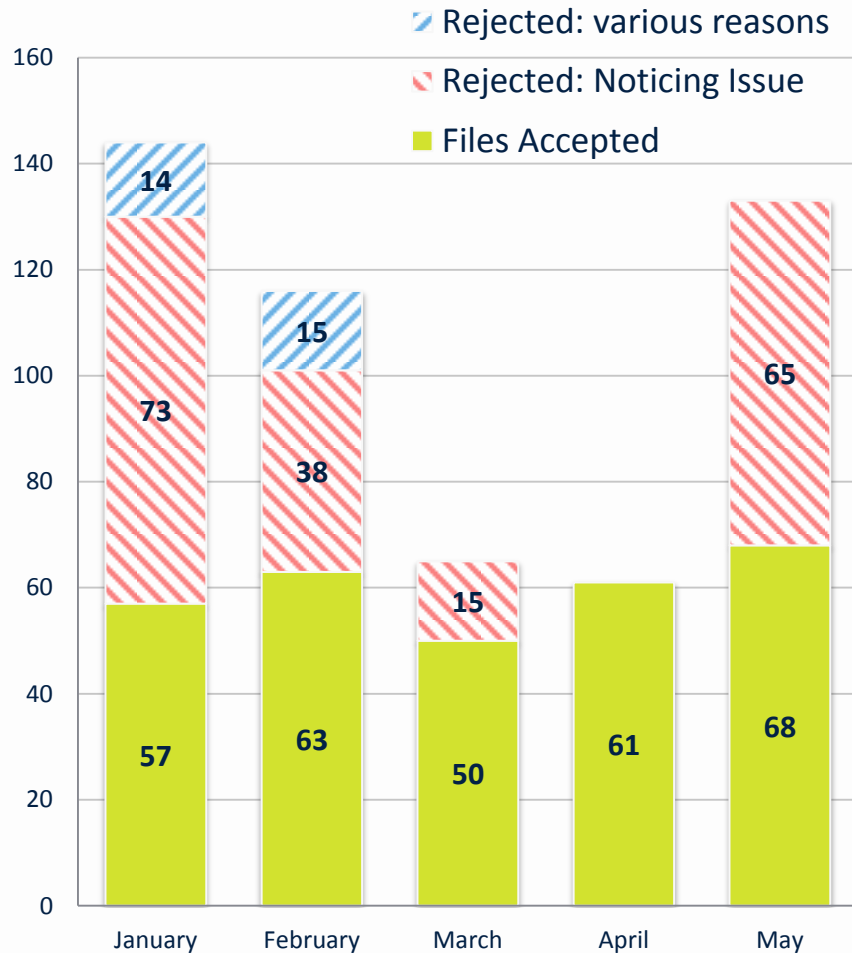


CODE LIEN FORECLOSURES

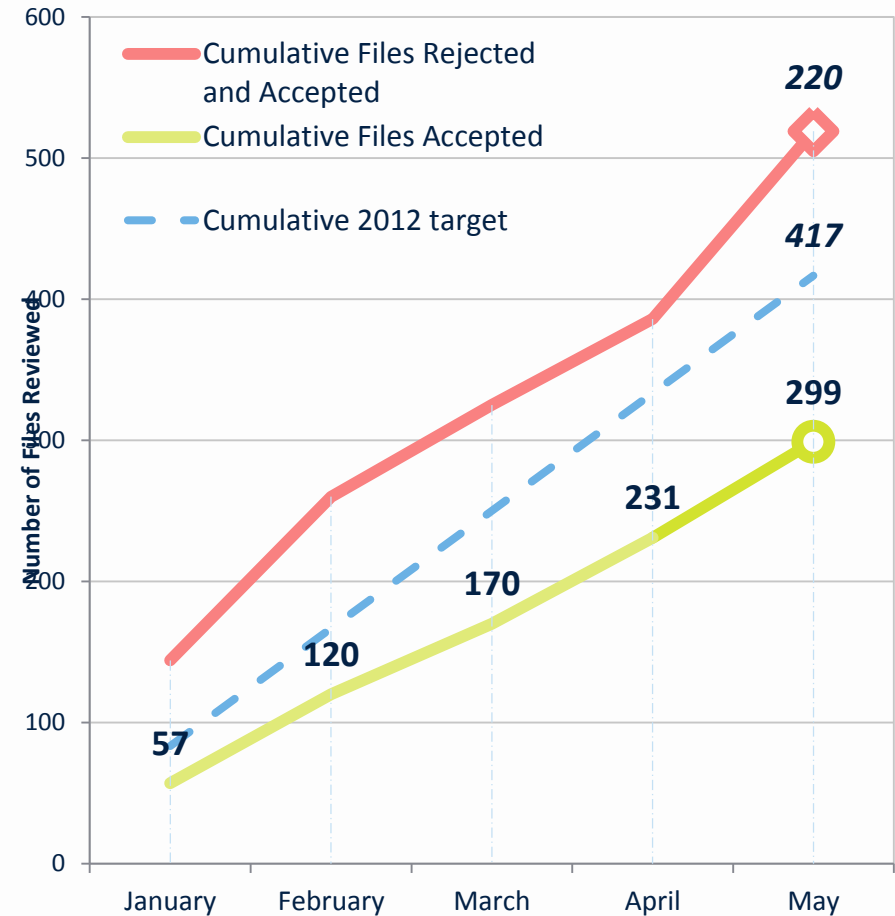


68 Files Accepted for Foreclosure proceedings during period

Monthly Totals



Cumulative Totals compared to 2012 Target

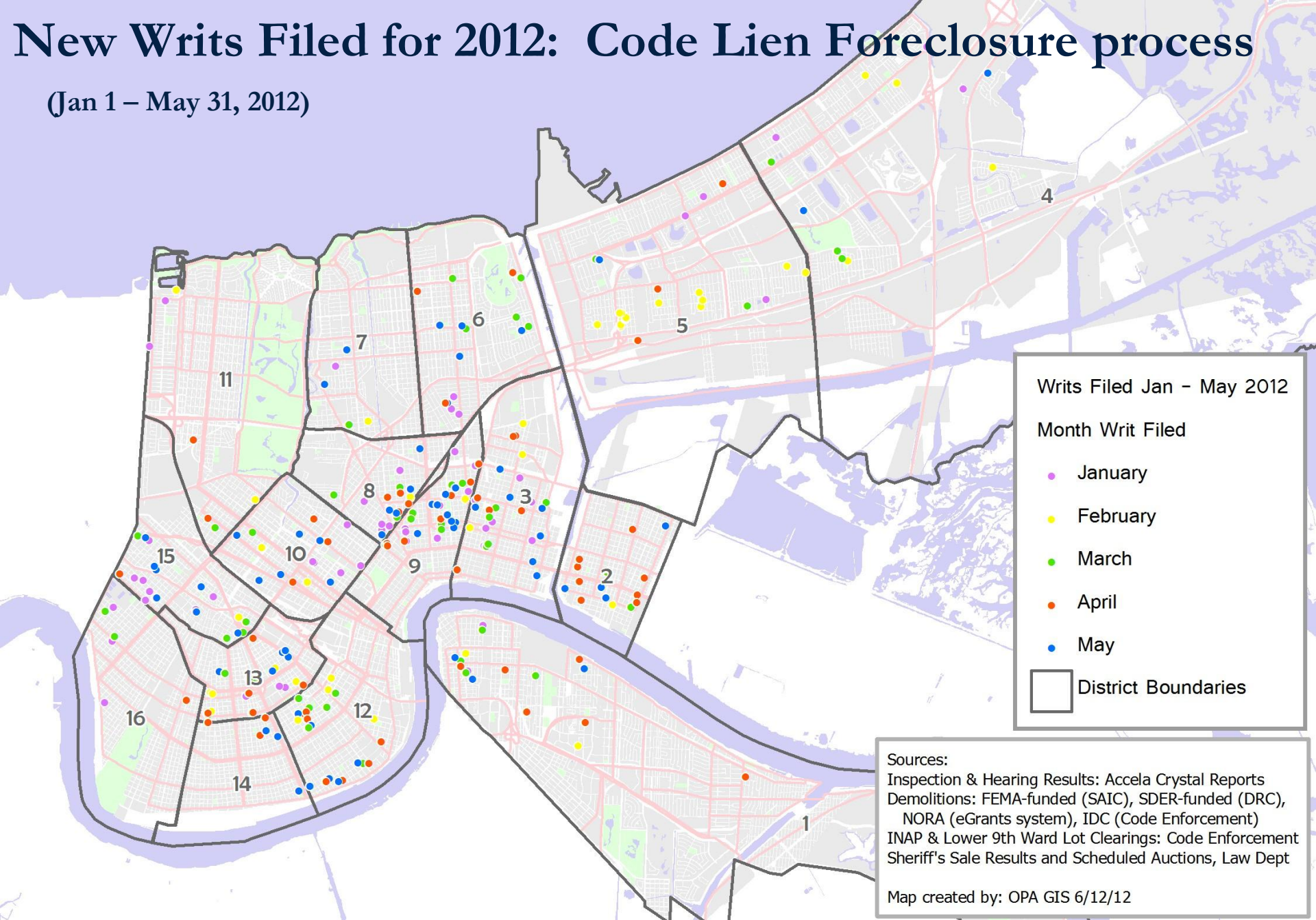


*Note: No information on rejected files was provided in April



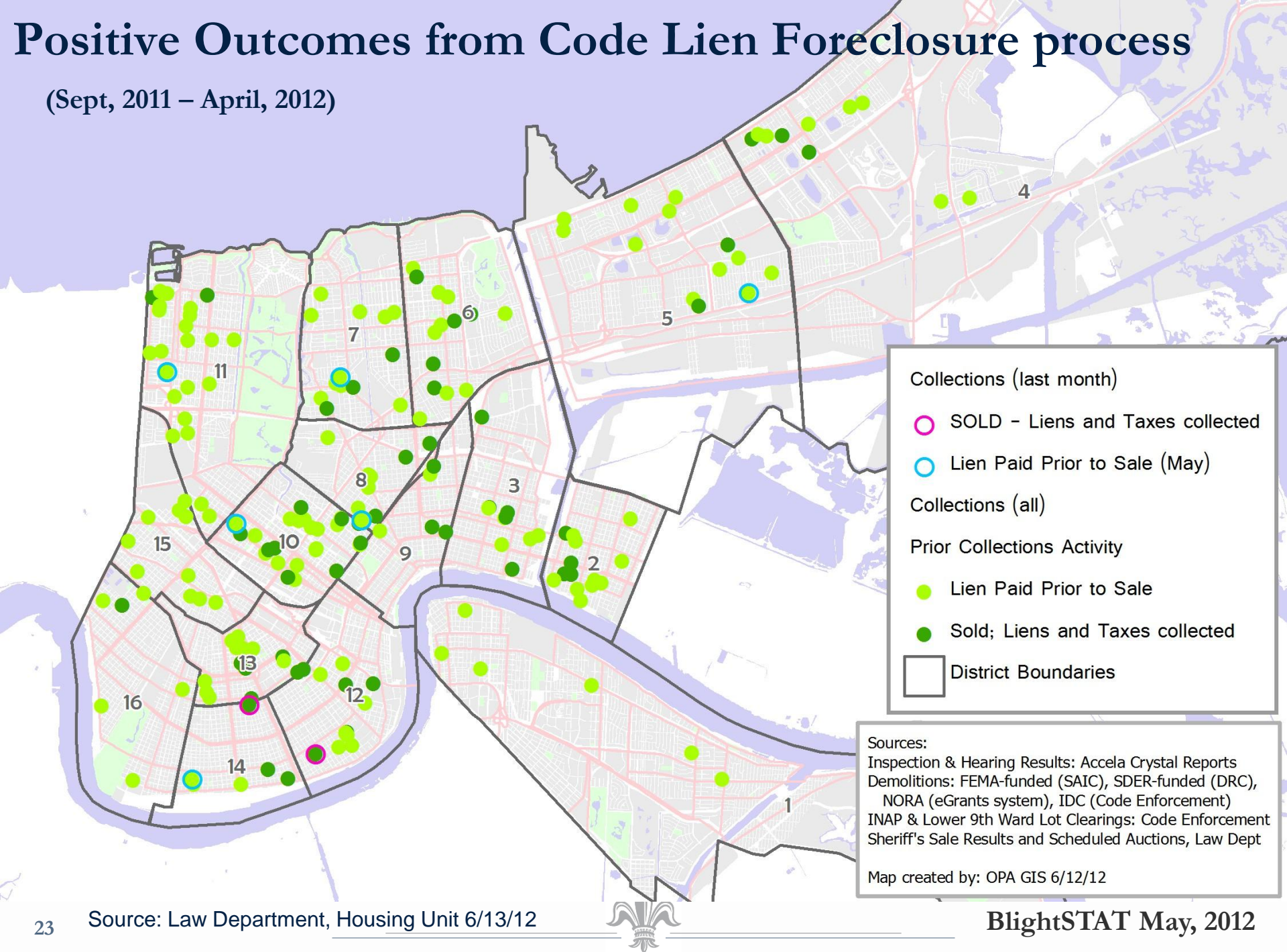
New Writs Filed for 2012: Code Lien Foreclosure process

(Jan 1 – May 31, 2012)

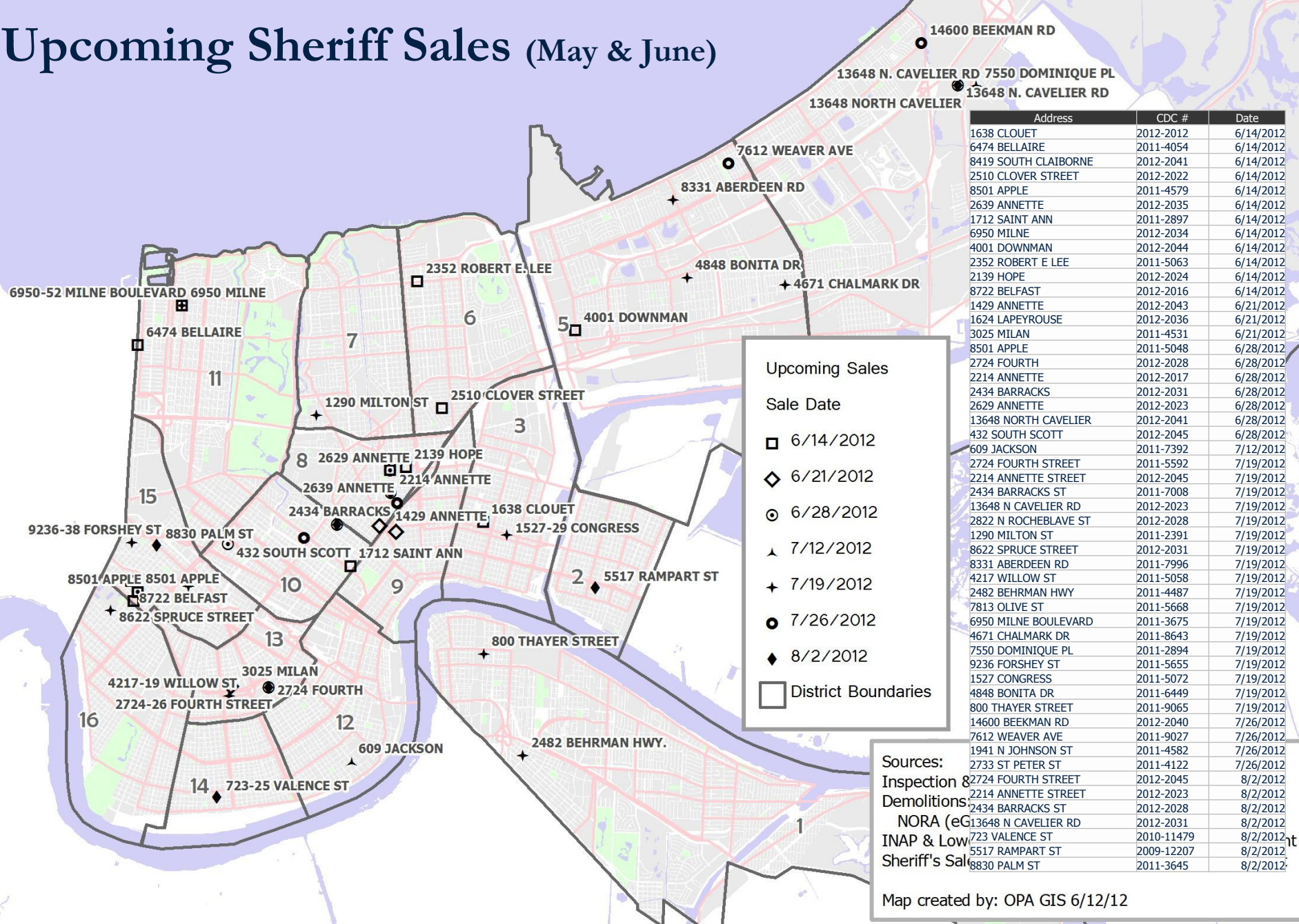


Positive Outcomes from Code Lien Foreclosure process

(Sept, 2011 – April, 2012)

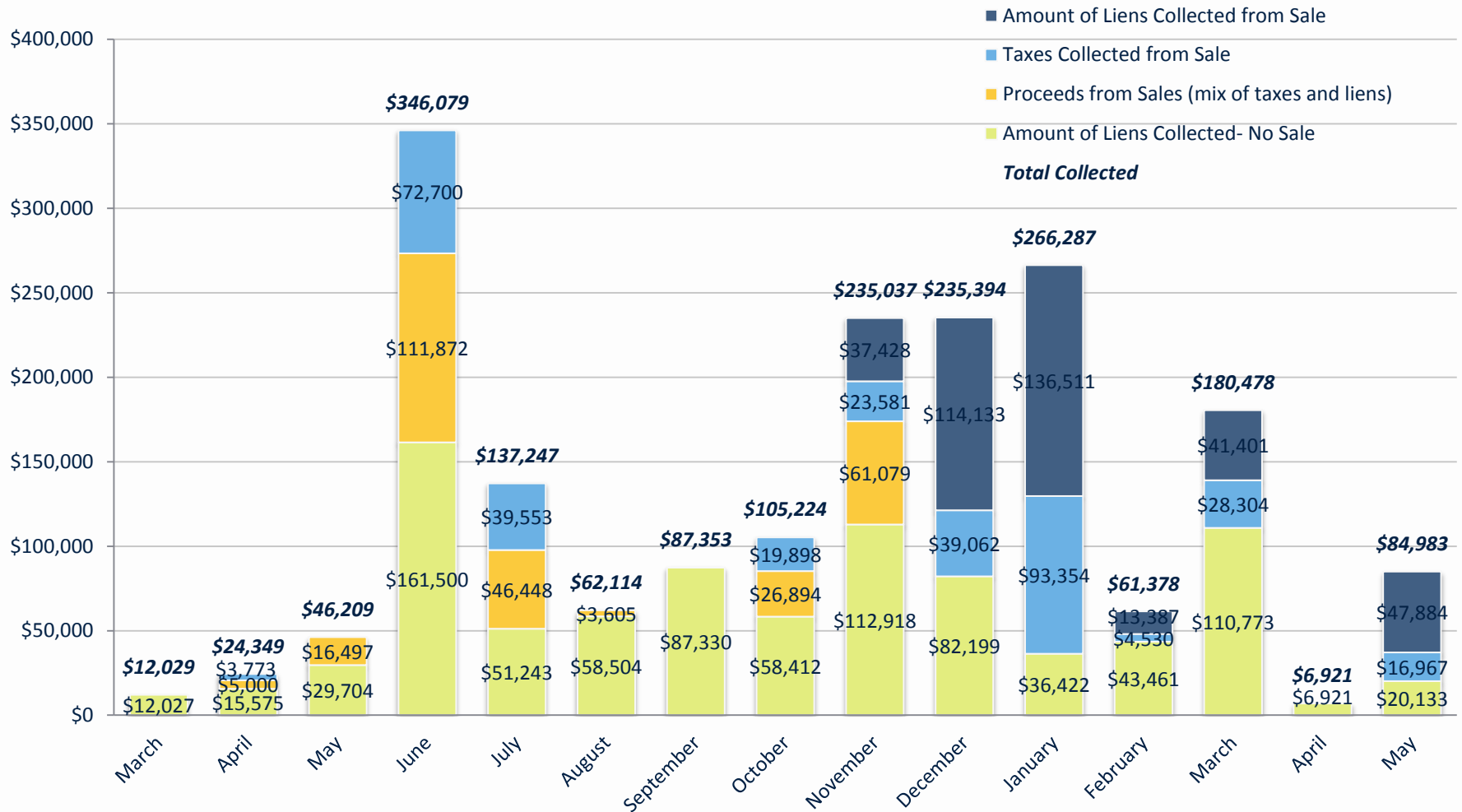


Upcoming Sheriff Sales (May & June)



Proceeds from Sheriff Sales

(related to Code Lien foreclosures)



Note: totals are rounded to the whole dollar value, but source data includes cents, so rounding errors may occur between subtotals and total

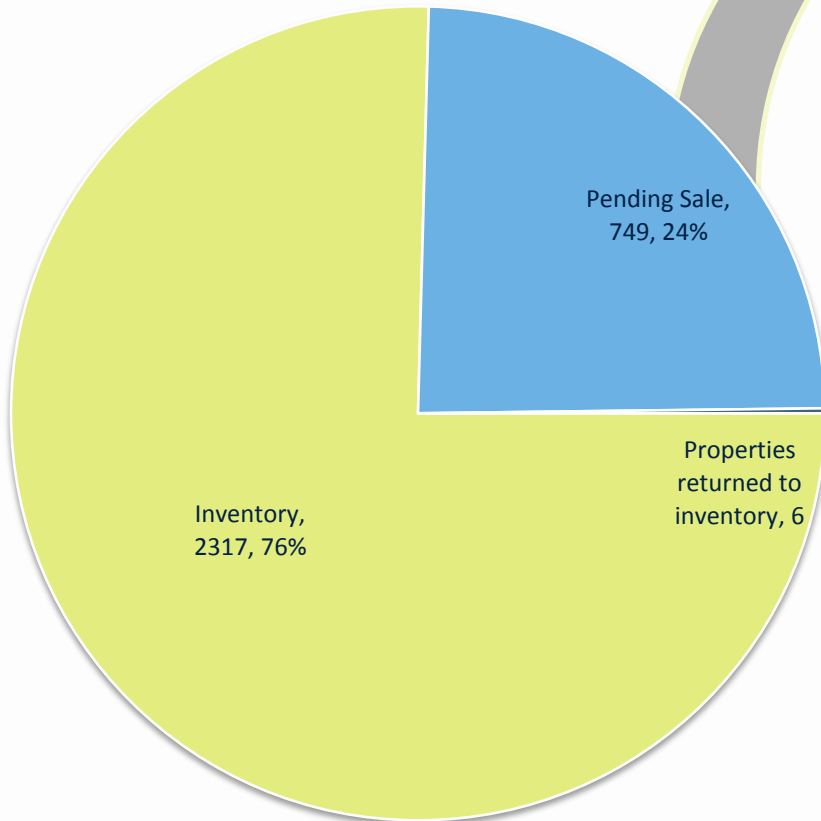


REINVESTMENT

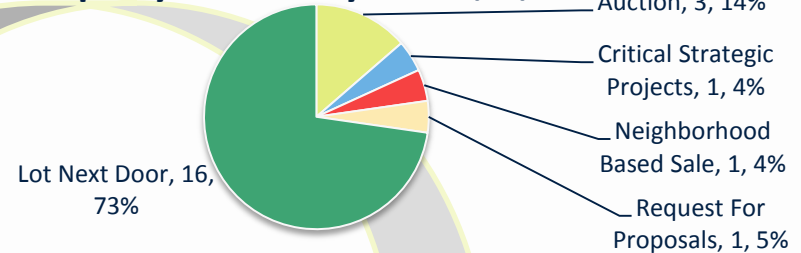


NORA/LLT Inventory Disposition

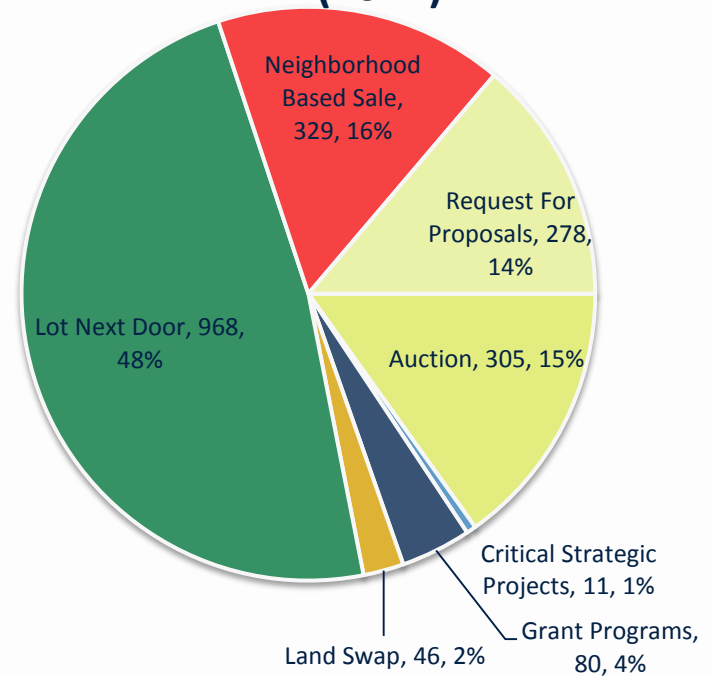
Inventory Status as of May 31, 2012



Property Sales-May 2012 (22)



Properties Previously Sold to May 2012 (2017)



Note: Because of a two-week time lag in reporting, totals for "Pending Sale" and "Properties Previously Sold" differ from what was reported in April's BlightSTAT by 20 properties

Source: NORA, May 31st, 2012



BlightSTAT May, 2012

Transfer plan of State-owned properties to NORA in Orleans Parish

	Per Period		Cumulative	
Reporting Period	Actual	Goal	Actuals	Goals
February 2012	541	500	541	498
March 2012	70	500	611	1000
April 2012	701	500	1,312	1500
May 2012	30 (1800 in process)	2133	1,342	3633

* Property dispositions include auctions, development agreements, and transfers to NORA.



Office of Community Development

Status of housing units under contract

Rental Housing Program

The Rental Housing Program provides affordable rental housing for low-moderate income families. Funds are provided to Not-For Profit and For-Profit Housing Development Organizations for the acquisition, rehabilitation, new construction and soft development cost associated with developing affordable rental housing.

Homeownership Development Program

This program provides homeownership opportunities by developing properties through acquisition, rehabilitation or new construction of homes that will be sold to low-income families. Not-for-Profit and For-Profit Housing Development Organizations can apply for HOME funds to subsidize the cost of construction, land acquisition and down payment assistance that will produce a code compliant home.

Owner-Occupied Rehabilitation Program

The Owner-Occupied Rehabilitation Program provides financial assistance to low-income homeowners to enable them to bring their residences into compliance with the Federal Government's Housing Quality Standards and the International Residential Code adopted by the City of New Orleans. The program is administered by Not-For-Profit Housing Organizations and In-House OCD staff.

Total Under Contract	Units in Pre-Development	Units Under Development	Units Completed 2012	Units Completed 2010-2011
477	41	403	33	1,018
149	85	48	16	6
335	204	83	48	326

+12
→

+24
→

NOTE: Green arrows and text reflect movement between reporting periods

Source: Office of Community Development (OCD),
April -> May reporting periods



BlightSTAT May, 2012

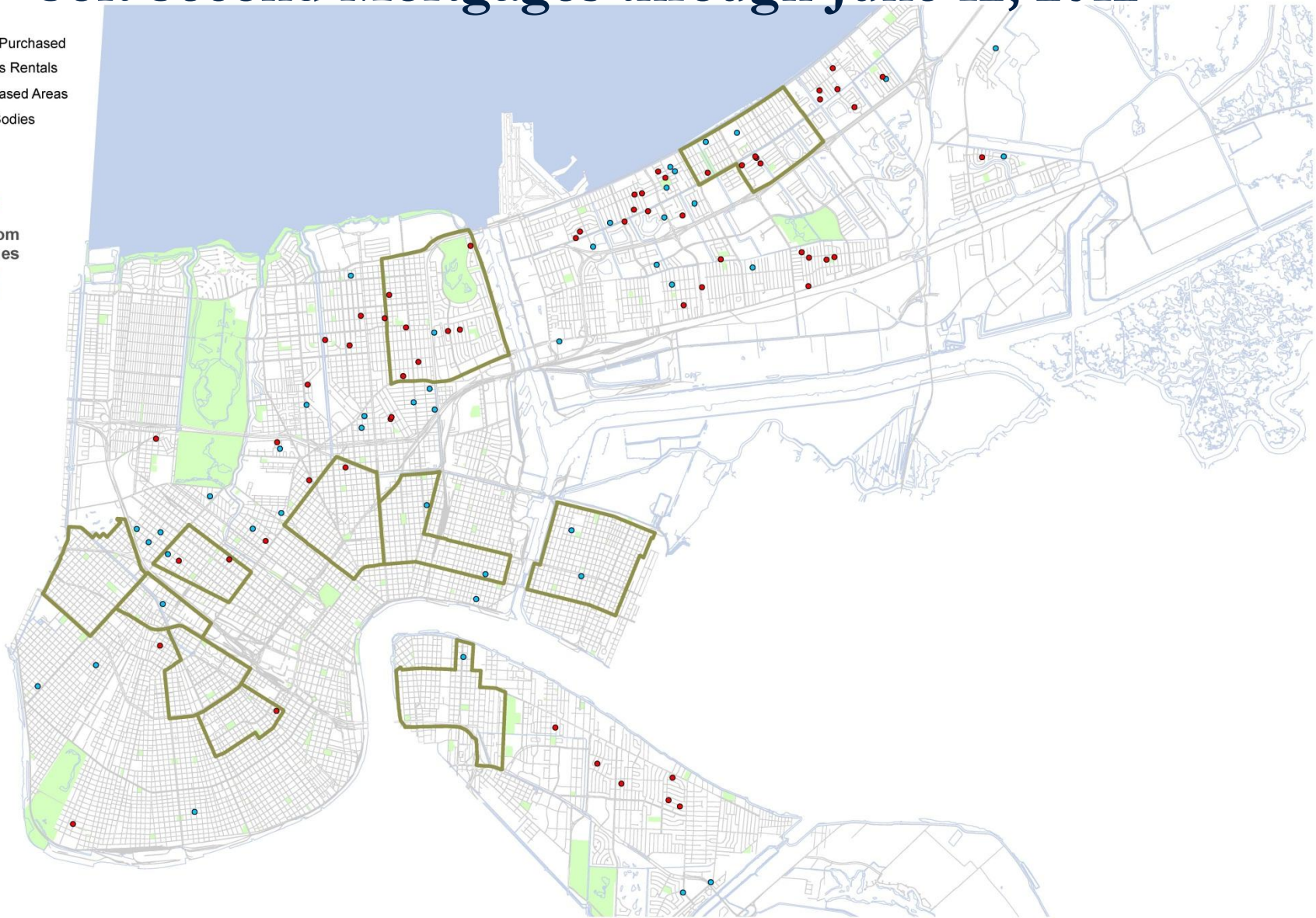
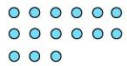
Soft Second Mortgages through June 12, 2012

Legend

- Homes Purchased
- Previous Rentals
- Place-Based Areas
- Water Bodies
- Parks



Incoming from
other Parishes



Source: Office of Community Development,
6/12/12



BlightSTAT May, 2012

Evaluation Form

Are you a city employee or a member of the public?

On a scale 1-5, how useful was this meeting to you?

(1= least useful and 5= most useful)

What's working?

What's not working?

