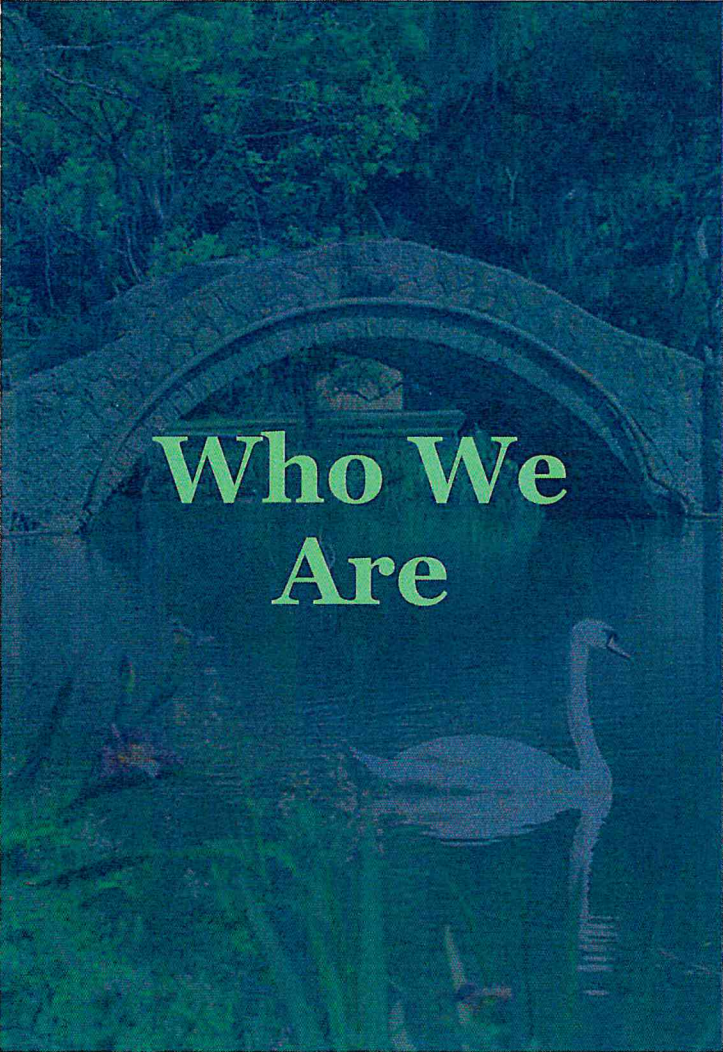


New Orleans City Park

2024 – 2028 CAPITAL BUDGET REQUEST



CITY PARK



Who We Are

- Over **170 years old**, one mile wide and three miles long, comprising a total of **1,300 acres**, New Orleans City Park is one of the largest urban parks in the United States.
- It is located in the heart of New Orleans and is the largest recreation area for the entire metropolitan area.
- The Park hosts an estimated **3,206,300 unique visitors** from around the country annually.
- Welcomes **5 times the visitors of all State Parks combined** in the State of Louisiana.
- Home to the **largest collection of live oak trees in the world**, some dating over 800 years old.

City Park is a very large 1300-acre regional park. Attendance estimates do not include international data.

TAD GORMLEY STADIUM

PAN AMERICAN STADIUM

PRACTICE TRACK

This is the only capital request that City Park is making of the City of New Orleans this year – to assist in improving the stadium experience for our residents.

Highlights to Note

- City Park Stadiums host more local athletic stadium-based events than any city-financed facility.
- The facilities have not been substantially renovated since 2005. Instead, City Park has only been able to address urgent items as they come up.
- Recent disturbing trends at stadiums, concert venues and other large places of gathering have highlighted the need for expanded security measures.
- Most stadiums of this usage and size receive municipal or state funding. Current examples include:
 - > *BREC Memorial Stadium – 21,000 seats*
 - > *Behrman Stadium – 5,000 seats*
 - > *Shrine on Airline – 10,000 seats*
- Stadiums are a local economic driver. While not at the scale of the Superdome or Smoothie King Center (both publicly funded), we have hosted major events, movie shoots and more contribute to the local economy.



Tad Gormley Stadium

Facility Details

- ✓ Opened in 1937 - Built and funded via the Works Progress Administration (WPA)
- ✓ Renovations completed in 1992, 2008, 2017

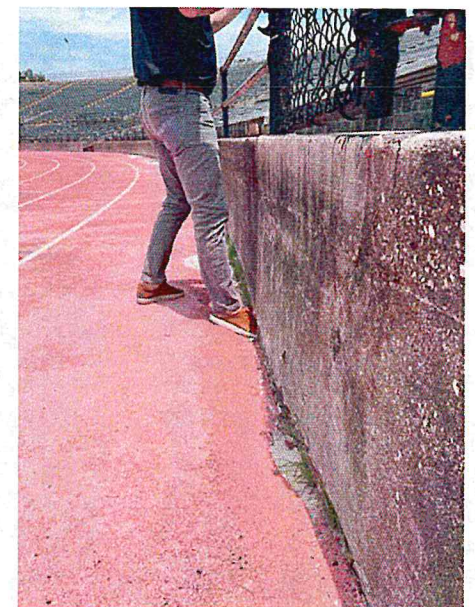
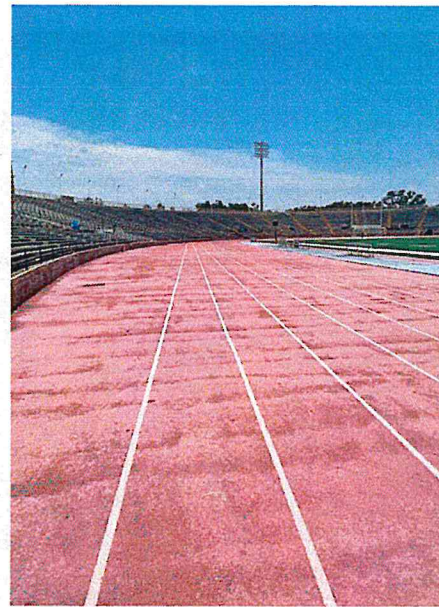
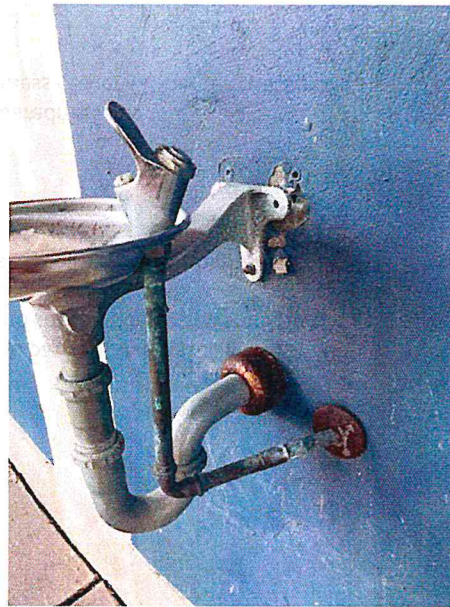
Program Elements

- ✓ 26,500 permanent seats
- ✓ Artificial turf playing field
- ✓ Three locker rooms
- ✓ Press box with seating for 110
- ✓ Electronic scoreboard and sound system

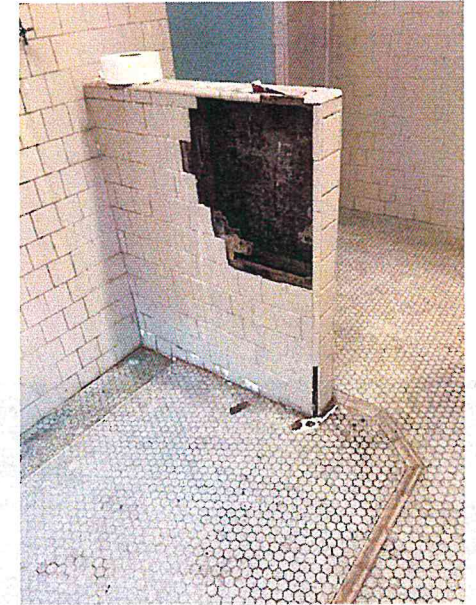
Usage

- ✓ Hosted a variety of athletic, entertainment, and patriotic events including WWII war bond drives, concerts, baseball, football and soccer games, and track and field events
- ✓ Home to UNO, Tulane and Xavier track teams as well as multiple high schools
- ✓ NFL practice field for visiting teams
- ✓ Hosted the 1992 Olympic trials
- ✓ Site of multiple movie shoots a year
- ✓ School graduations—especially during COVID
- ✓ Served as food distribution and hurricane preparedness site
- ✓ Future contemplation of emergency preparedness center + Emergency staging in parking lot

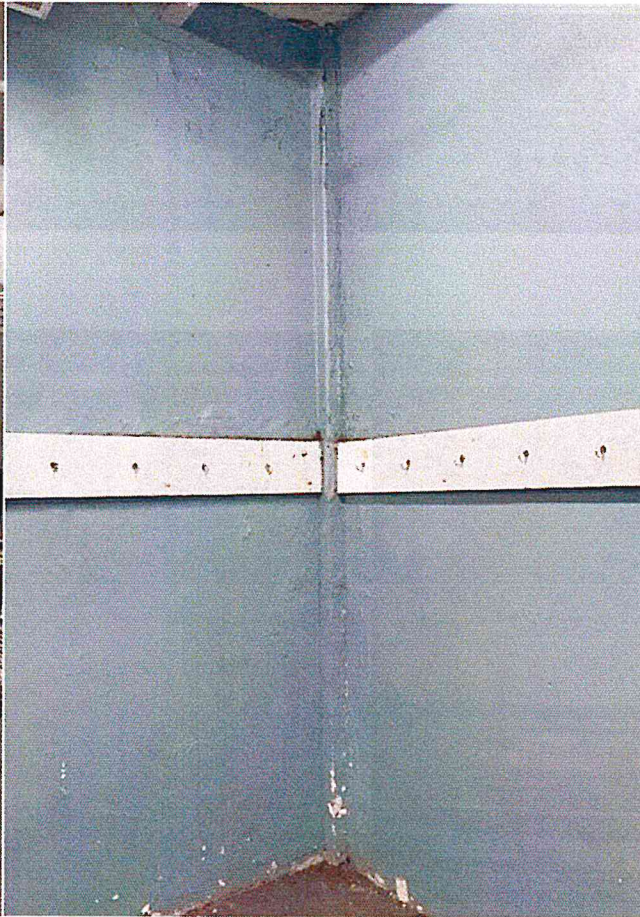




Tad Gormley Stadium Current Conditions



Tad Gormley Stadium Current Conditions



Tad Gormley Stadium Current Conditions

Pan American Stadium

Facility Details

- ✓ Opened in 1973
- ✓ Renovations completed in 2008

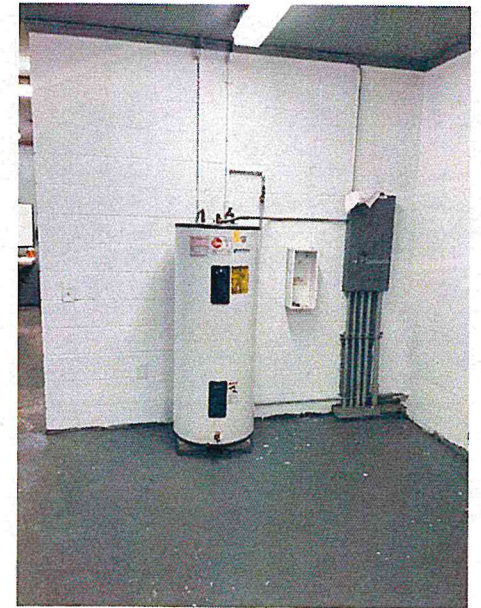
Program Elements

- ✓ 4500 bleachers (seated), 5000 general admission
- ✓ Artificial turf playing field
- ✓ 2 locker rooms
- ✓ Press box with seating for 15
- ✓ Electronic scoreboard and sound system

Usage

- ✓ Home to the New Orleans Jesters, as USL Premier Development League soccer team and multiple Hispanic leagues who play weekly including Islanos, Spartan, and Veterans Soccer
- ✓ Hosts high school football and soccer matches
- ✓ Holds LHSAA football games and matches
- ✓ The Allstate Sugar Bowl Collegiate Lacrosse Series was held at the stadium from 2011 to 2015
- ✓ The New Orleans Privateers club football team played at the stadium in 2012
- ✓ In 2015, the stadium hosted the high school rugby state championship
- ✓ Site of multiple movie shoots a year





Pan American Stadium Current Conditions



Pan American Stadium Current Conditions

Practice Track

Facility Details

- ✓ Originally built as the practice/auxiliary track for the 1992 U.S. Olympic Track & Field Trials for the 1992 Summer Olympics
- ✓ Renovations completed in 2006

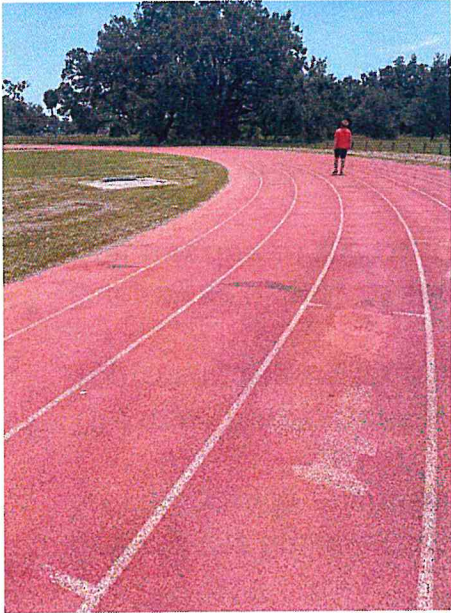
Program Elements

- ✓ 400-meter polyurethane track

Usage

- ✓ Open daily and used by the general public
- ✓ Utilized by track teams across the city, both high school and collegial, with most recent 2021 XC state champions, Jesuit Blue Jays
- ✓ Used during track and field meets held at Tad Gormley Stadium
- ✓ The track has been the finish line for many different road races
- ✓ Practice facility for the New Orleans Halfmoons rugby club





Practice Track Current Conditions

2024 – 2028 REQUEST OVERVIEW

- This project will support the renovation of the historic WPA-era Tad Gormley Stadium (built in 1936), Pan American Stadium (built in 1973), and the Practice Track (built in 1993), to restore deteriorating structures, turfs, and tracks to ensure safety and continued utilization by the community and New Orleans public and private schools from across the region.
- Beyond the facilities' historical context, they all play a critical role in youth development and are utilized year-round for community exercise, track and field events, sport activities, graduations, and other special events.
- The main renovations will support the restoration of the structural integrity, upgrading technology and amenities, and improving the visitor experience.
- Due to the quality of some amenities, such as the tracks, City Park has seen a decrease in rentals, with the notation that it is due to the conditions.
- The scope of work will begin with the plans and repair of the Practice and Tad Gormley tracks and facility improvements in year one and will be completed with the plans and repair of the Tad Gormley and Pan American fields and sound in year two.



Scope of Work

- **Turf**

Replacement of the synthetic turf fields with new polyethylene fibers and rubber base; repair and replace rock base as needed; inlaid lines for football & soccer and yard markings per High School standards

- **Track Resurfacing**

Resurfacing of the synthetic polyurethane track surface; red and blue color layout as well as striping, event markings and numbering stay constant

- **Lighting**

Replace older technology of metal halide for LED bulbs and drivers; upgrading allows significant energy savings and possibility of grant funding from Entergy utility company; newer technology of lighting also allows more pinpoint aiming to achieve necessary lumens and foot candles on the fields and tracks while also minimizing light spillage and glare into neighboring community

- **Pressbox Renovation**

Updating and refreshing to the carpeting, paint, HVAC systems, restrooms, lighting, etc.; installing WIFI and ethernet jacks throughout the pressbox; installation of a pantry space for catering and an internal PA system

- **Locker Room Renovation**

Updating and refreshing to the carpeting, paint, HVAC systems, restrooms, lighting, etc.; installing WIFI throughout the locker rooms; installation of locker systems along with stools or benches throughout the players and coach areas within; replacing and enlarging exterior doors making it easier for teams to exit

- **Public Restrooms**

Updating and refreshing the paint, exterior doors, lighting, toilets, urinals, partitions; addition of mirrors, sink basins and faucet changeouts; improving air flow and ventilation

- **Sound**

Replace and enhance the facility's sound system to incorporate new technology with full stadium coverage and additional locations; ability to tie into building alarm system and automatic annunciation; new system would minimize neighborhood sound pollution

- **Fire & Security**

Update of life safety systems including both fire and evacuation announcements tied into the facilities' audio systems

- **Elevator**

Funding the viability study to potentially add in an elevator to the Tad Gormley press box

Budget

Facility	Item	FY24	FY25
Tad Gormley	Turf		\$450,000.00
Pan American	Turf		\$325,000.00
Tad Gormley	Track	\$750,000.00	
Practice Facility	Track	\$500,000.00	
Tad Gormley	Pressbox	\$200,000.00	
Pan American	Pressbox	\$50,000.00	
Tad Gormley	Locker Rooms (3)	\$250,000.00	
Pan American	Locker Room (2)	\$100,000.00	
Tad Gormley	Public Restrooms	\$275,000.00	
Pan American	Public Restrooms	\$100,000.00	
Tad Gormley	Lighting	\$650,000.00	
Pan American	Lighting	\$350,000.00	
Practice Track	Lighting	\$150,000.00	
Tad Gormley	Sound		\$135,000.00
Pan American	Sound		\$75,000.00
Tad Gormley	Fire & Security	\$100,000.00	
Pan American	Fire & Security	\$50,000.00	
Tad Gormley	Elevator		\$20,000.00
SUB-TOTAL		\$3,525,000.00	\$1,005,000.00
Cost Escalation (15%)		\$528,750.00	\$150,750.00
Contingency (10%)		\$352,500.00	\$100,500.00
PROJECT YEAR TOTALs		\$4,406,250.00	\$1,256,250.00
COMPLETE PROJECT		\$5,662,500.00	



User Groups

Tad Gormley and Pan American Stadium serve local and out of state high schools and collegial teams in addition to auxiliary groups such as youth clubs and adult leagues. Below is a list of users, however not inclusive of all on an annual basis:

Spartans Soccer
Jesters
Islanos Soccer
Champions Soccer League
Veterans Soccer League
Isidore Newman
Dominican
Mt. Carmel
Willow School
Sacred Heart
Cabrini
McGehee
NOMMA
OTMAC
Play Nola
Soccer Shots

Brother Martin
Jesuit
Holy Cross
DeLaSalle
St. Aug
McMain
McDonogh35
John F. Kennedy
Warren Easton
Booker T. Washington
Douglass
Sophie B. Wright
Cohen
Tulane
Xavier
UNO

Community Input

" Jesuit, like so many other Orleans Parish schools, has been fortunate to be able to use City Park and especially Tad Gormley and Pan American Stadiums for practices and competitions for our athletic teams. Without the opportunity to use City Park facilities our athletic program would have had tremendous difficulty in developing and impacting the lives of our student-athletes. Jesuit has competed at both university and municipal stadiums in southeast Louisiana. Few, however, can provide the ambiance, tradition, and history of Tad Gormley Stadium. It would be my hope that improvements can be made to ensure that the wonderful experiences that have been shared by both student-athletes and spectators, alike, in the past may be experienced in the future."

- David A. Moreau, Athletic Director, Jesuit High School

"The facilities at Pan American and Ted Gormley stadiums are not up to par! I would like to see the locker rooms improved, the field turf and the lightning. Compared to the other facilities around the surrounding parishes and states where 10 years behind! They all have updated locker rooms, up to date turf without patches and excellent lighting." - **Lynaris Elpheage, Head Coach, John F. Kennedy High School (JFK)**

Contact Us

Cara Lambright

President and Chief Executive Officer

clambricht@nocp.org

Randy Odinet

Vice President and Chief Planning Officer

rodinet@nocp.org