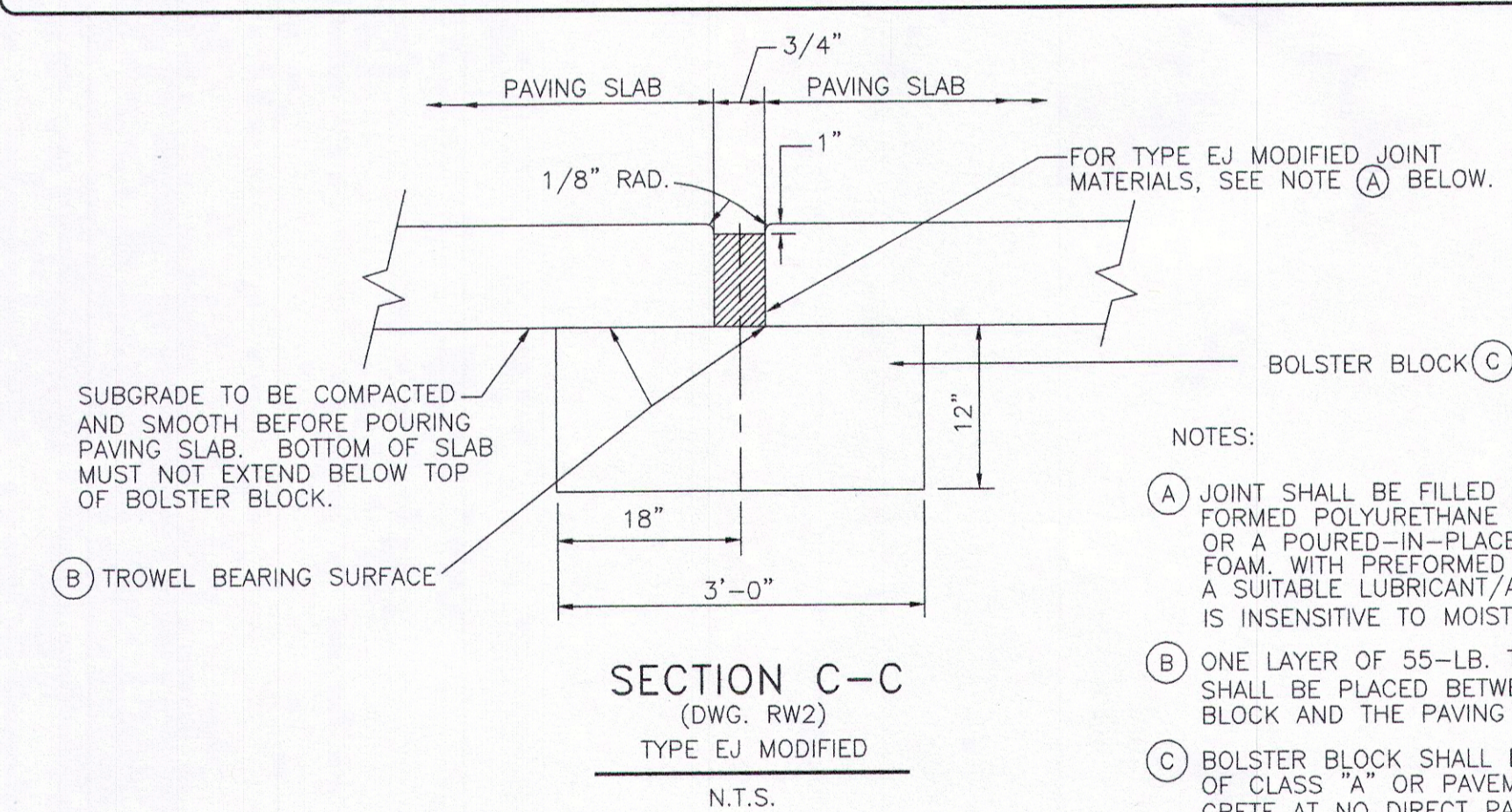
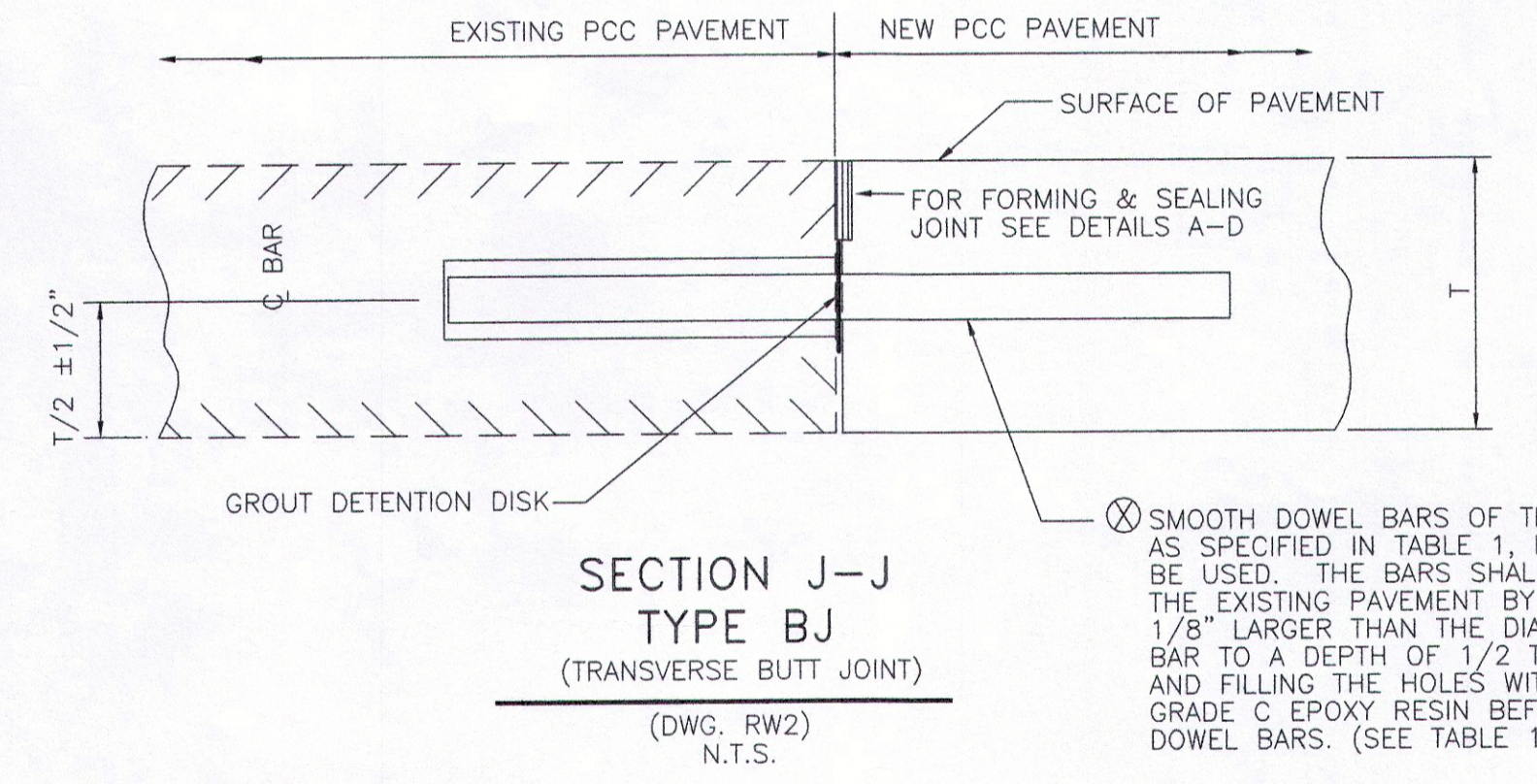
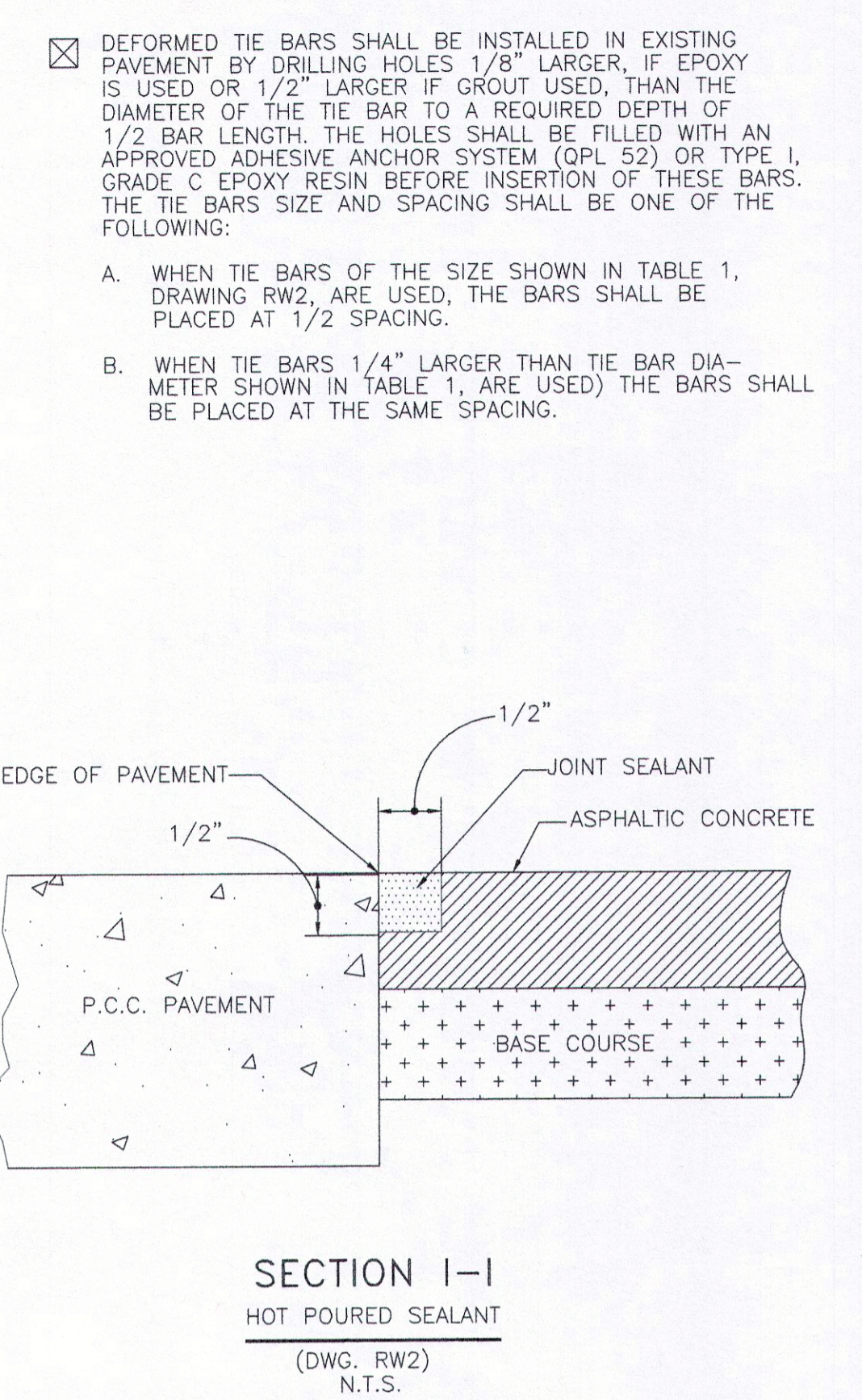
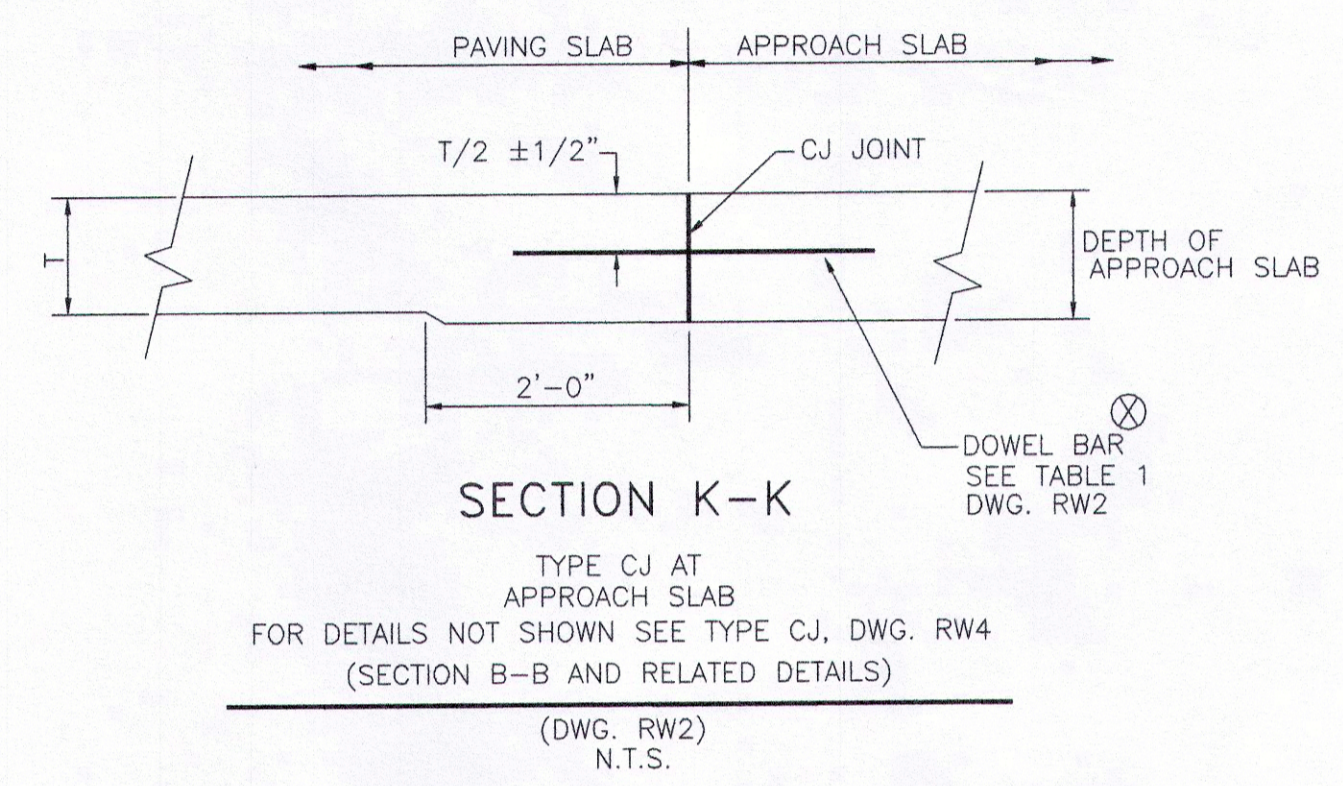
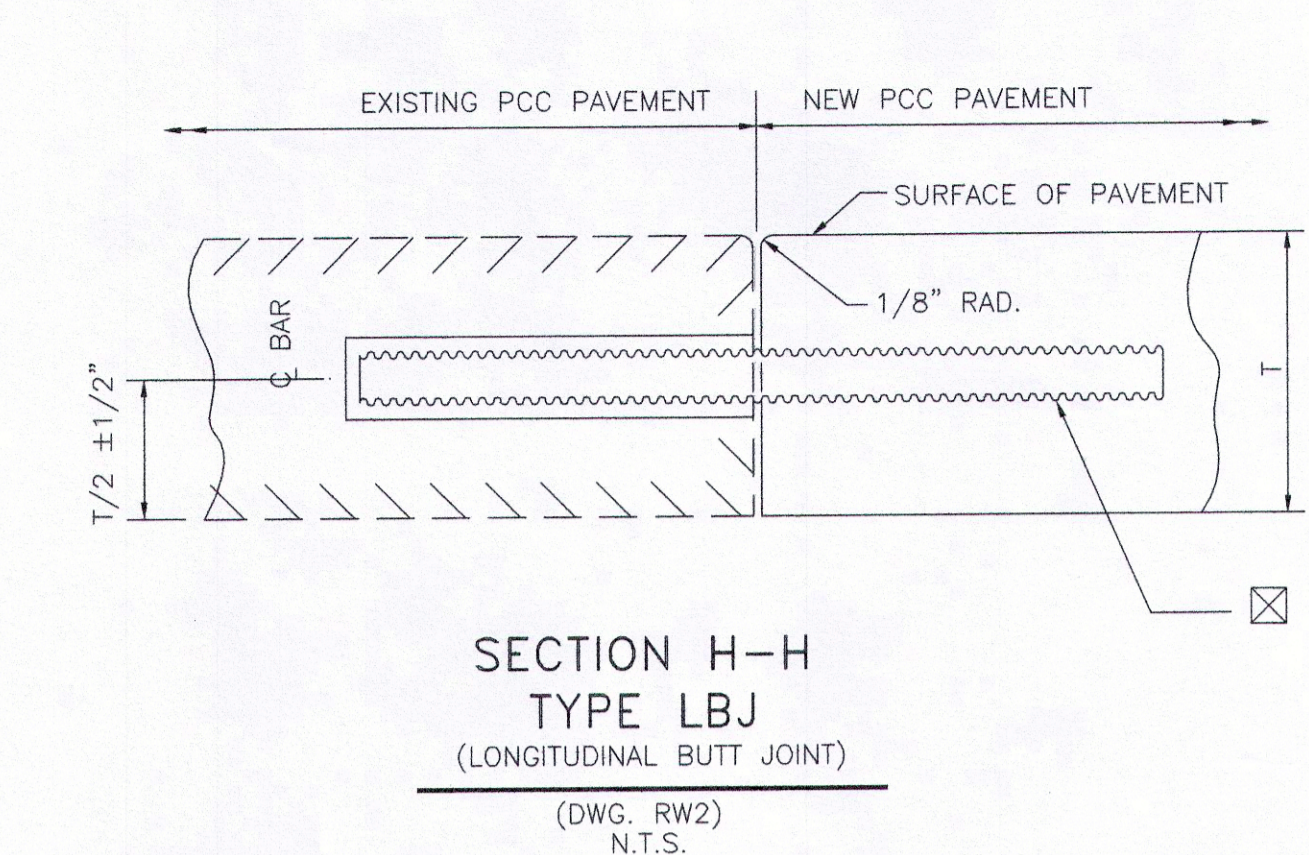
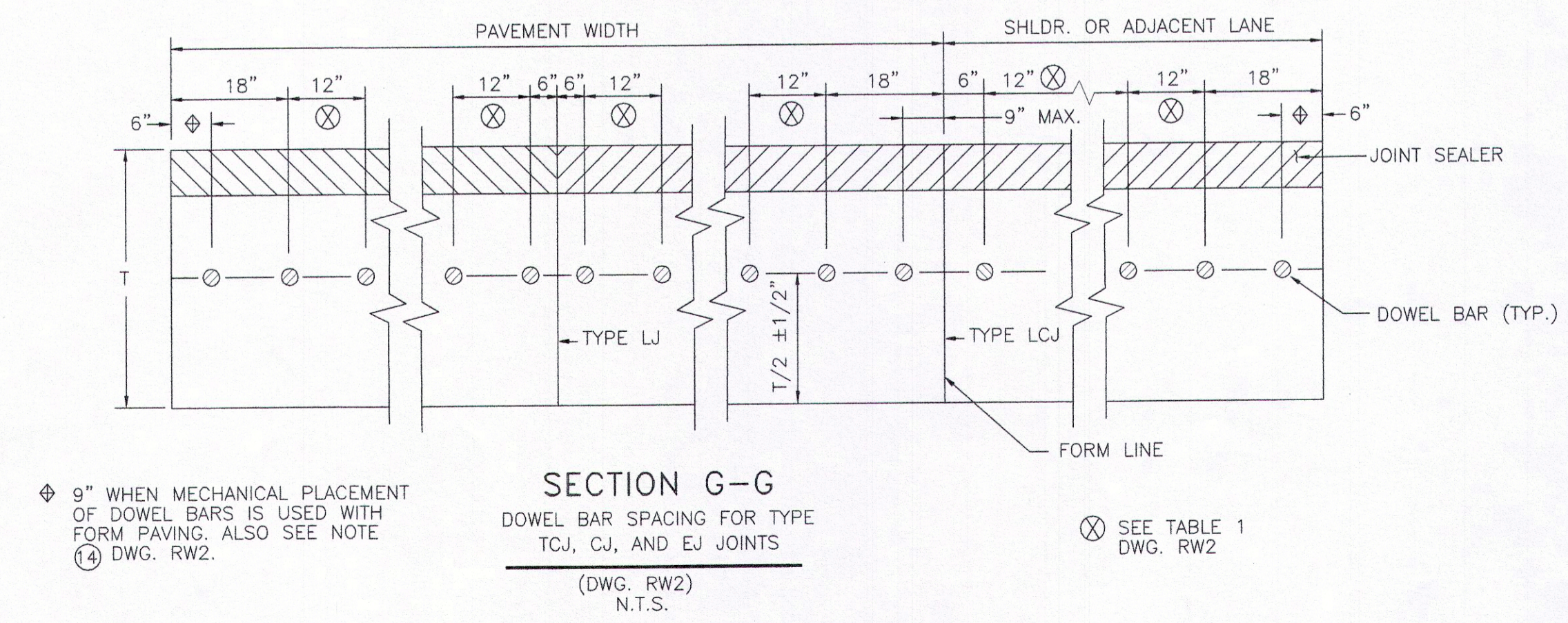
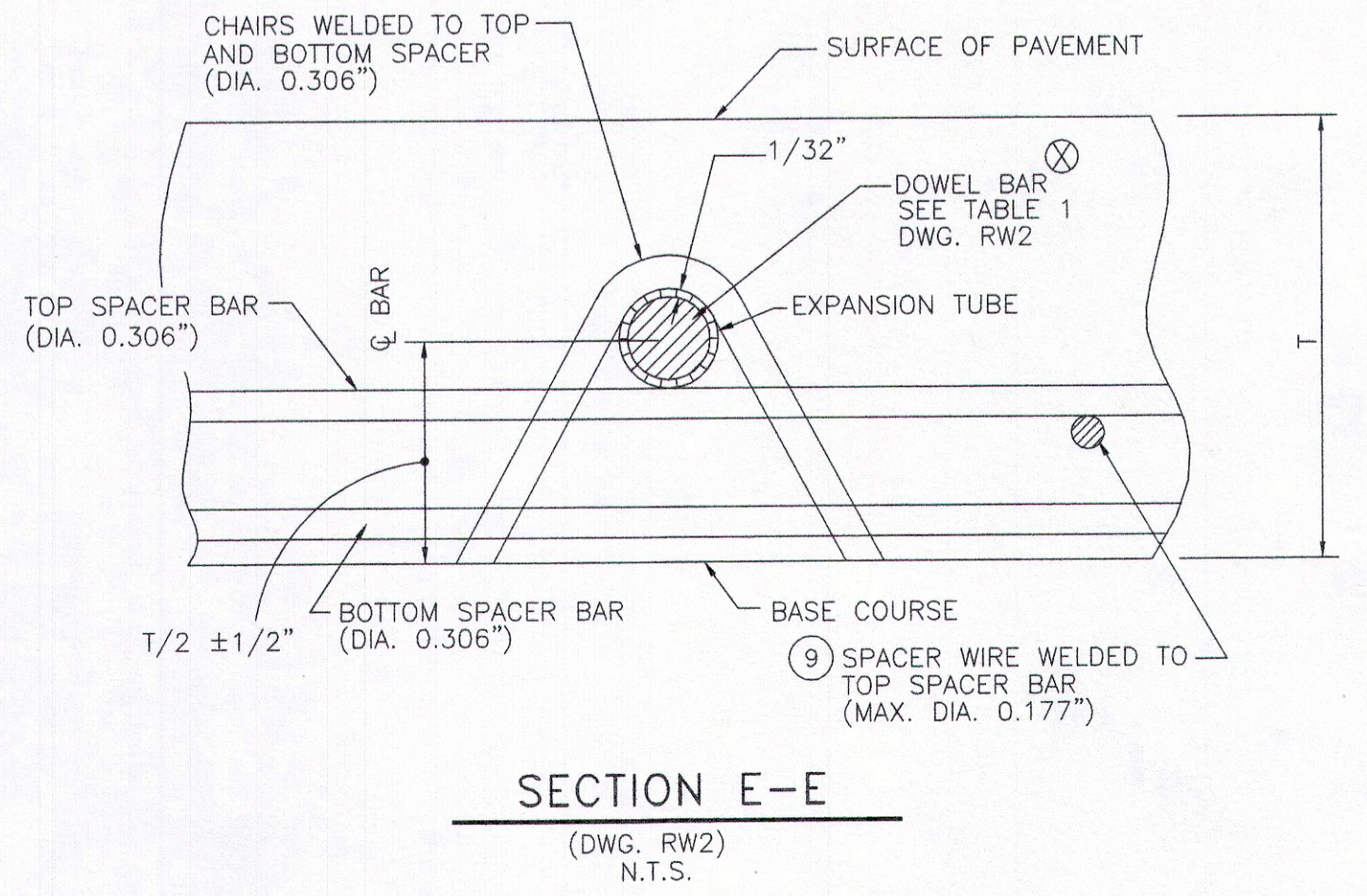
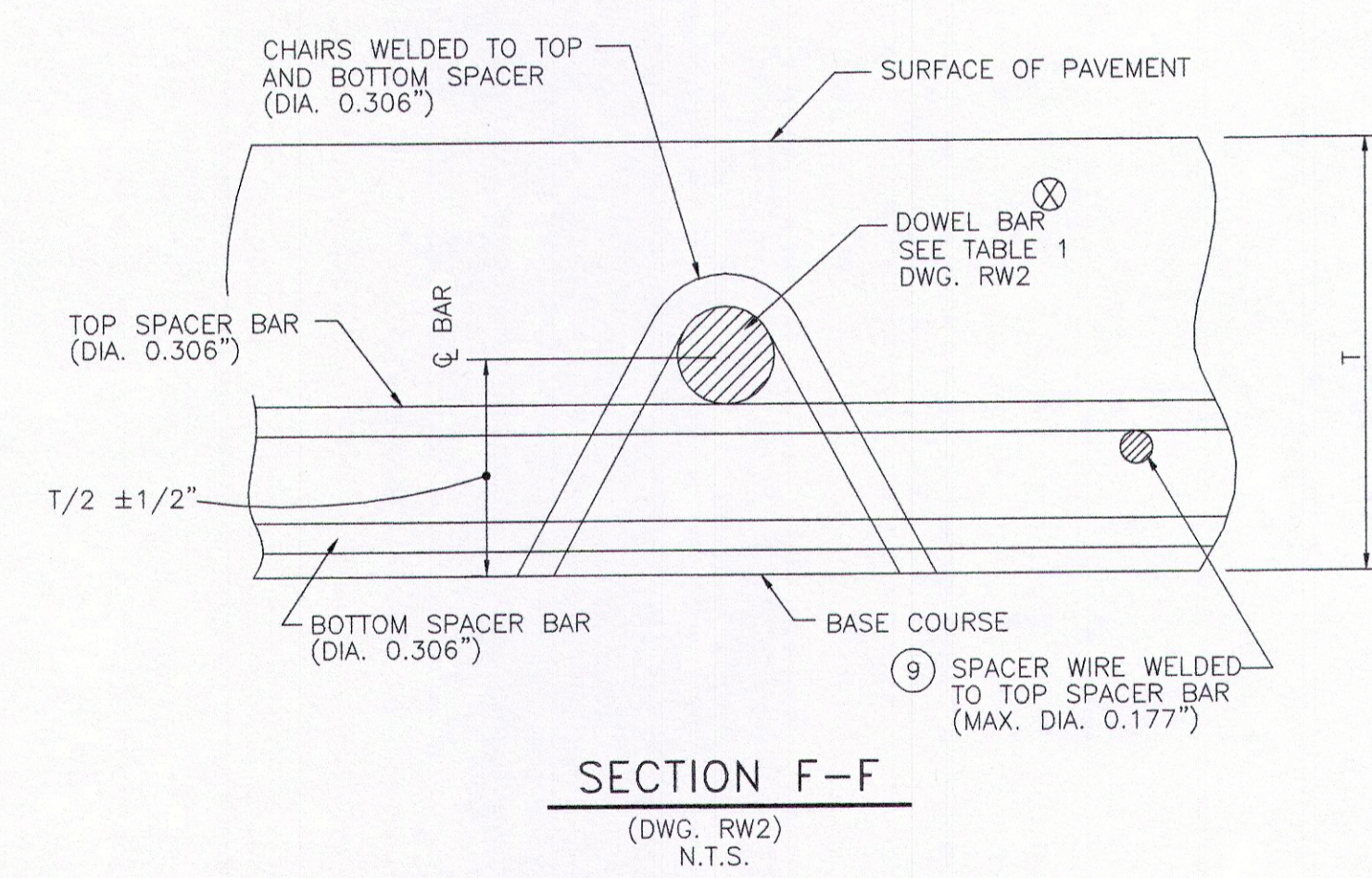


DETAILS "A" THRU "F"
 N.T.S.



- NOTES:**
- (A) JOINT SHALL BE FILLED WITH A PREFORMED POLYURETHANE FOAM TYPE FILLER OR A Poured-IN-PLACE POLYURETHANE FOAM WITH PREFORMED FILLER. USE A SUITABLE LUBRICANT/ADHESIVE THAT IS INSENSITIVE TO MOISTURE.
 - (B) ONE LAYER OF 55-LB. TAR PAPER SHALL BE PLACED BETWEEN THE BOLSTER BLOCK AND THE PAVING SLABS.
 - (C) BOLSTER BLOCK SHALL BE CONSTRUCTED OF CLASS "A" OR PAVEMENT TYPE CONCRETE AT NO DIRECT PAY.



9" WHEN MECHANICAL PLACEMENT OF DOWEL BARS IS USED WITH FORM PAVING, ALSO SEE NOTE (4) DWG. RW2.

SEE TABLE 1 DWG. RW2

	CITY OF NEW ORLEANS DEPARTMENT OF PUBLIC WORKS ENGINEERING DIVISION		
	TYPICAL ROADWAY SECTIONS FOR STREET CONSTRUCTION		
DRAWN BY: N. SCHNEIDER		REVIEWED BY: M.T. B.V. R.S. B.J. A.Y.	RECOMMENDED BY: NDT/aw NGUYEN D. PHAN, CHIEF ENGINEER
DATE: 2/3/2015		SCALE: AS NOTED	APPROVED: MARK D. JERNICK, DIRECTOR
THE SELECTION AND USE OF THESE DETAILS, WHILE DESIGNED IN ACCORDANCE WITH GENERALLY ACCEPTED ENGINEERING PRINCIPLES AND PRACTICES, IS THE SOLE RESPONSIBILITY OF THE USER AND SHOULD NOT BE USED WITHOUT CONSULTING A LOUISIANA REGISTERED PROFESSIONAL ENGINEER.			DRAWING No. RW3