

Capital Improvement Program

The City and Sewerage and Water Board of New Orleans are working together to implement an unprecedented capital improvement program to restore the City's damaged infrastructure. Using a combination of local and Federal funds, the **\$2.4B** program will be the most comprehensive that our region has seen in a generation. Work will include more than **200** individual projects and consist of repairing all or portions of about **400** miles of roadway. There will be several types of construction: Full Depth Reconstruction; Patch, Mill and Overlay; Patch Concrete; **Incidental Road Repairs**; Bridges; Non-Paving Incidentals; and Streetscapes.

Incidental Road Repairs

Incidental Road Repair projects are designed to remove damaged portions of the asphalt roadway and replace it with new smooth pavement that is free of rutting, dips and subsidence. In general, at the conclusion of construction you can expect the roadway to be smooth from curb-to-curb. The scope of work may include:

- Patching with asphalt
- Repairing damaged curbs, sidewalks and driveway aprons
- Installing [American with Disabilities Act](#)-compliant curb ramps at intersections.
- Repairing water, sewer, and/or drain lines



An Incidental Road Repair may include asphalt patching work; repairs to damaged curbs, sidewalks and driveway aprons; and installation of American with Disabilities Act-compliant curb ramps at intersections.

Scientific data is used to determine whether an Incidental Road Repair is needed. In some instances, the condition of your roadway was found to be in such poor condition that the only way to correct the roadway would be to completely remove the existing asphalt, replace the base material and re-pave the roadway. Justification for an Incidental Road Repair varies; however, what you can expect during construction is similar across the City.

What to Expect During Construction

A Incidental Road Repair project on your block should generate minimal impacts to your daily activities.

Construction Impacts

- Elevated noise levels from excavation, concrete placement, etc.
- Temporary closures: During construction, it is possible that there will be work in front of your home that will prevent parking in your driveway or possibly on your block.

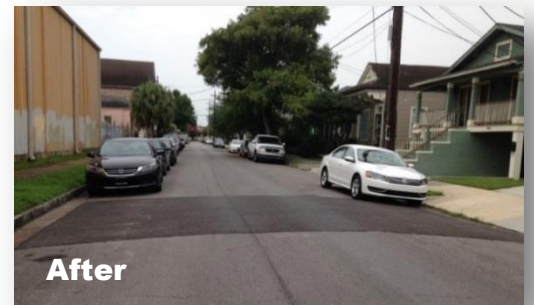
Construction Impacts continued...

- Traffic may be re-routed. You may find it helpful to visit roadwork.nola.gov to see where active construction projects are and avoid the areas if possible.
- Garbage and the US Postal services will continue throughout construction; however, depending on the conditions in front of your home, you may be asked to take your garbage and recycling bins to the end of the block on collection days.

Parking laws will continue to be enforced throughout construction. Avoid citations by becoming familiar with the City's [Parking 101 webpage](#). Please be mindful that construction impacts every person differently. While seeking an alternative to your regular route, you may encounter residents who are not used to traffic on their block. Be sure to follow the speed limit signage and be considerate of others when parking.

Efforts to Minimize Impacts

- Construction signage placed around the sites.
- Any temporary road closures or service interruptions will be communicated to the public ahead of schedule.
- Any changes to garbage and US Postal services will be communicated in advance.
- The City will continue to inform / educate the community about projects in advance of and throughout construction.



Funding and Partners

Funding sources for Incidental Road Repair projects vary. In some instances, the planned scope of work is funded by FEMA and only available because the damage to the sidewalk, driveway apron or curbs can be directly attributed to Hurricanes Katrina or Rita. In other instances, the project is funded by a voter-approved bond measure, or a federal grant such as the National Disaster Resilience Competition.

Timelines

The Capital Improvement Program is currently scheduled to last through 2024. For information about when construction is scheduled to begin on your block visit: roadwork.nola.gov. Please note that schedules are subject to change and weather delays. The duration of Incidental Road Repair projects vary by scope. In general, projects take about one-year from the time construction begins.

Questions about our Capital Improvement Program in your area may be directed to roadwork@nola.gov or 504.658.ROAD

