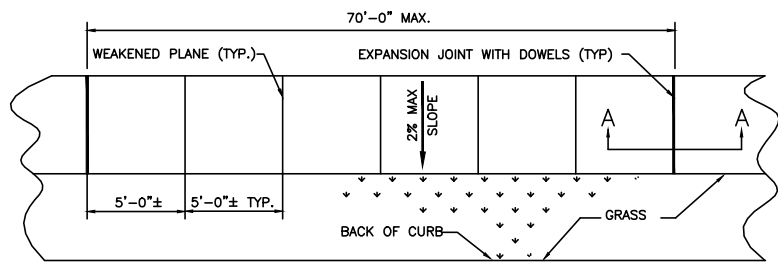
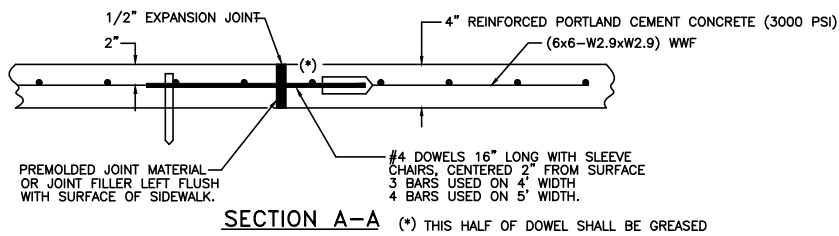


**PLAN PORTLAND CEMENT CONCRETE SIDEWALK PAVEMENT (FULL)**  
N.T.S.



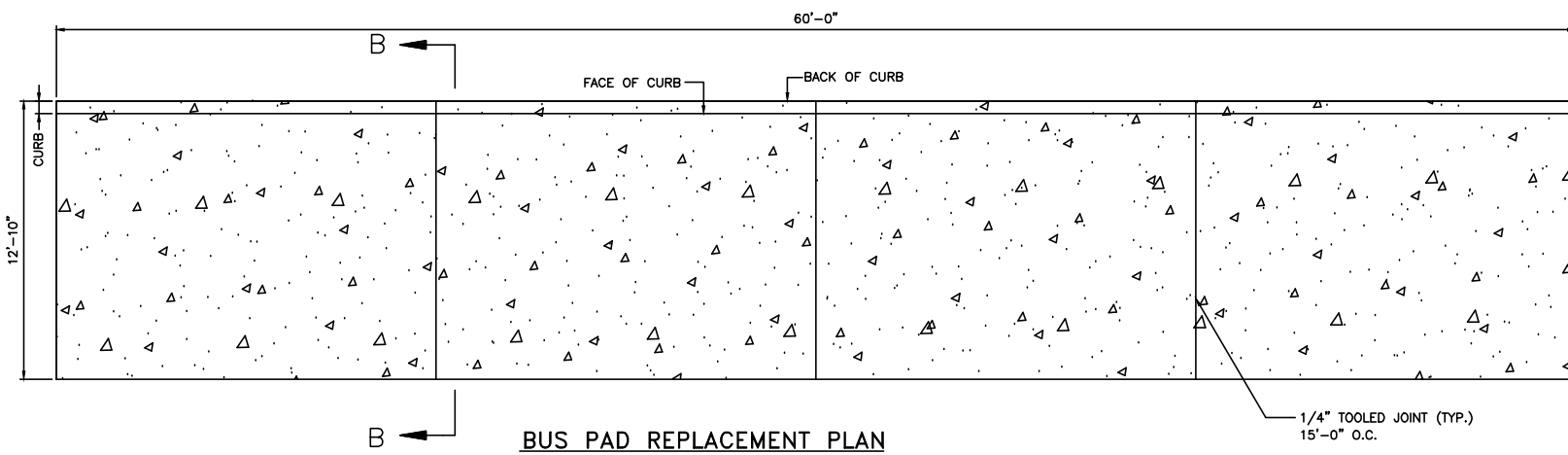
**PLAN PORTLAND CEMENT CONCRETE SIDEWALK PAVEMENT (RIBBON)**  
N.T.S.



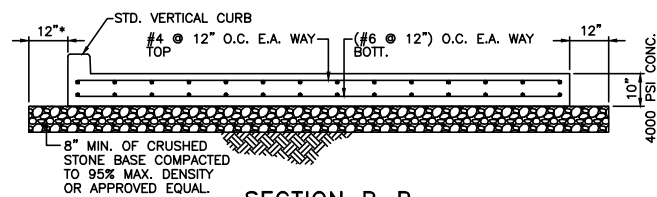
**SECTION A-A** (\*) THIS HALF OF DOWEL SHALL BE GREASED

**NOTE:**  
THE CONTRACTOR SHALL PROVIDE ONE INCH CONDUIT FROM JUNCTION BOX OR EQUIPMENT CABINET AND TERMINATE BELOW TOP OF PAVEMENT SO THAT IT DIRECTLY RECEIVES LOOP LEAD-IN WIRE.

**TYPICAL LOOP SAW-CUT LAYOUT**

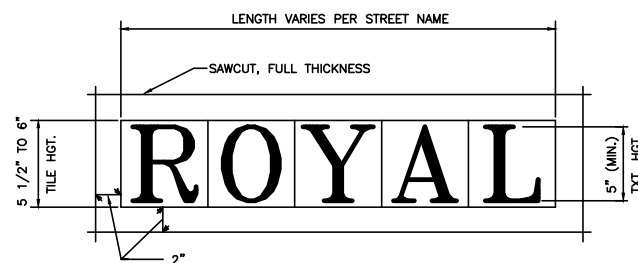


**BUS PAD REPLACEMENT PLAN**  
N.T.S.

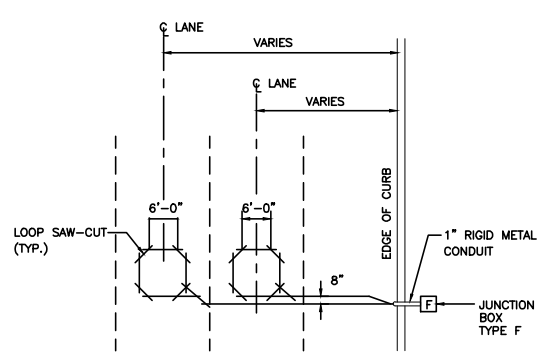


**SECTION B-B**  
N.T.S.

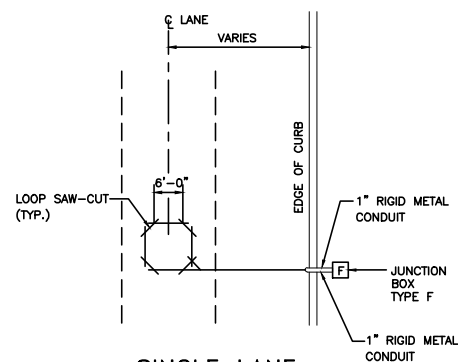
(\*) DELETE WITHIN DRIPLINE OF TREES



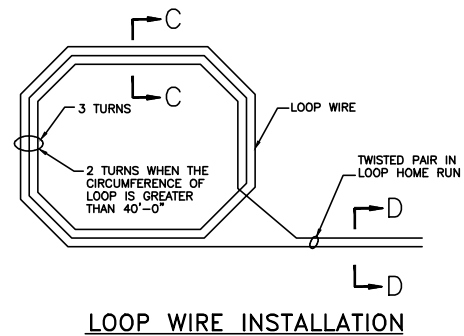
**STREET NAME TILE**  
N.T.S.



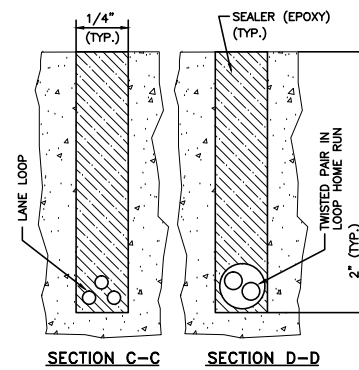
**DOUBLE LANE**



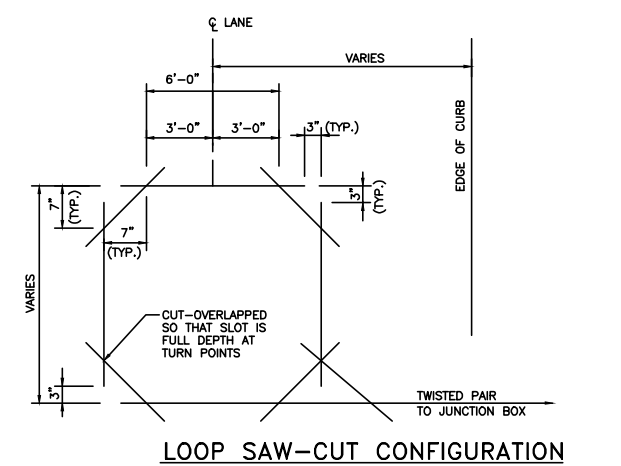
**SINGLE LANE**



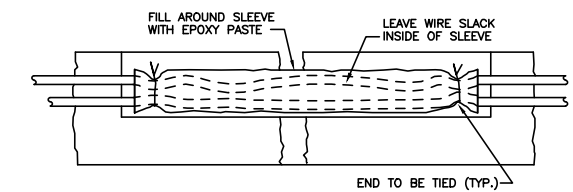
**LOOP WIRE INSTALLATION**



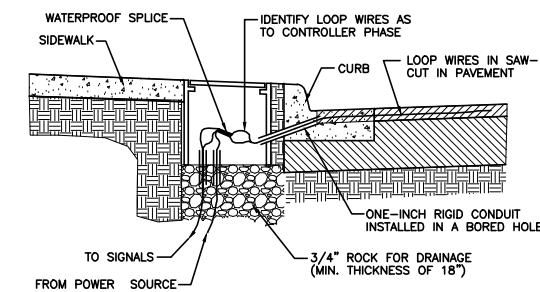
**SECTION C-C SECTION D-D**  
**VEHICLE LOOP INSTALLATION**



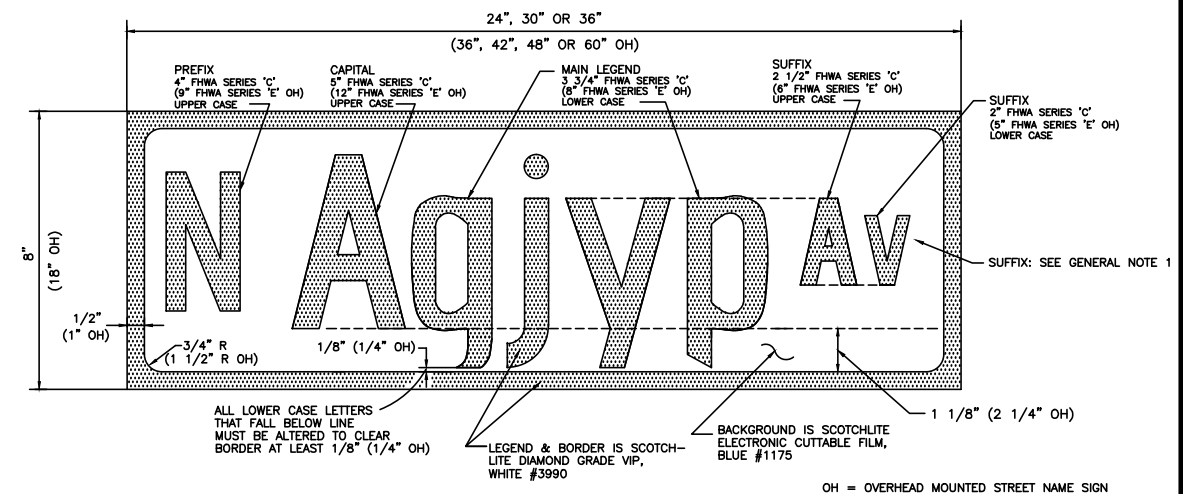
**LOOP SAW-CUT CONFIGURATION**



**SECTION OF PLASTIC SLEEAVING AT PAVEMENT JOINTS AND CRACKS**



**TYPICAL LOOP LEAD-IN INSTALLATION**



**STREET NAME SIGN - LEGEND & BORDER**  
N.T.S.

**GENERAL NOTES:**

- IF STREET NAME SUFFIX IS "STREET", SUFFIX IS OMITTED FROM SIGN.
- REPLACEMENT STREET NAME TILES SHALL BE SET IN A 1/4"-1/2" MORTAR BED WITH A 1/4" (MAX. SPACING) BETWEEN LETTERS.

	CITY OF NEW ORLEANS DEPARTMENT OF PUBLIC WORKS ENGINEERING DIVISION		
	MISCELLANEOUS DETAILS FOR STREET CONSTRUCTION		
DRAWN BY: N. SCHNEIDER	REVIEWED BY: M.T. B.V. R.S. A.Y. L.H.	RECOMMENDED BY: NOLAN D. PHAN, CHIEF ENGINEER	DRAWING No. <b>MC1</b>
DATE: 8-22-2014	SCALE: AS NOTED	APPROVED: MARK D. JERNIGAN, DIRECTOR	

THE SELECTION AND USE OF THESE DETAILS, WHILE DESIGNED IN ACCORDANCE WITH GENERALLY ACCEPTED ENGINEERING PRINCIPLES AND PRACTICES, IS THE SOLE RESPONSIBILITY OF THE USER AND SHOULD NOT BE USED WITHOUT CONSULTING A LOUISIANA REGISTERED PROFESSIONAL ENGINEER.