

Gentilly Resilience District Project at Dwyer Canal

Resilience Design Review Committee Meeting #1

October 25th, 2023



Dwyer
Canal

GENTILLY
Resilience
DISTRICT



GENTILLY
Resilience
DISTRICT



WELCOME

Thank you so much for joining us!

We will hold all questions and go through them during the Q&A period following the presentation. There will be an opportunity to ask questions at the end!

Presentation Speakers

Wilneicha Videau

Resilience Outreach
Specialist, Roadwork NOLA

Rodgerika Medrano

Senior Project Manager,
Stormwater & Green
Infrastructure

Chris Africh

Landscape Architect,
Dana Brown & Associates

Program Overview

The Gentilly Resilience District is a combination of efforts across Gentilly to reduce flooding, slow land subsidence, improve energy reliability, and encourage neighborhood revitalization.

Project Context

The Dwyer Canal Public Space Improvements plan builds upon the work completed under the Pontilly Stormwater Hazard Mitigation Grant Program (HMPG) Project completed back in 2021. This project uses an existing canal to provide locally accessible recreational and education opportunities.

Project Area

The project area is located between France Road and the Norfolk Railroad. The north/south extents are the residential homes along Mithra St. and Dreux Ave.



Project Goals

New Orleans' goal is to work to connect physical resilience with social resilience by providing spaces for recreation, increasing environmental awareness, improving quality of life, and promoting environmental justice.



Ecosystem diversity



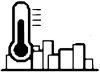
Interpretive signage



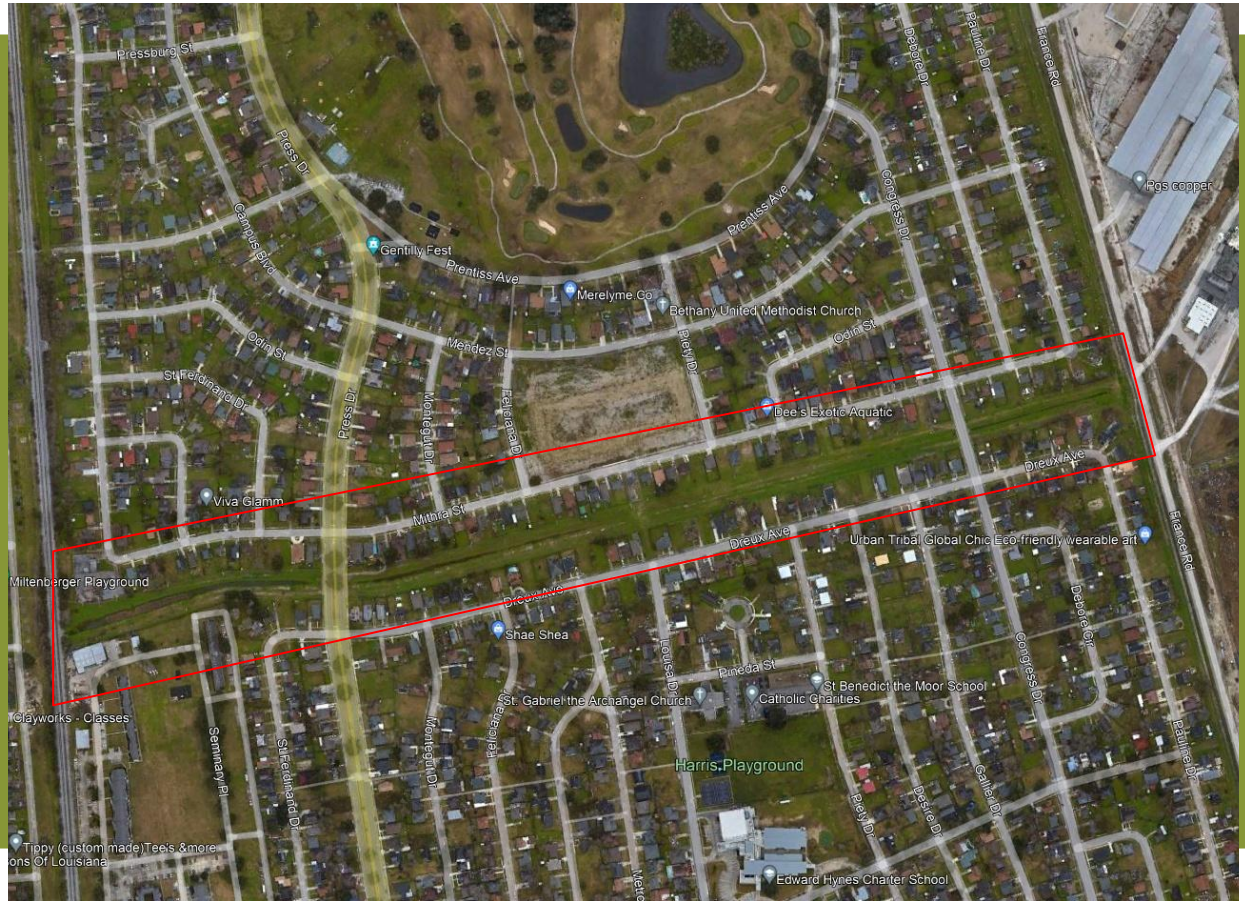
Nature walks



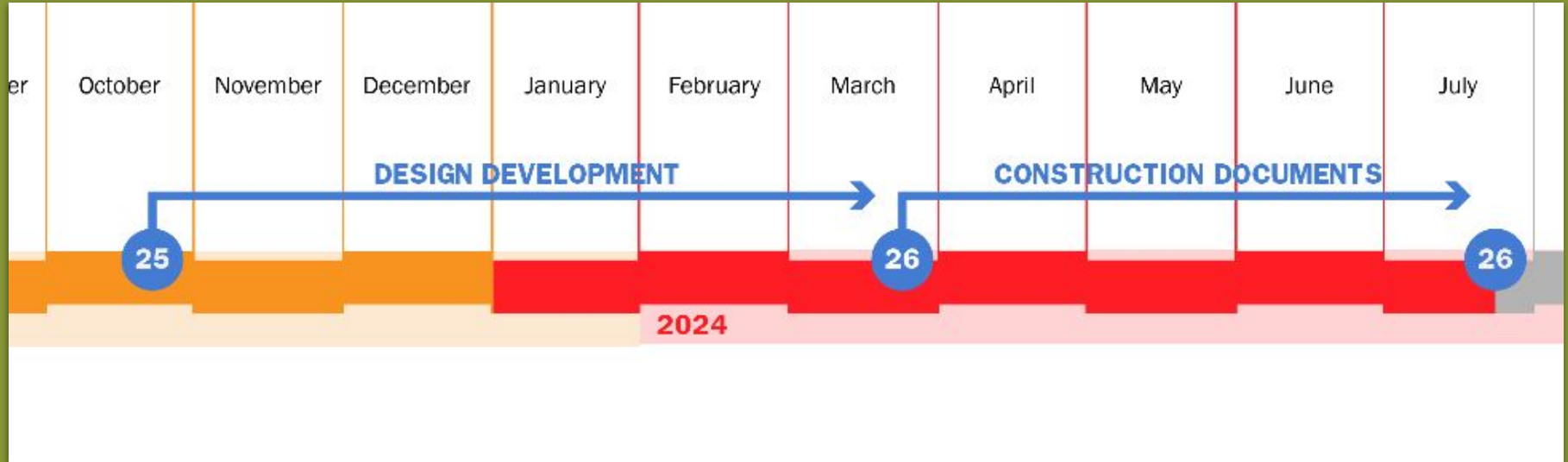
Improved tree canopy



Access to recreation



Project Schedule



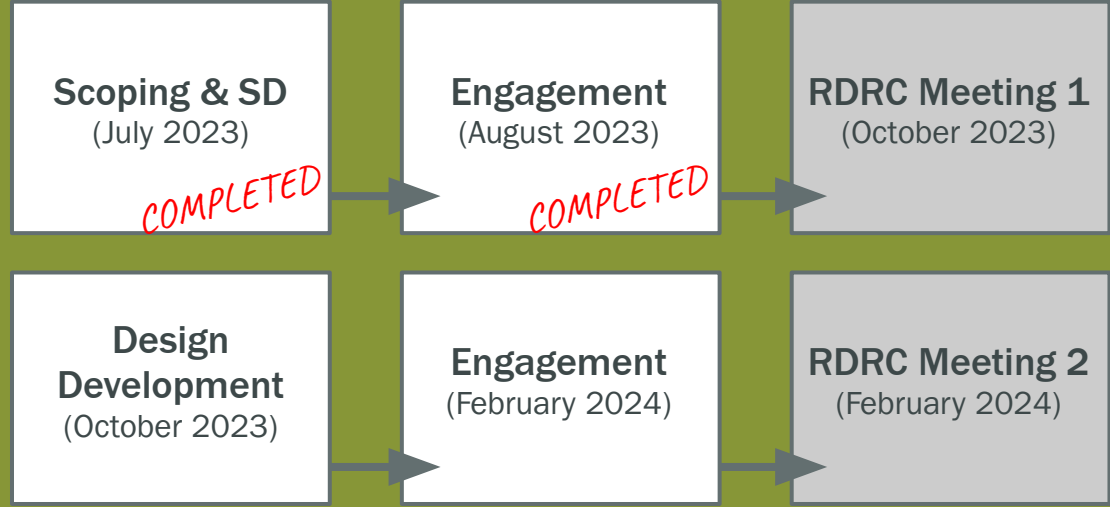
Next Steps

The design development phase will continue to locate the bridge footings and final pricing on the span and configuration. The pedestrian lighting spacing will be adjusted for uniformity and security along the trail as expressed in the public meeting.

Additional art and informational signage locations will be planned for. Additional security measures and methods for protections to the proposed improvements will be studied.

Access will be studied, however altering existing access may interfere with utility companies. These companies will provide input.

The meadow/wildflower area will be further designed as a method of increased slope stabilization and wildlife diversity.



Neighborhood History

Pontilly was an area of opportunity for African American home-ownership post war housing shortage in 1950's.

Separate but equal neighborhoods lead to the north (Pontchartrain Park) and south (Gentilly Woods) completely separated.

Dwyer Canal was the physical barrier.

In the early 1960' segregation ended as a result of the the Civil Right's Movement.

Once segregation ended "White-Flight" occurred from Gentilly Woods.

By the 1980's both neighborhoods were predominately African American resulting in Press and Congress Dr. connecting over Dwyer.



Project History

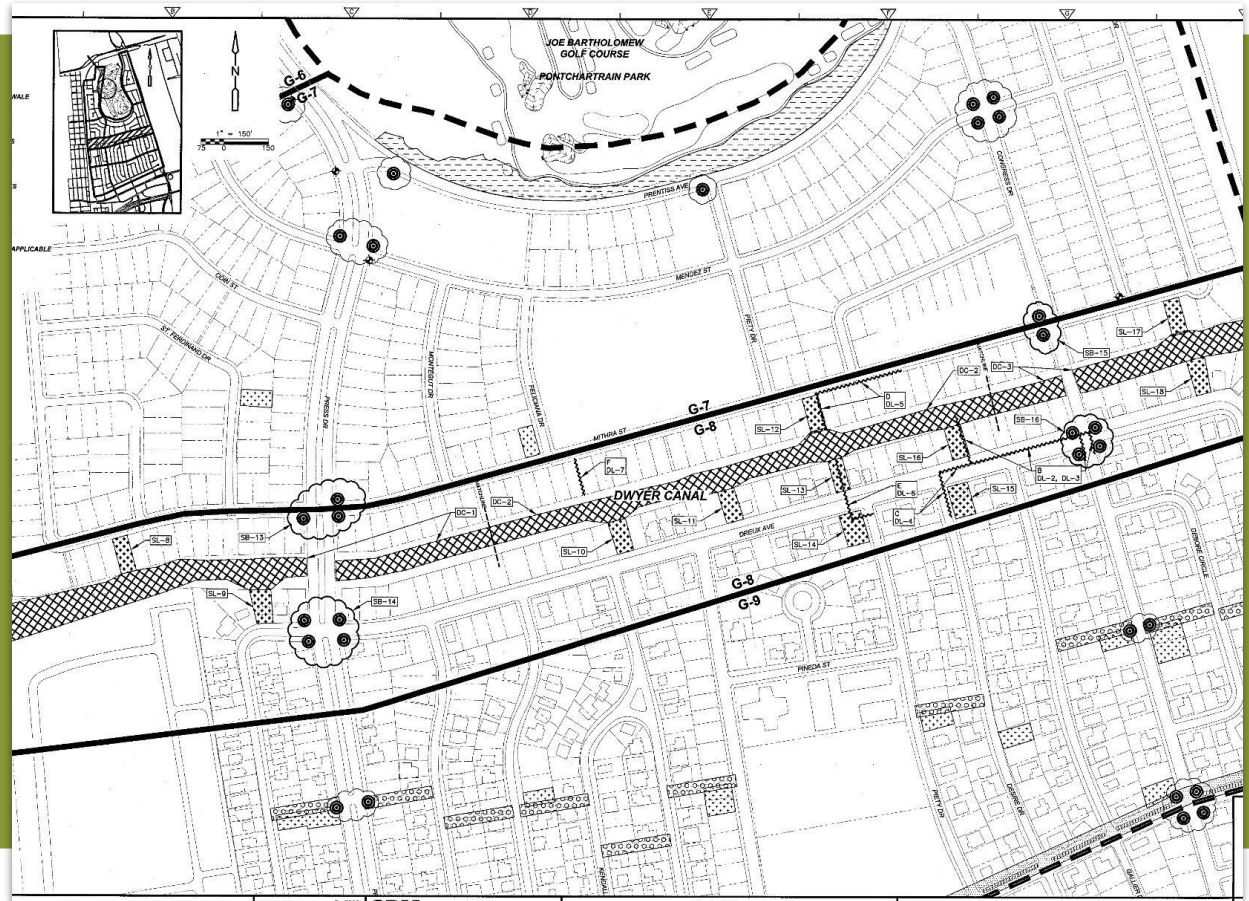
Pontilly Stormwater Hazard Mitigation Grant Program (HMGP) Project in 2021.

A twelve year long process from initial concept ideas to final implementation.

Many drainage improvements throughout the entire area both above and below ground.

Several public meetings were held during the design process.

The funding for that project limited the types of improvements despite public requests for amenities.



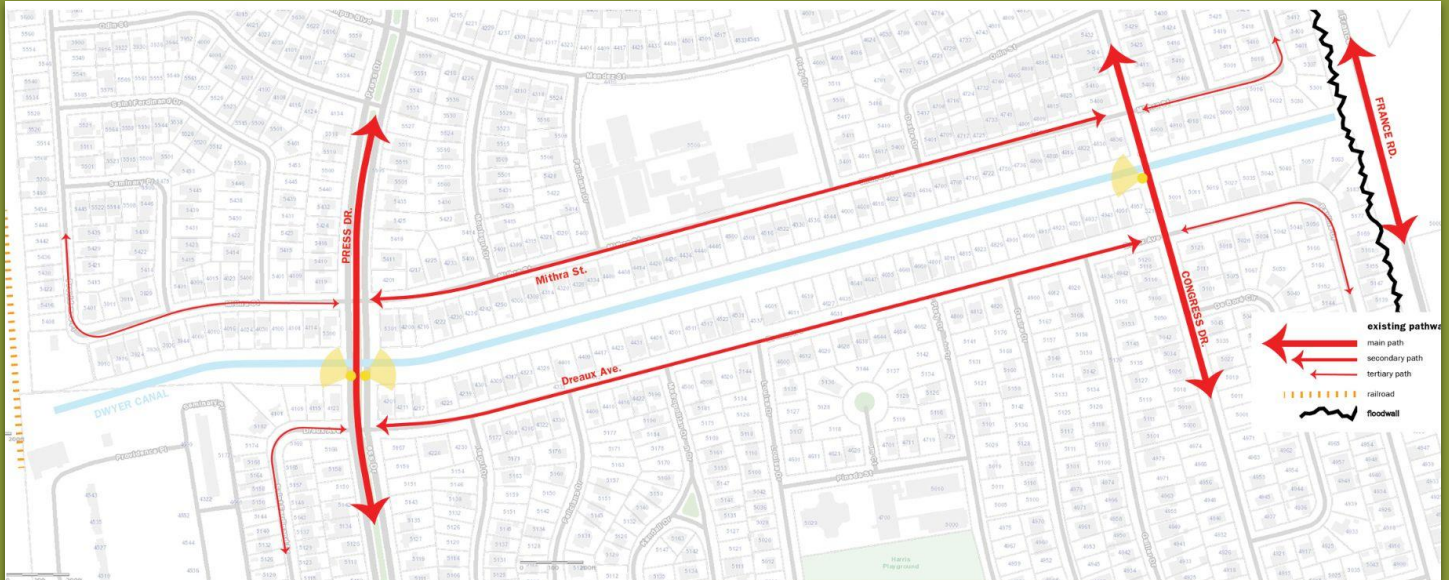
Accessibility

Dwyer Canal is the physical barrier between Pontchartrain Park and Gentilly Woods.

Only two north/south connections across Dwyer.

Press Dr. & Congress Dr. both have sidewalks

Mithra St. & Dreux Ave. both have sidewalks.



Adjacent Lots

Dwyer Canal abuts residential homes to the north and south.

12 of these lots abutting Dwyer Canal are City owned.

These city owned lots can be utilized to provide accesses to Dwyer Canal.

North and south lot pairings are ideal for a new physical connection.



Walkability

Dwyer Canal is the physical barrier between Pontchartrain Park and Gentilly Woods.

Only two north/south connections across Dwyer Canal.

These city owned lots can be utilized to provide accesses to Dwyer Canal.

Two potential lot pairings allow for two potential pedestrian bridges.



Right-of-way

The centerline for the waterway is not located in the middle of the Dwyer Canal's right-of-way.

The south bank of Dwyer is approximately 64% wider.



Utilities

Above ground electric poles run the entire east/west length on both the north and south banks

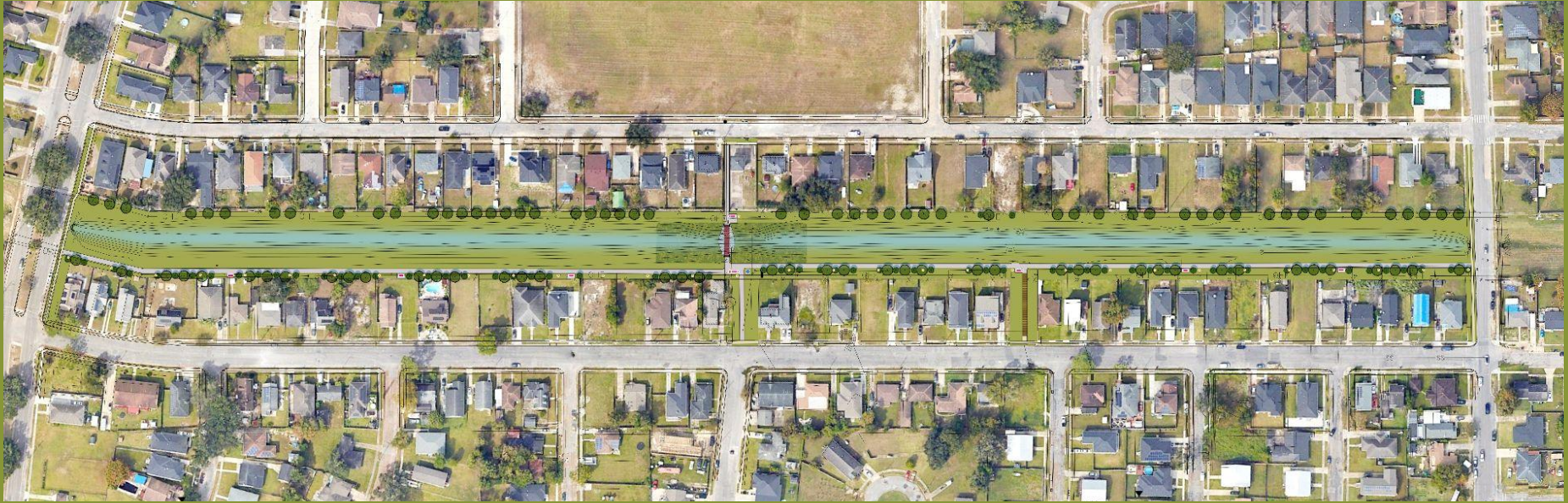
2 Sewerage & Waterboard lots have the majority of north/south utilities.

The east half has more buried utilities than the west

A critical water main runs along the south bank.







Thank you for your participation!

Please take the time to answer a few survey questions.

For more information visit roadwork.nola.gov, send e-mail to roadwork@nola.gov
or call 504.658.ROAD (7623)

October 25th, 2023



Dwyer
Canal

GENTILLY
Resilience
DISTRICT



GENTILLY
Resilience
DISTRICT

