

# Background

## Existing Conditions

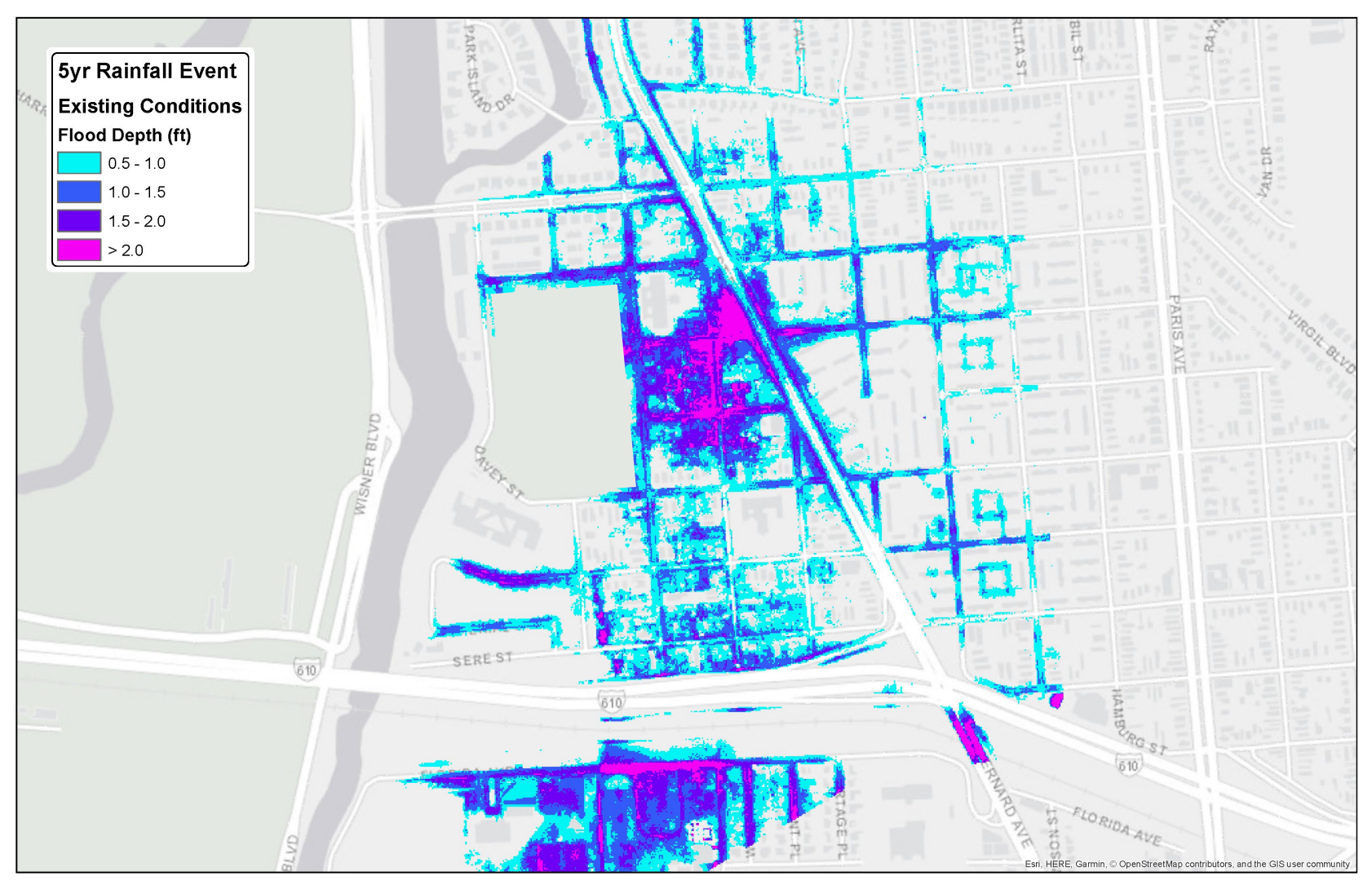
- Infrastructure needs addressing
- Pumping and low infiltration has led to high subsidence rates
- Entire neighborhood drains to Drainage Pump Station (DPS) #3
- Community experiences frequent flooding



Images Courtesy of ISeeChange

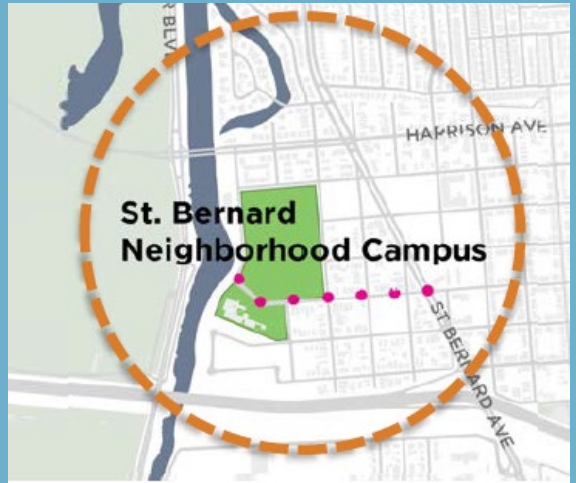
# Background

## Flooding (5-year Storm)

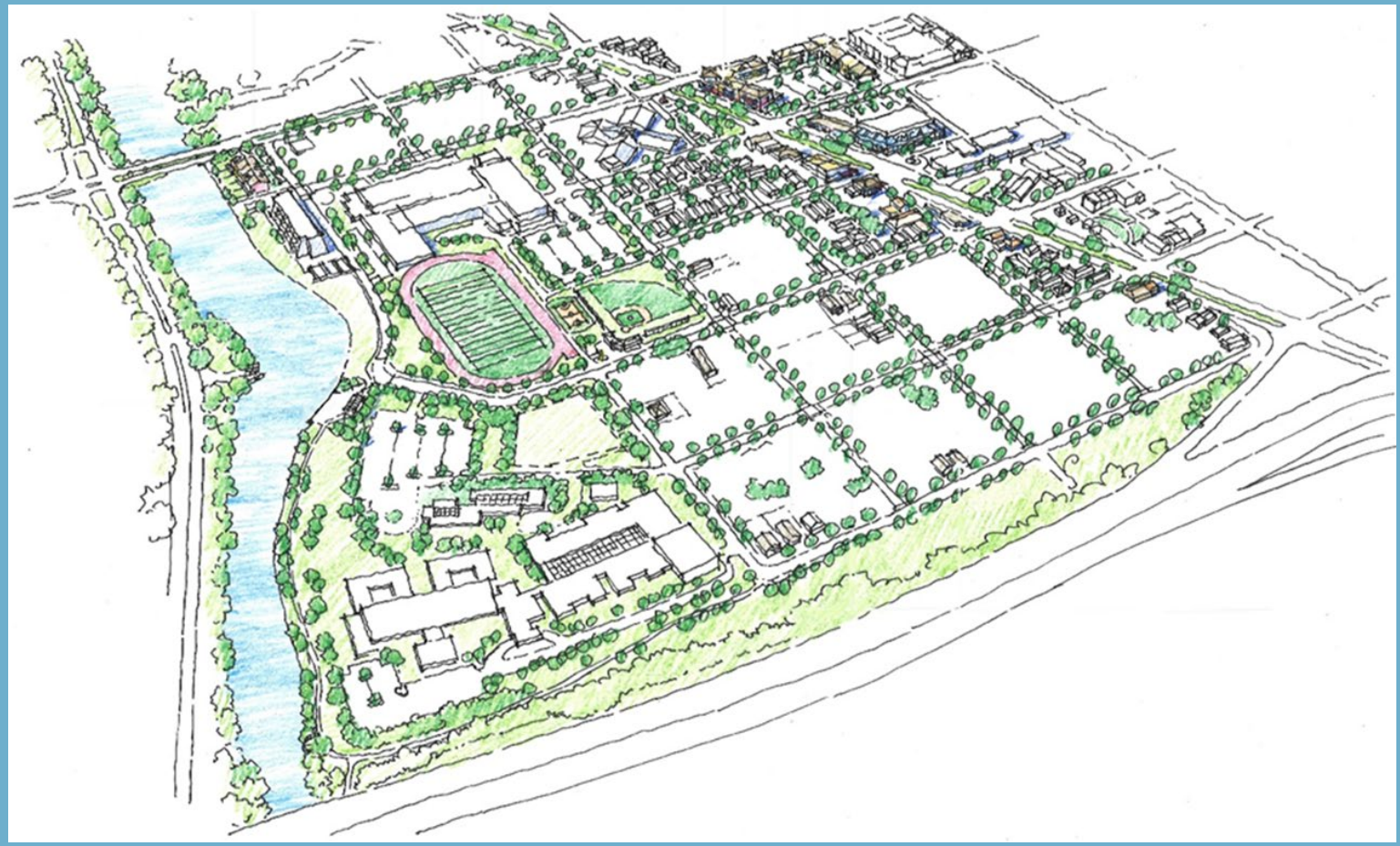


# Background

## Early Visions



St. Bernard Neighborhood Project Scoping Area



St. Bernard Neighborhood Conceptual Rendering



St. Bernard Neighborhood Street Conceptual Rendering

# Project Goals



## Urban Water

1. Address flooding
2. Promote infiltration and groundwater recharge



## Ecology

1. Increase biodiversity
2. Plant more trees, shrubs & flowers



## Infrastructure

1. Create complete street corridors



## Economics

1. Drive economic growth through reinvestment
2. Reduce flood management risk



## Recreation

1. Provide access to parks
2. Provide active and passive recreation



## Public Health

1. Encourage people to exercise more



## Urban Heat Mitigation

1. Create shade
2. Reduce and monitor heat island effect



## Community

1. Create community destinations for neighborhood gatherings
2. Provide interactive educational opportunities

# Public Engagement

Thanks for your input!



Gentilly Fest 2018



60% Design Update 2019



Kickoff Event 2023

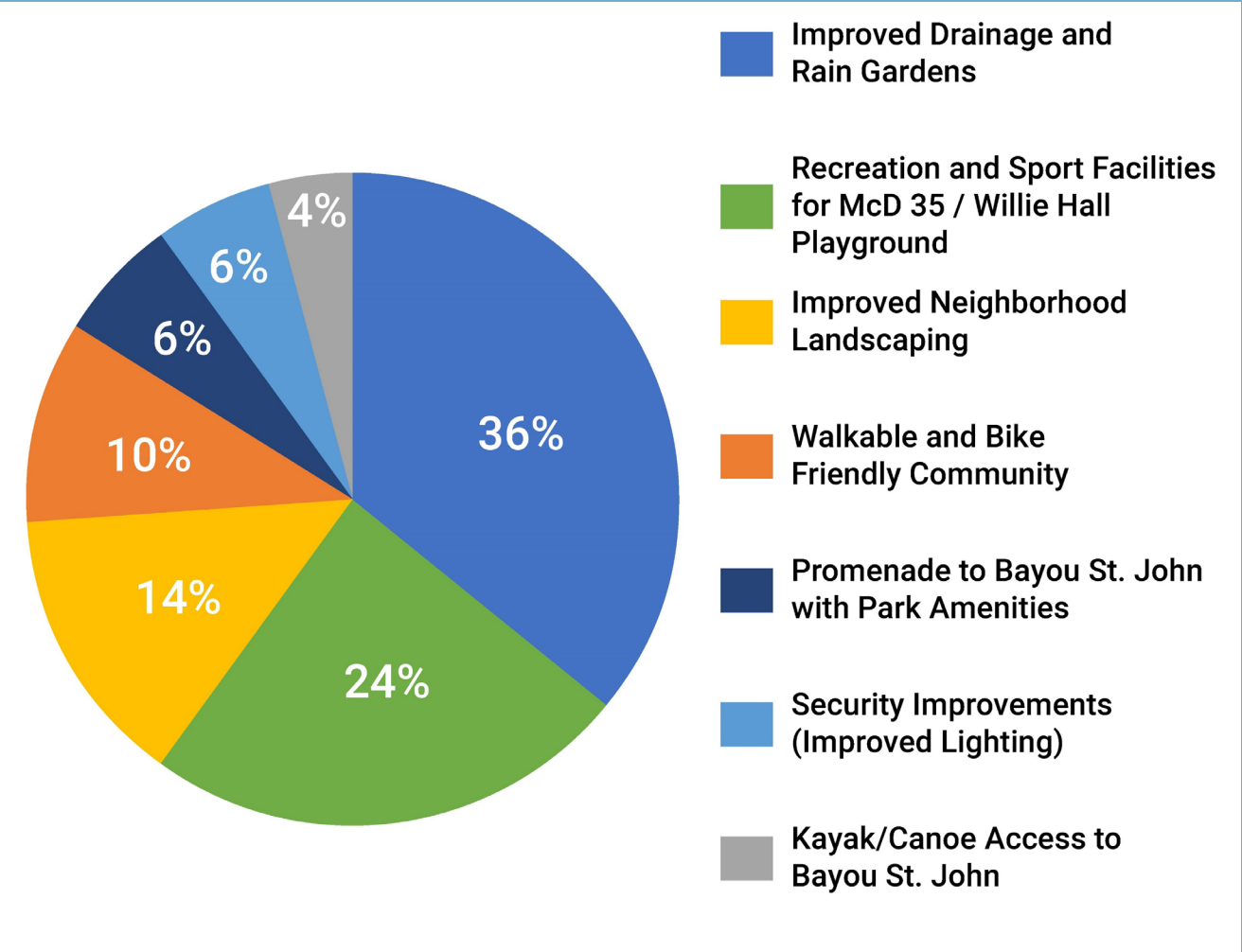


Vision Workshop 2018

# Public Engagement

## What We Heard

1. Improve Drainage
2. Sports Facilities
3. Improve Neighborhood Landscaping
4. Provide Walkable and Bike Friendly Area
5. Provide Park Amenities
6. Security Improvements
7. Kayak/Canoe Access to Bayou St. John



# Phase III

## Park and Green Infrastructure

### Neighborhood Improvements

- Raingardens
- Road Repairs

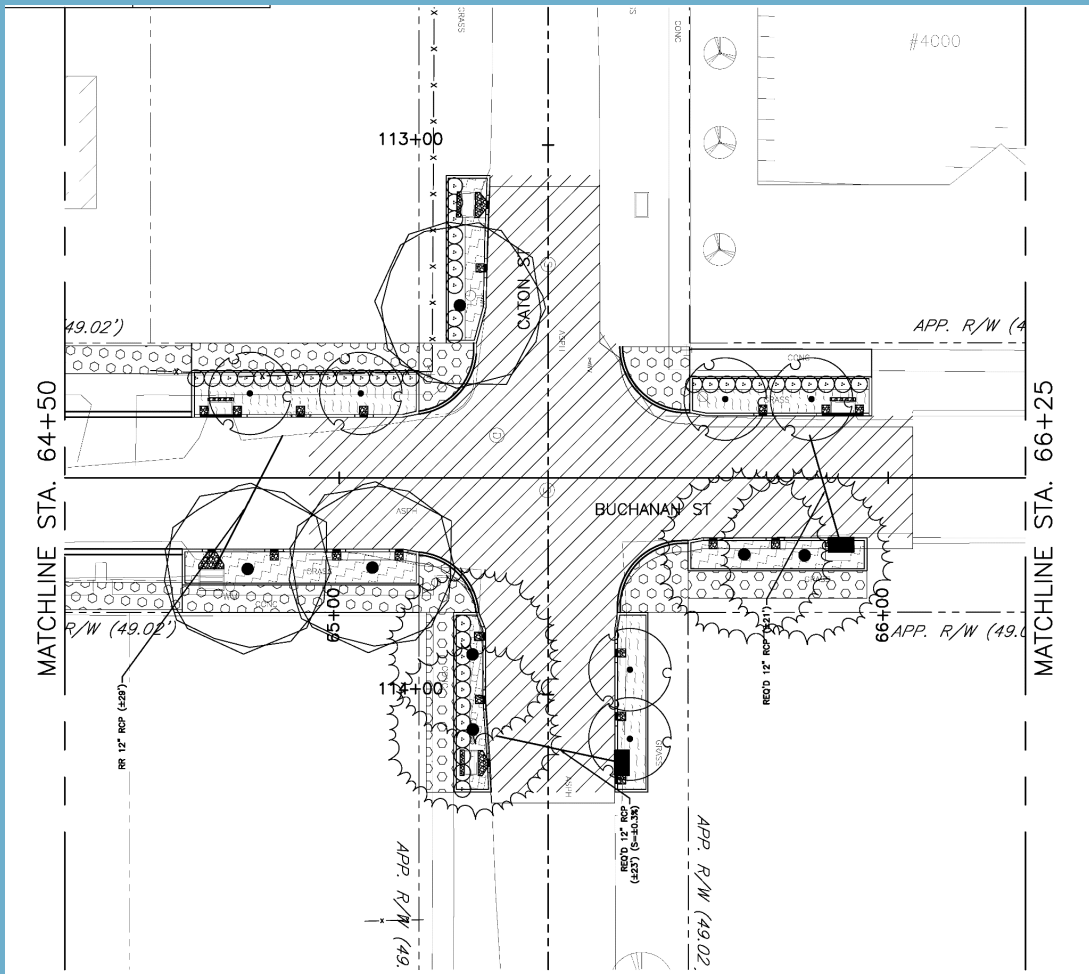
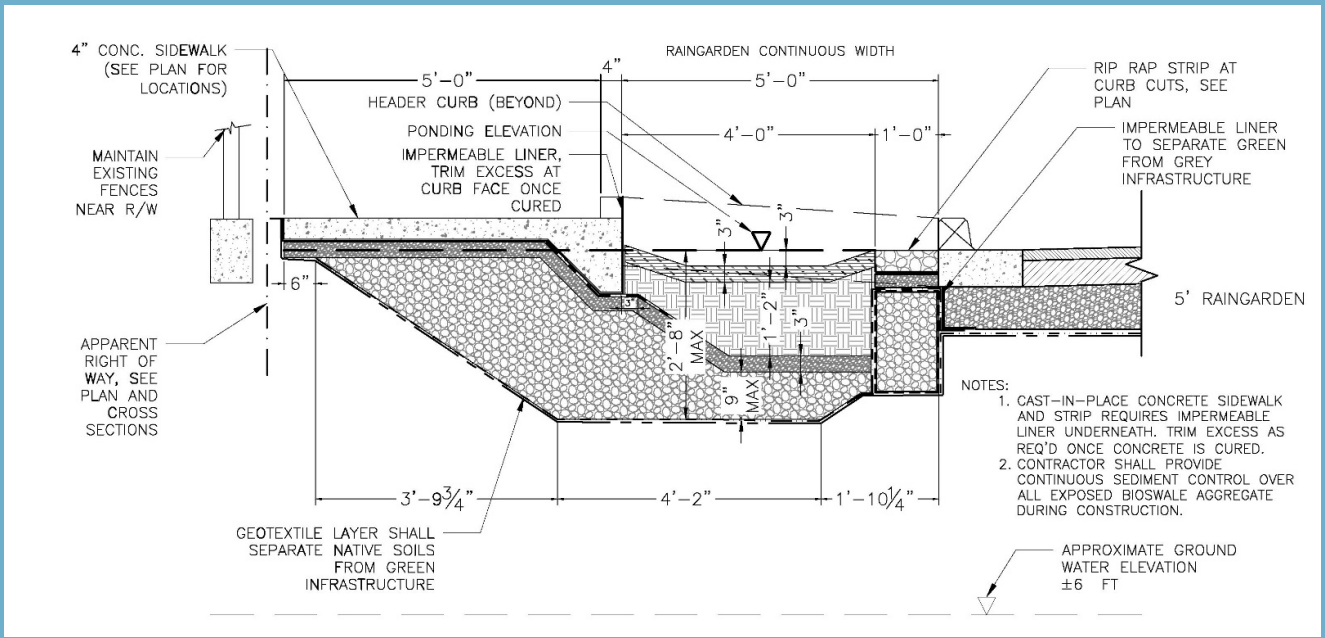
### Bayou St. John Park

- Playground
- Shade Structure
- Boardwalk
- Walking Trail
- Kayak/Canoe Launch



# Phase III

## Typical Raingarden Bump Outs





# Phase III

## Raingarden Bump Outs

- Improves water quality, promotes transpiration, and enhances the streetscape
- Provides shorter crossing distance for pedestrians, enhancing safety



# Phase III – Park Improvements

## St Bernard Park + Activity Area



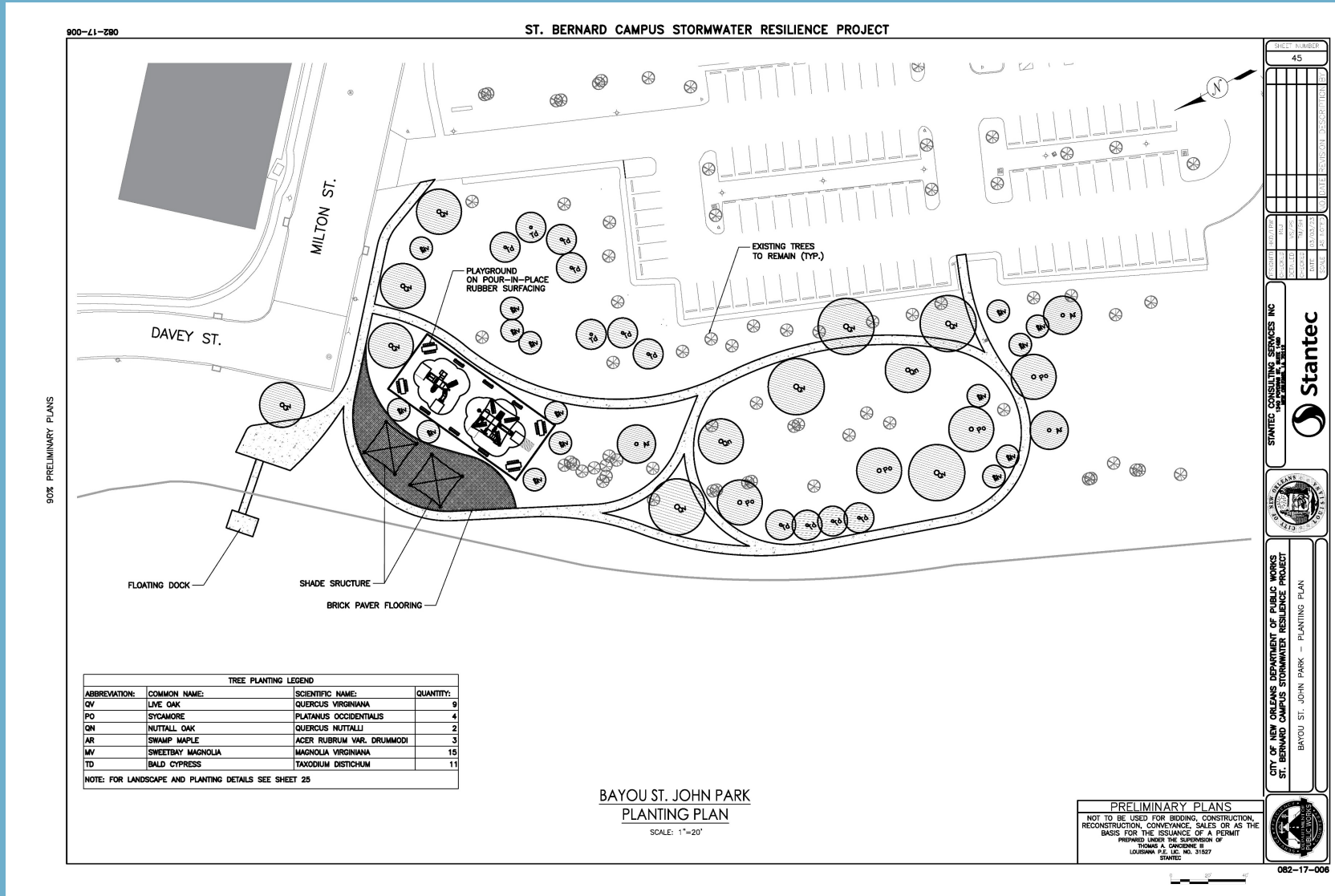


# Phase III

## Park Improvements



# Phase III – Park Improvements



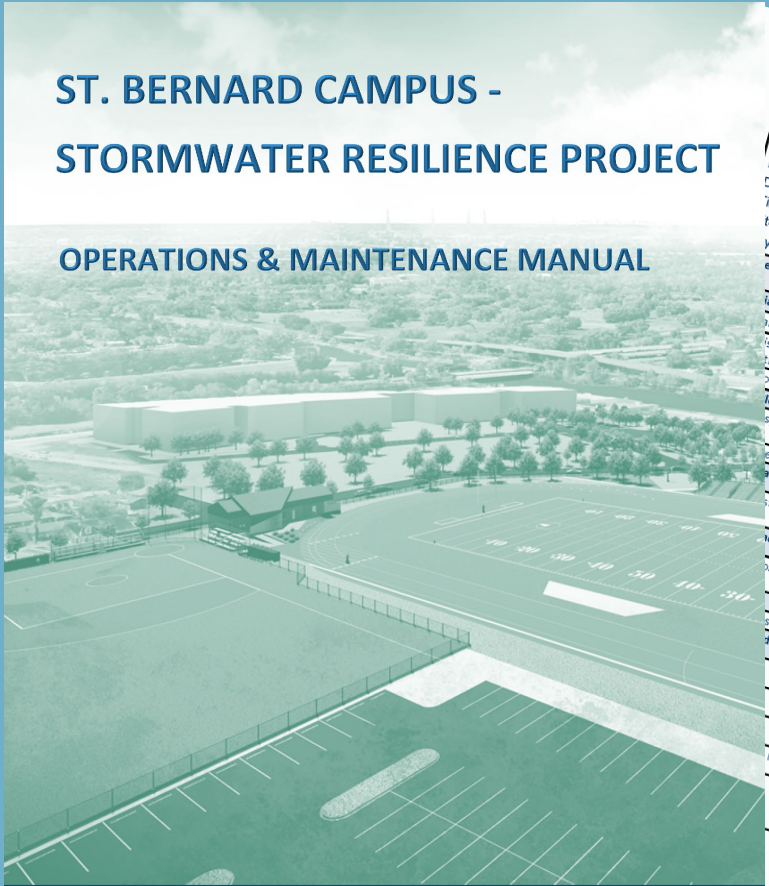
# Phase III

## Operation and Maintenance

- O&M Manual currently under review
- Contractor required to maintain GI for 36 months during “establishment period”
- Low maintenance bioswale plant palette
- Park areas will be maintained by NORDC

### ST. BERNARD CAMPUS - STORMWATER RESILIENCE PROJECT

#### OPERATIONS & MAINTENANCE MANUAL



**City of New Orleans**  
Mayor LaToya Cantrell

**GENTILLY Resilience DISTRICT**

**Stantec**

#### CHECKLIST FOR INSPECTION OF BIORETENTION SYSTEM / TREE FILTERS

Location: \_\_\_\_\_  
Inspector: \_\_\_\_\_  
Date: \_\_\_\_\_  
Time: \_\_\_\_\_  
Site Conditions: \_\_\_\_\_  
Days Since Last Rain Event: \_\_\_\_\_

Inspection Items	Satisfactory (S) or Unsatisfactory (U)	Comments/Corrective Action
Initial Inspection After Planting and Mulching	S U	
Plants are stable, roots not exposed	S U	
Plants are at design level, no evidence of differential flow/showing	S U	
Drainage outlet/bypass are functional	S U	
Cleanup (1 time/year minimum, Spring/Fall)	S U	
Debris and dead vegetation removed from vegetation	S U	
Water (1 time/year and/or after large storm events)	S U	
Standing water after 24-48 hours	S U	
Condition and Coverage	S U	
Surface on good with good coverage	S U	
Issues not previously covered.	S U	
Inspected	S U	
Due Date		
Inspector Signature		
Date		

Last Revised 02/2017