

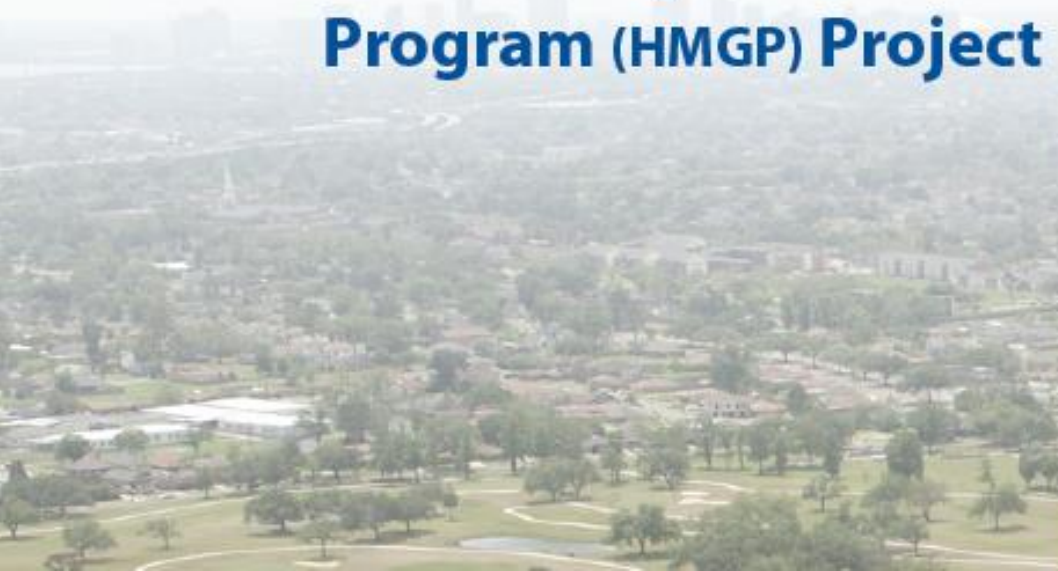


# Resilience Design Review Committee Follow-Up

Jessica L. Watts, P.E., CFM, D.WRE  
Water Resources Engineer  
CDM Smith

June 30, 2016

## Pontilly Stormwater Hazard Mitigation Grant Program (HMGP) Project





# Pontilly

- Neighborhoods of Pontchartrain Park and Gentilly Woods
  - 855 Acres
  - 2,400 Lots
  - Southern University of New Orleans
  - N.O. Baptist Theological Seminary
  - Pontchartrain Park Golf Course



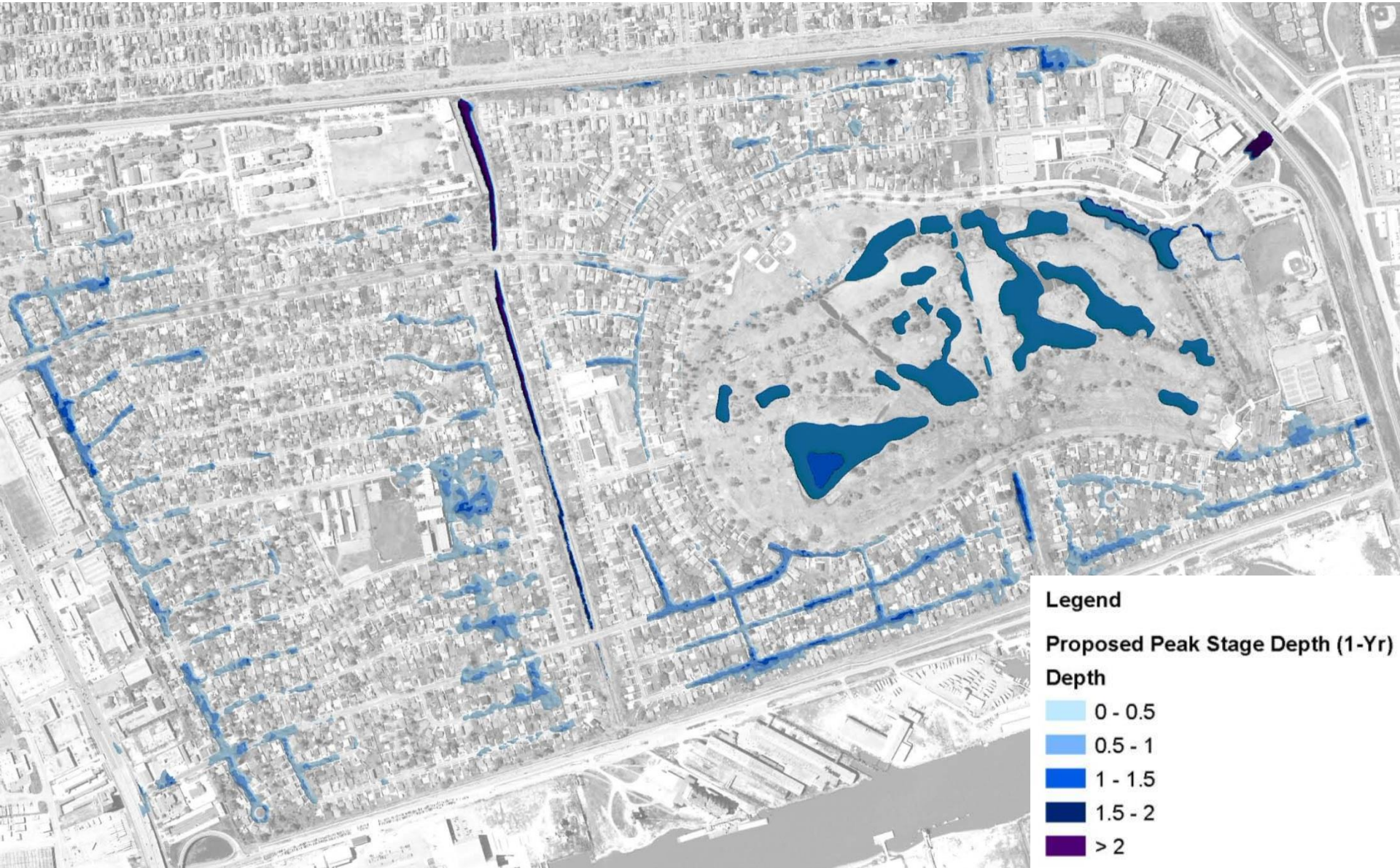


# Existing Peak Depth 1-Year Design Storm





# Proposed Peak Depth 1-Year Design Storm

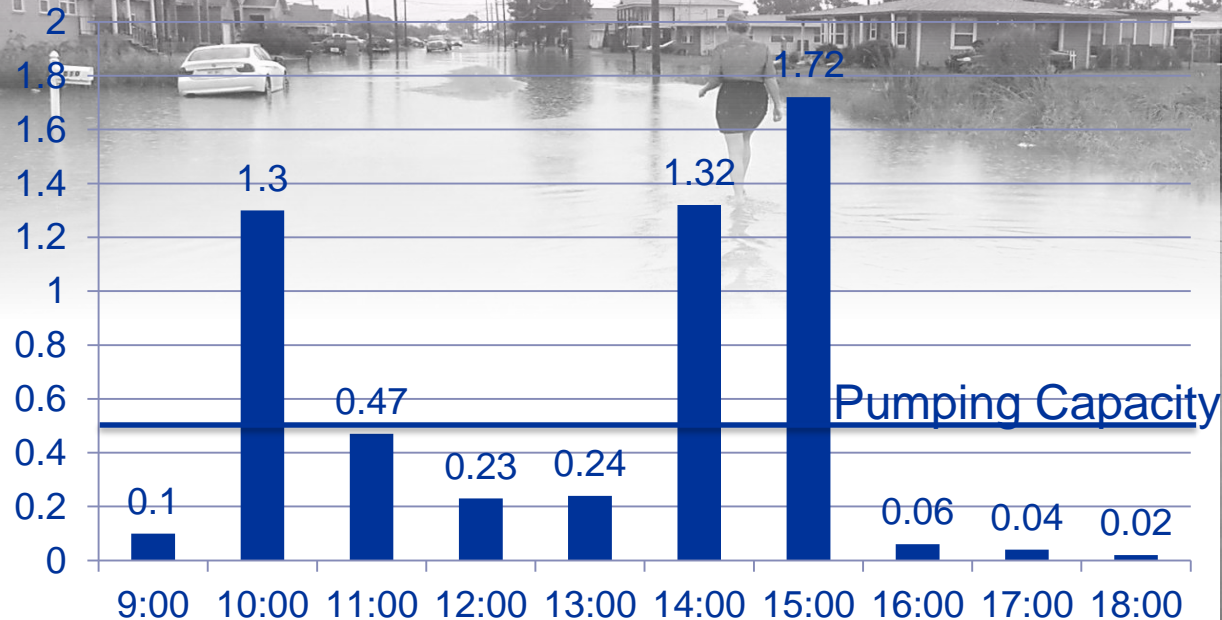


# Flooding

NOAA, Atlas 14, Volume 9

2-Yr, 2-Hr      5-Yr, 6-Hr

2.93 Inches    4.94 Inches



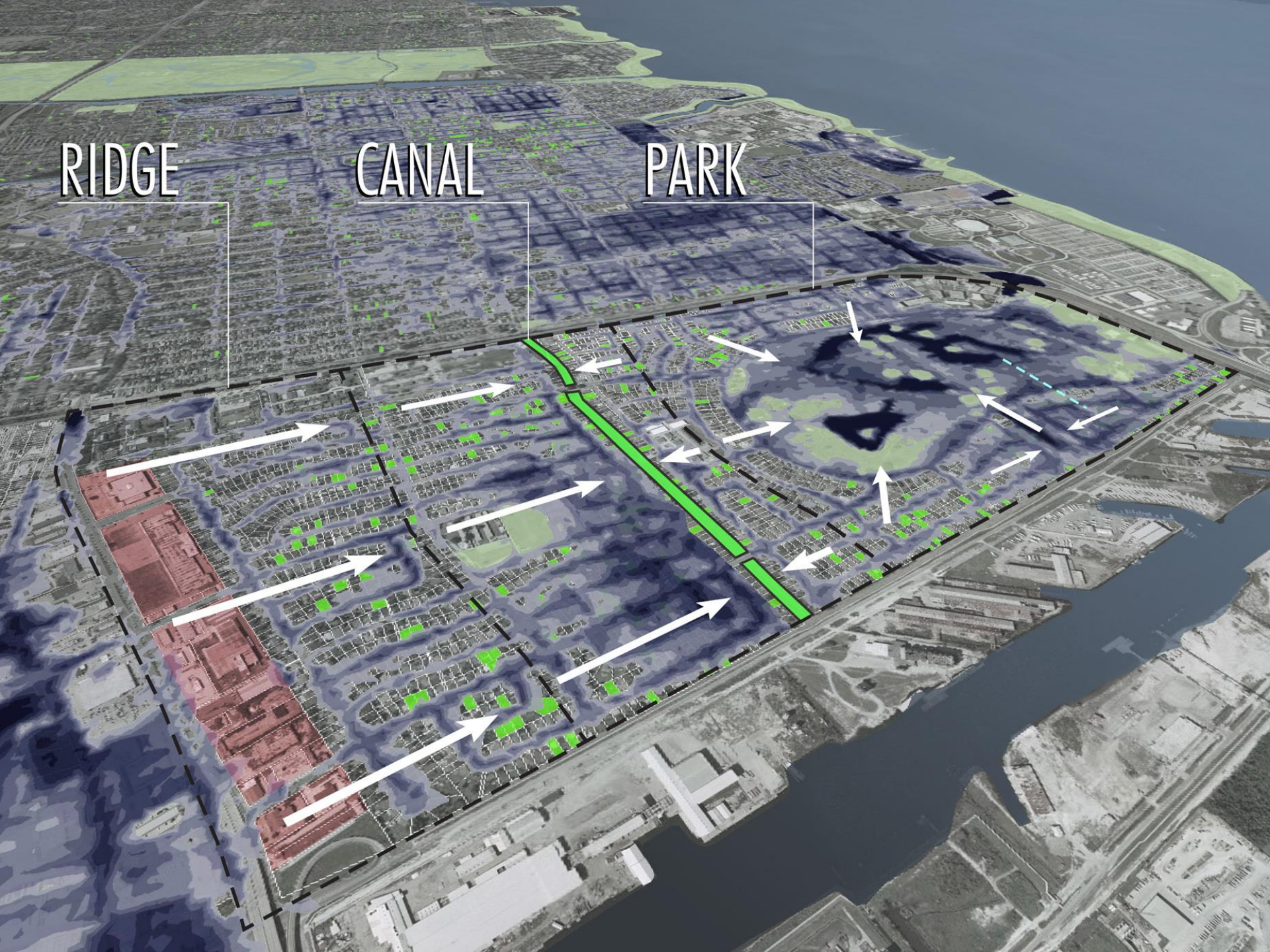
Pontchartrain Park Flooding, July 2012



RIDGE

CANAL

PARK

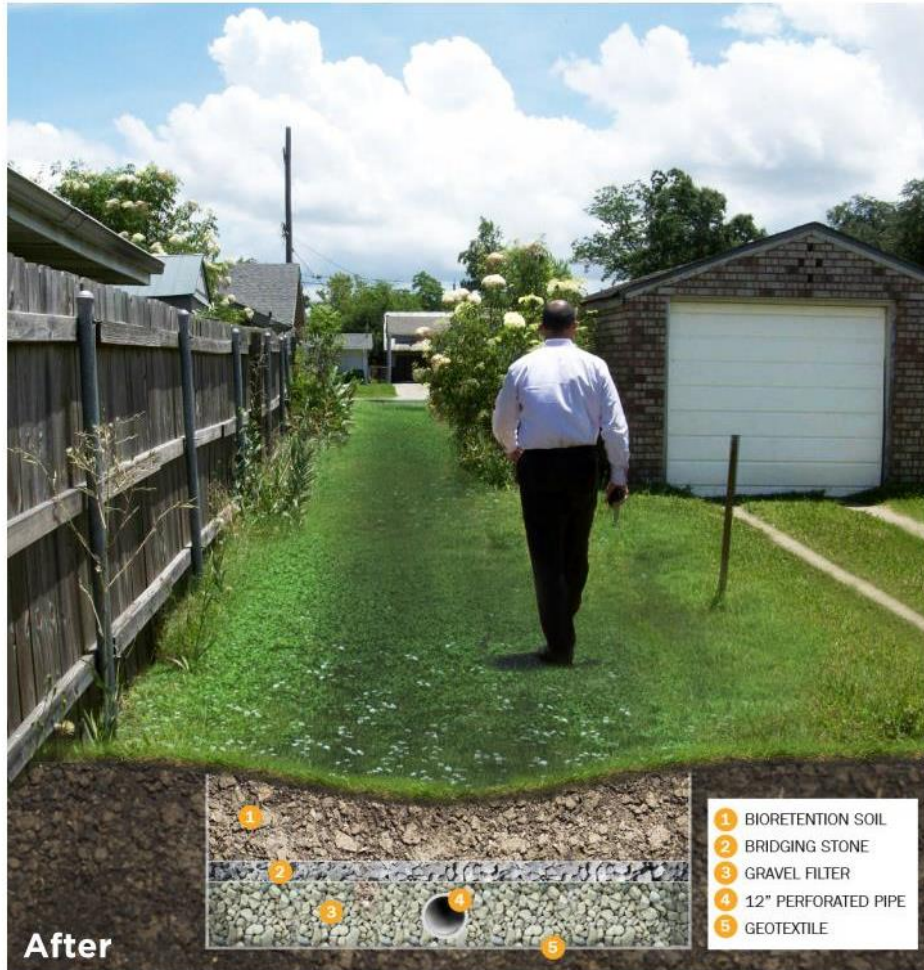




## Projects to slow and store stormwater



# Green Alleyway



- Add concrete mow strips to the green alleyways along fences
- Make permeable paving and permeable pavers alternate bids to the grass for the green alleyways to allow for ADA compliance

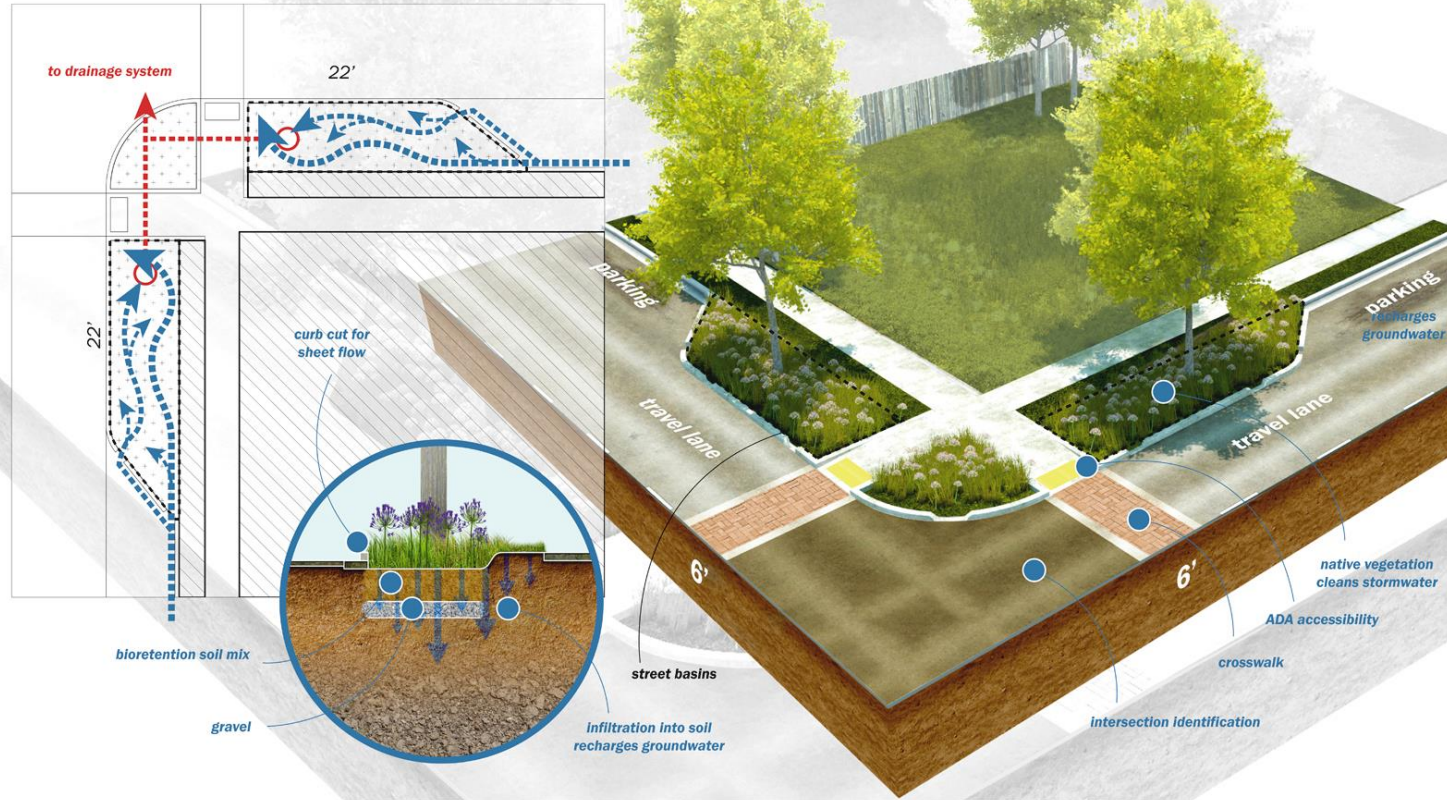


# Street Basin

## BEST MANAGEMENT PRACTICES

### CORNER STREET BASIN

Approx. 450 sqft.

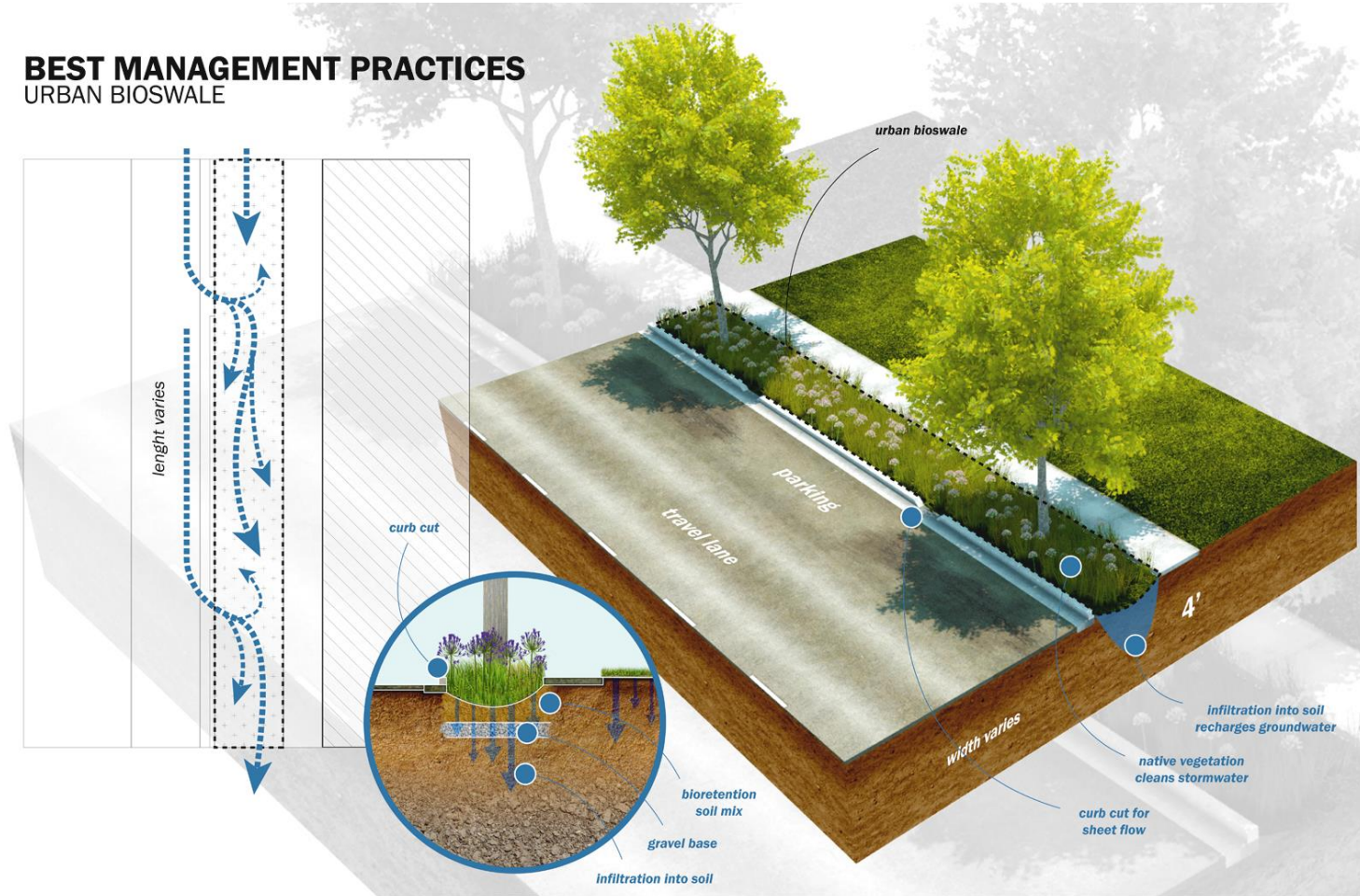


- Verify where the traffic signs are to be located
- Verify that there are no conflicts between the designed interventions and the recently revised bus route



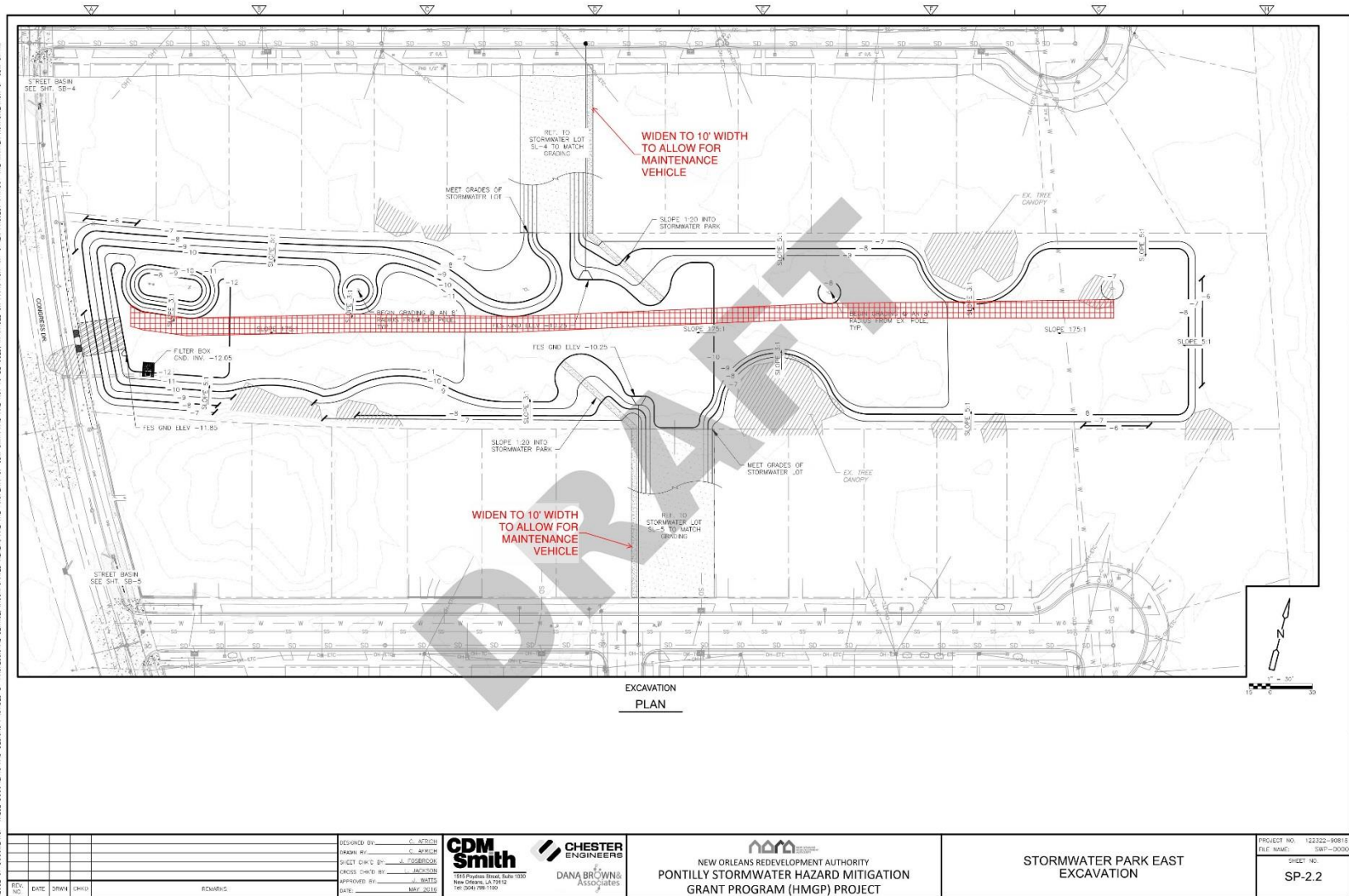
# Urban Bioswale

## BEST MANAGEMENT PRACTICES URBAN BIOSWALE



- Make driveway aprons regular concrete
- Verify where the traffic signs are to be located
- Verify that there are no conflicts between the designed interventions and the recently revised bus route



[illegible]

- Maintain the drive-able ROW for Entergy to service utility poles
- Verify the location of underground utilities in the Stormwater Parks



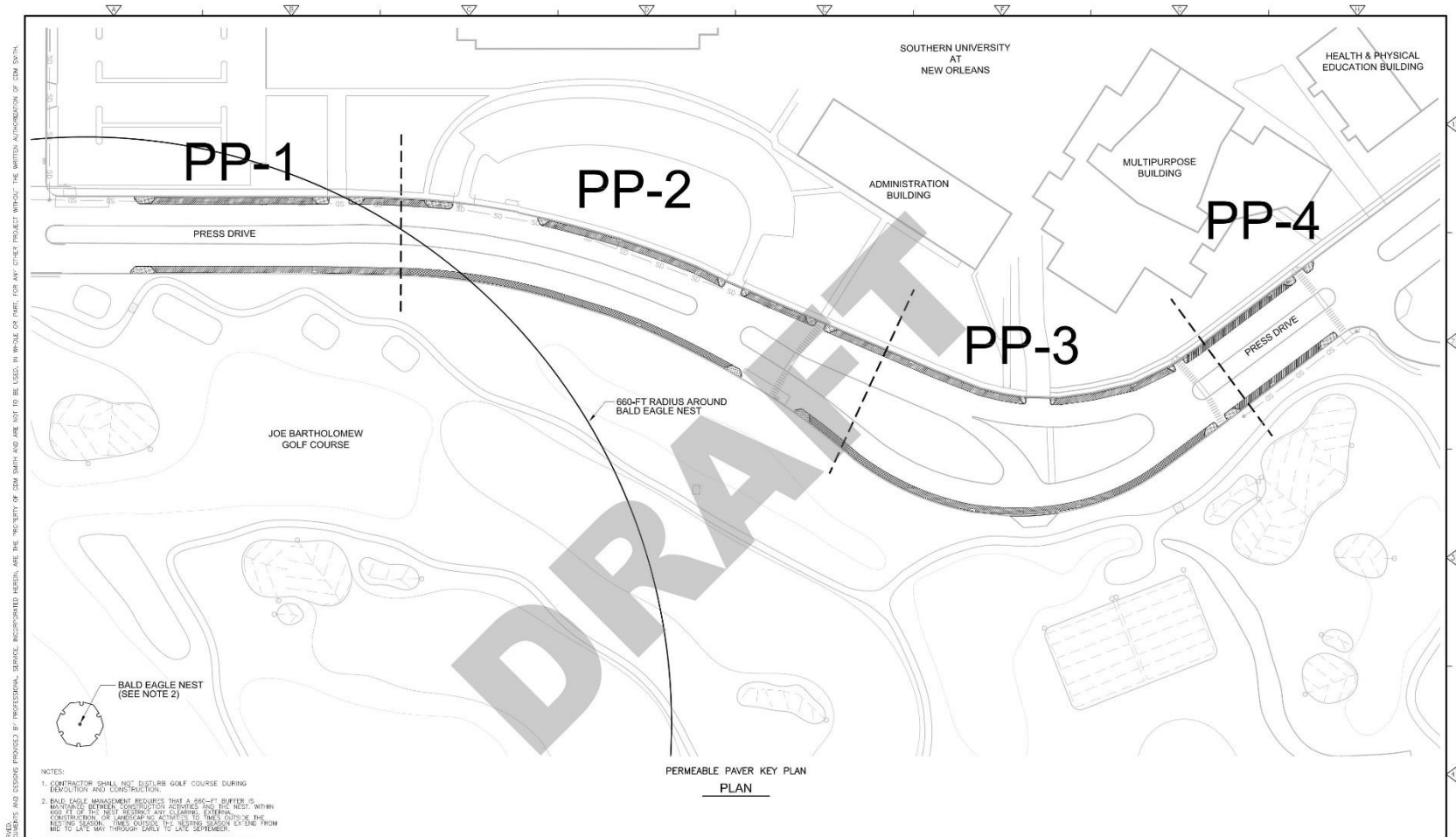
# Planting & Maintenance



- Include an establishment period and maintenance regime during that period
- Include in the bid that it is the Contractor's obligation to maintain plantings and other features throughout the construction period within the contract term
- Include an extended warranty of the plantings in the bid documents



# Additional Changes



- Include instructions in bid to coordinate permeable paver construction with SUNO which is building several new facilities
- ECO Services, contractors for PaveDrain, had several suggestions to improve maintenance of their product - detail changes, SWPPP instructions, and some specification suggestions.

## Comments & Questions



Contact: David Lessinger  
[dalessinger@nola.gov](mailto:dalessinger@nola.gov)



Contact: Louis Jackson  
[jacksonll@cdmsmith.com](mailto:jacksonll@cdmsmith.com)



Contact: Dana Brown  
[dbrown@danabrownassociates.com](mailto:dbrown@danabrownassociates.com)



Contact: Mark Scally  
[mscally@chesterengineers.com](mailto:mscally@chesterengineers.com)