



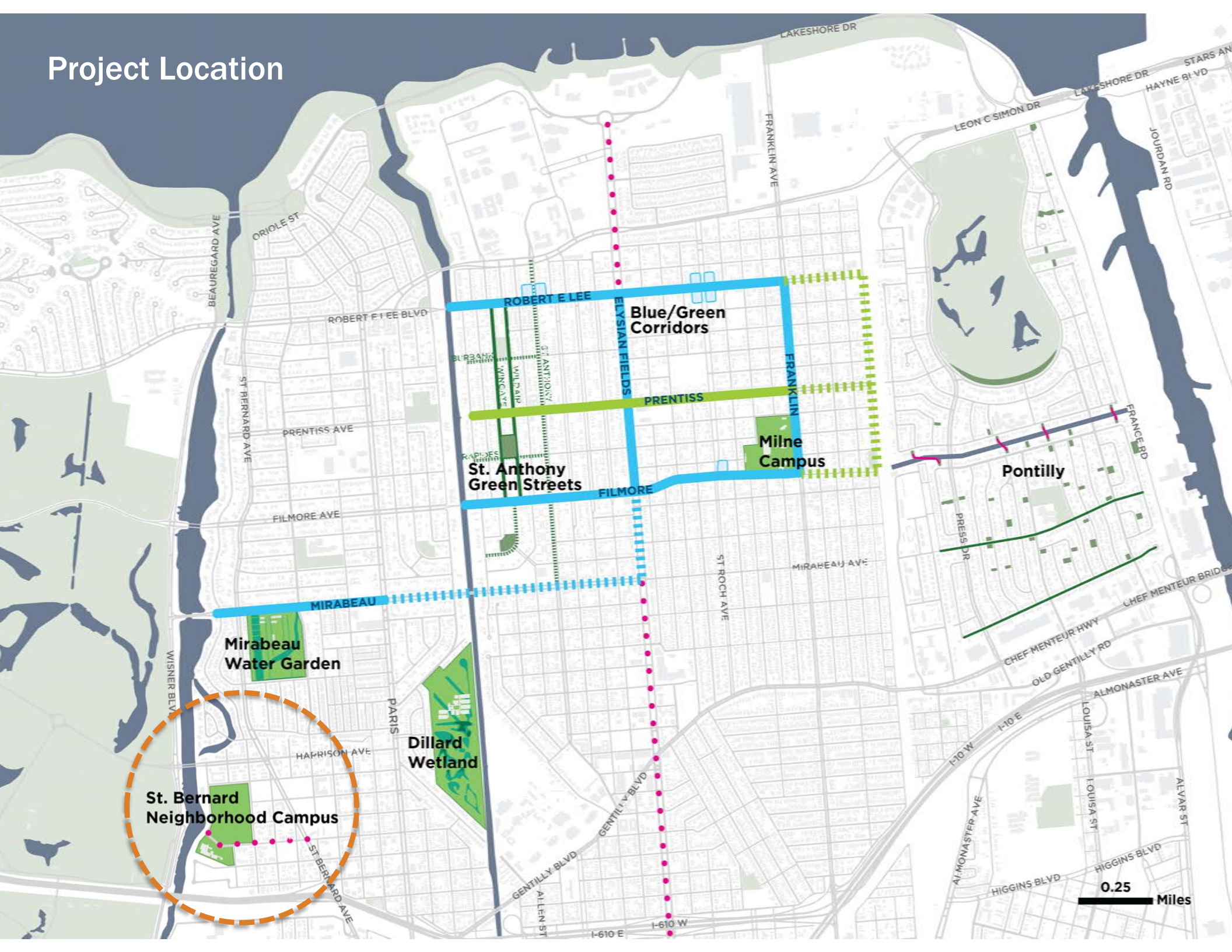
Resilience | Sustainability

St. Bernard Neighborhood Campus Scope

Presentation to the Resilience Design Review Committee
January 12, 2017

Jared Genova
Office of Resilience & Sustainability

Project Location



Project Area Characteristics

- Extensive subsidence damage
- Significant private disinvestment
- Largely residential
- Two key institutional anchors
- Adjacent to Bayou St. John and Columbia Parc



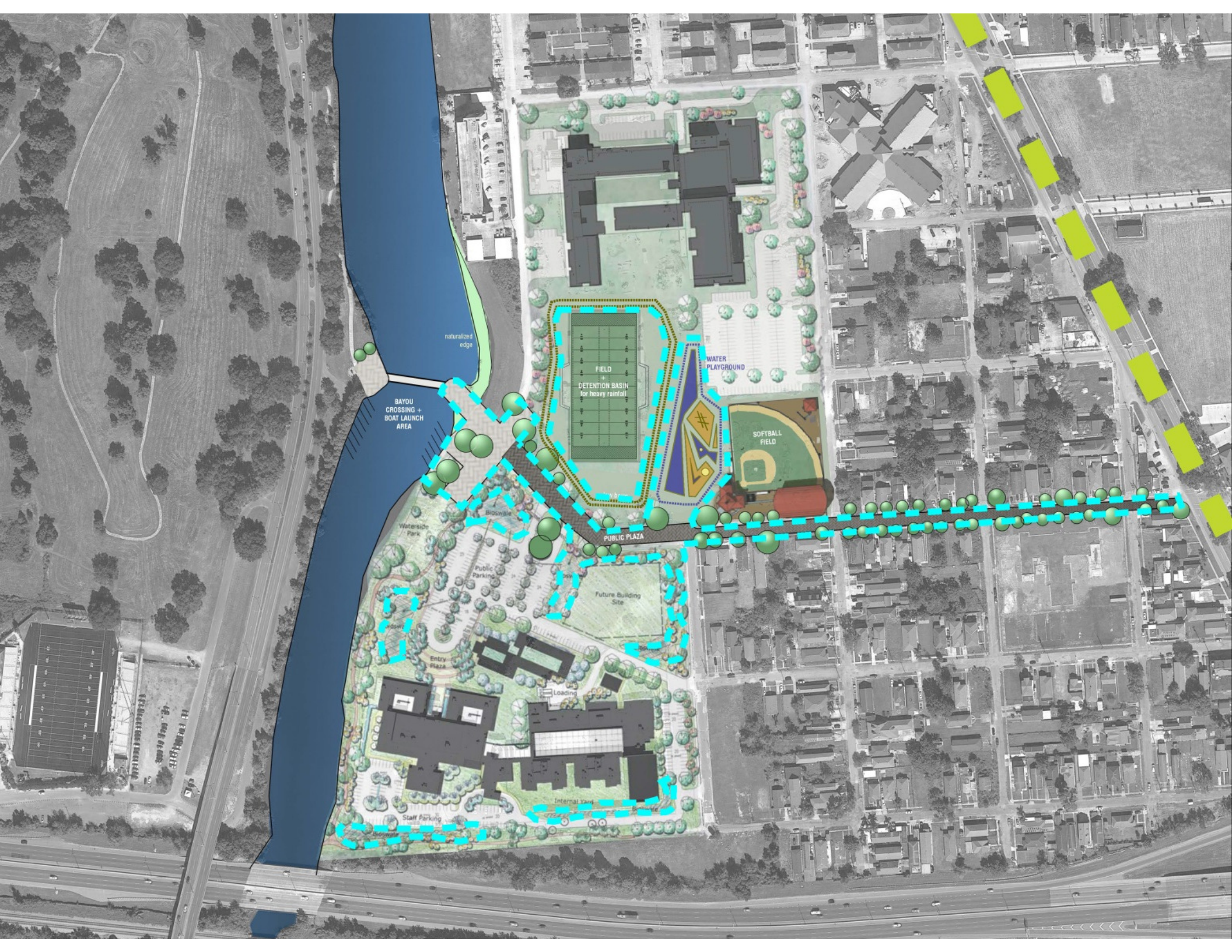
Mac 35

Columbia
Pare

Youth Study
Center

Project Goals

- **Water storage and management**
- **Subsidence reduction**
- **Addition and improvement of recreational space**
- **Increased access to green space**
- **Improved connections to Bayou St. John and Columbia Parc**



naturalized edge

BAYOU CROSSING +
BOAT LAUNCH
AREA

FIELD
+
DETENTION BASIN
for heavy rainfall

WATER
PLAYGROUND

SOFTBALL
FIELD

PUBLIC PLAZA

Waterside Park

Public Parking

Future Building Site

Entry Plaza

Loading

Staff Parking

Internal Yard

Project Scope

- **Construction Budget: \$7 Million**
- **Open spaces at McDonough 35 High School and adjacent former playground site**
- **Along key rights-of-way, including Milton from Davey to St. Bernard**
- **Green infrastructure interventions, recreational and educational features**
- **Amenities could include the following:**
 - Sports fields and related facilities, which could accommodate football, softball, and basketball
 - New building construction that could accommodate services to support a variety of recreation activities.
 - Water-focused educational playground facilities
 - Pedestrian bridge and water-focused recreational amenities for Bayou St. John
 - Pedestrian improvements with integrated green infrastructure measures along Milton Street.